

DESIGN



BRUUN RASMUSSEN
PART OF THE BONHAMS NETWORK

DESIGN



TRADITIONEL AUKTION 915

Torsdag 21. september kl. 16

EFTERSYN

Torsdag 14. september kl. 15 - 18

Fredag 15. september kl. 10 - 17

Lørdag 16. september kl. 10 - 16

Søndag 17. september kl. 11 - 16

eller efter aftale



BRUUN RASMUSSEN

KUNSTAUKTIONER

Bredgade 33 · 1260 København K · Tlf. +45 8818 1111
info@bruun-rasmussen.dk · bruun-rasmussen.com



BLIV KLOGERE PÅ KUNSTEN!

Paneldebat: Lørdag 16. september kl. 11-12

”Nyt lys på skagensmalerne”

Et stærkt hold af kunstfaglige profiler sætter nye perspektiver på kunstnerkolonien og dens betydning for dansk kunst. Omdrejningspunktet er Marie Krøyer og Anna Ancher.

Paneldeltagere:

Museumsdirektør Gertrud Oelsner fra Den Hirschsprungske Samling,
museumsinspektør Mette Bøgh Jensen fra Skagens Kunstmuseer,
kritiker og forfatter Lilian Munk Rösing
og kunstekspert Julie Arendse Voss fra Bruun Rasmussen.

Moderator:

Kunsthistoriker og kulturformidler Peter Kær.



Gallery Talk: Søndag 17. september kl. 14-14.30

”Gerda Wegener – Blikkets magt”

Kunstekspert Kathrine Eriksen fortæller om Gerda Wegeners kunst med udgangspunkt i en stor dansk privatsamling.

Den gribende fortælling om kunstnerægtesparret er efterhånden alment kendt, godt hjulpet på vej af Hollywood-filmen ”The Danish Girl”.

I sjældne tilfælde overgår virkeligheden dog fiktionen.

Den sande historie om Gerda Wegener og Einar Wegener/Lili Elbe handler ikke alene om kærlighed og kunst,

men også om styrke og mod, og deres skæbne foregriber mange moderne køns- og seksualpolitiske problemstillinger.

AUKTIONSKALENDER

Mandag	18. september - Fine Art	
	kl. 18 Malerier og tegninger	1 - 76
	kl. 20 Nordisk lys - kunstnerkolonien på Skagen	101 - 149
Tirsdag	19. september - Antiques	
	kl. 14 Kunsthåndværk, møbler og tæpper	150 - 251
Tirsdag	19. september - The Art of Luxury	
	kl. 16 Smykker	252 - 380
	Tasker	381 - 403
	kl. 19 Armbåndsure	404 - 446
Onsdag	20. september - Modern Art	
	kl. 18 Malerier og skulpturer	447 - 630
	Grafik	631 - 637
Torsdag	21. september - Design	
	kl. 16 Kunsthåndværk	638 - 684
	Møbler, lamper og tæpper	685 - 859
	kl. 20 Netauktion på bruun-rasmussen.dk - Bourgogne	

VIGTIG INFORMATION VEDR. BUDGIVNING!

Bonhams' internationale kunder kan også byde med på Bruun Rasmussens aktuelle Traditionelle Auktion via Bonhams' hjemmeside: bonhams.com

SIDSTE FRIST FOR AFHENTNING: ONSDAG DEN 4. OKTOBER

Genstande købt på denne auktion skal være betalt senest otte dage efter fakturadatoen og afhentet i Bredgade 33 senest onsdag den 4. oktober. I modsat fald bliver de transporteret til Bruun Rasmussens lager på Paul Bergsøes Vej 16 i Glostrup for købers regning og risiko, hvor de kan afhentes fra fredag den 6. oktober. Transporten koster 150 kr. pr. genstand inkl. moms, og opbevaringen koster 150 kr. pr. genstand pr. påbegyndt uge inkl. moms.

DESIGN



LIVE AUCTION 915

Thursday 21 September 4 pm

PREVIEW

Thursday 14 September 3 pm - 6 pm

Friday 15 September 10 am - 5 pm

Saturday 16 September 10 am - 4 pm

Sunday 17 September 11 am - 4 pm

or by appointment

 **BRUUN RASMUSSEN**
AUCTIONEERS

Bredgade 33 · DK-1260 Copenhagen K · Tel +45 8818 1111
info@bruun-rasmussen.dk · bruun-rasmussen.com





DAYS OF SALE

Monday	18 September - Fine Art		
	6 pm	Paintings and drawings	1 - 76
	8 pm	Northern Light - the Artists' Colony at Skagen	101 - 149
Tuesday	19 September - Antiques		
	2 pm	Decorative art, furniture and carpets	150 - 251
Tuesday	19 September - The Art of Luxury		
	4 pm	Jewellery	252 - 380
		Handbags	381 - 403
	7 pm	Wristwatches	404 - 446
Wednesday	20 September - Modern Art		
	6 pm	Paintings and sculptures	447 - 630
		Prints	631 - 637
Thursday	21 September - Design		
	4 pm	Decorative art	638 - 684
		Furniture, lamps and carpets	685 - 859
	8 pm	Online Auction at bruun-rasmussen.dk - Bourgogne	

IMPORTANT INFORMATION ABOUT BIDDING AT THE AUCTION

Bonhams' international customers can also bid at Bruun Rasmussen's current Live Auction via Bonhams' website: bonhams.com

DEADLINE FOR CLAIMING ITEMS: WEDNESDAY 4 OCTOBER

Items bought at this auction must be paid no later than eight days from the date of the invoice and claimed at Bredgade 33 by Wednesday 4 October at the latest. Otherwise, they will be moved to Bruun Rasmussen's storage facility at Paul Bergsøes Vej 16 in Glostrup at the buyer's expense and risk. Here, they can be picked up from Friday 6 October. This transportation will cost DKK 150 per item VAT included, and storage will cost DKK 150 per item per week VAT included.

Velkommen til den sidste auktion i Bredgade!

Hos Bruun Rasmussen går tradition og fornyelse hånd i hånd, og nu er det blevet tid til, at vi holder den allersidste auktion i Bredgade. Bygningen har dannet ramme om vores Traditionelle Auktioner siden grundlæggelsen af Bruun Rasmussen i 1948, og her i de historiske lokaler har nogle af de mest imponerende kunstværker og samlinger gennem tiden været under hammeren. Vi ved, at det bliver et vemodigt farvel for vores kære kunder, der er kommet i auktionshuset i årtier – og for os, der som en del af Bruun Rasmussens stab har haft fornøjelsen af at følge auktionerne på nært hold år efter år. For mange er lige netop dette sted i hjertet af København forbundet med eventyrlige rejser ind i kunstens verden under eftersynene og magien under de ofte heftige budkrige i den smukke, gamle auktionssal.

Vores virksomhed er midt i en rivende udvikling, og fornyelsen er en del af vores DNA. Som en vigtig spiller på det internationale auktionmarked er det afgørende for os at følge med tiden. Vi har længe været på udkig efter et nyt domicil, hvor vi kan samle vores auktioner, fagområder og ekspertise under ét og samme tag i københavnsområdet. Det har vi fundet på Nørgaardsvej 3 i Lyngby i en stor, moderne bygning med højt til loftet, der skaber det rette rum for udfoldelse og giver os mulighed for nye aktiviteter. Derfor har vi valgt at sige farvel til Bredgade, men vi tager naturligvis ånden og kulturen herfra med til Lyngby. Vores mål er til stadighed at være tilgængelige, udbyde den mest eftertragtede kunst, dele ud af vores viden og formidle de gode fortællinger, der er knyttet til de mange genstande, som vi hver dag har mellem hænderne. Vi ønsker at give enhver besøgende de bedste oplevelser i vores nye levende auktions- og kulturhus og glæder os til at åbne dørene i Lyngby i begyndelsen af oktober til spændende udstillinger, foredrag og et brag af en åbningsfest.

Forinden står en anden vigtig begivenhed for døren, nemlig den sidste auktion i Bredgade. Og hvad er mere naturligt end at tage afsked og hylde ånden i Bredgade med nogle af de kunstnere, der har været vores faste gæster gennem 75 år? Det gælder selvfølgelig de malere, der i slutningen af 1800-tallet samlede sig på Danmarks nordligste punkt og dannede den berømte kunstnerkoloni. Auktionens mange skagensværker er samlet i særkataloget "Nordisk lys – kunstnerkolonien på Skagen". I alt har vi til auktionen udgivet fem auktionskataloger, og i nærværende katalog findes et væld af designklassikere og det fineste kunsthåndværk af en lang række af 1900-tallets bedste formgivere fra både Danmark og udlandet. Med et af højdepunkterne udfolder der sig et stykke exceptionel kultur- og håndværkshistorie fra Georg Jensens Sølvsmide i form af en sjælden champagnekøler med lågknop af poleret rav, der har været ejet af den svenske baron Louis de Geer af Leufsta og siden er nedarvet i familien. Finn Juhl står bag et af auktionens andre højdepunkter med et unikasofabord fra 1948, der blev udført af snedkermester Niels Vodder på bestilling af juraprofessor Alf Ross og kan ses som et af de mest rendyrkede eksempler på Juhls bestræbelser på at udviske skellet mellem møblets funktionalitet og det skulpturelle udtryk (kat.nr. 645 og 829).

Vi glæder os til at se dig en sidste gang i Bredgade – og byde velkommen i Lyngby til oktober!

Jakob Dupont, administrerende direktør og Kasper Nielsen, vurderings- og salgsdirektør



Welcome to the Last Auction at Bredgade!

At Bruun Rasmussen, tradition and renewal go hand in hand, and the time has now come for us to hold the very last auction in the premises at Bredgade. The building has provided the setting for our Live Auctions since the founding of Bruun Rasmussen in 1948, and some of the most impressive works of art and collections have gone under the hammer in these historic premises over the years. We know that it will be a wistful farewell for our dear customers who have been coming to the auction house for decades – as it will be for those of us who have had the pleasure of following the auctions closely, year after year, as members of Bruun Rasmussen’s staff. For many people, this venue in the heart of Copenhagen will forever be associated with adventurous forays into the world of art during the previews and the magical atmosphere that arises during the often fierce bidding wars in the beautiful, old auction room.

Our company is in the midst of rapid development, and renewal is part of our DNA. As a major player in the international auction market, it is crucial for us to keep up with the times. We have long been on the lookout for new premises in the Copenhagen area where we can gather our auctions, specialist fields and expertise under one roof. And we have found this at Nørgaardsvej 3 in Lyngby, in a large, modern building with high ceilings, which gives us the space we need to spread our wings, and paves the way for new activities. So, we have chosen to say goodbye to Bredgade, but it goes without saying that we will be taking the spirit and culture with us to Lyngby. Our goal is to always be accessible, to offer the most sought-after art, to share our knowledge and to tell the great stories behind the multitude of items that we hold in our hands every day. It is our wish to give every visitor the best of experiences in our vibrant, new auction and culture house, and we look forward to opening the doors in Lyngby for exciting exhibitions, talks and a grand opening party at the beginning of October.

However, another important event is coming up before that – the last auction at Bredgade! And what better way to say goodbye and pay tribute to the spirit of Bredgade than with some of the artists who have been our regular guests for 75 years? We are, of course, referring to the painters who, at the end of the 19th century, settled at Denmark’s northernmost point and formed the famous artist colony. The many Skagen works up for auction are gathered in the special catalogue “Northern Light – The Artists’ Colony at Skagen”. We have published five auction catalogues for the auction, and in this one you will find a wealth of design classics and the finest decorative art by a long list of the top designers of the 20th century, from both Denmark and abroad. One of the highlights, an exceptional piece of craftsmanship and cultural history from ‘Georg Jensen Sølvsmiede’, is a rare champagne cooler with a lid adorned with a polished amber knob. Once owned by the Swedish baron Louis de Geer af Leufsta, it has since been passed down through the family. Finn Juhl is the man behind another of the auction highlights with a unique coffee table from 1948, made by cabinetmaker Niels Vodder. Commissioned by law professor Alf Ross, it can be seen as one of the most refined examples of Juhl’s endeavours to blur the distinction between the furniture’s functionality and its sculptural expression (cat. no. 645 and 829).

We look forward to seeing you at Bredgade one last time – and welcoming you to Lyngby in October!

Jakob Dupont, CEO and Kasper Nielsen, Director of Valuation and Sales



SPECIALISTS IN DECORATIVE ART AND DESIGN



*Head of Department of Modern
Decorative Art and Design*
Peter Kjelgaard Jensen
+45 8818 1191
pkj@bruun-rasmussen.dk



Design
Anna Berger Widenborg
+45 8818 1187
awi@bruun-rasmussen.dk



Design
Andreas Krabbe
+45 8818 1193
ank@bruun-rasmussen.dk



Design
Poul Svalgaard Henriksen
+45 8818 1132
psh@bruun-rasmussen.dk



Design
Anders Bodholt Askman
+45 8818 1198
aba@bruun-rasmussen.dk



Decorative Art
Amalie Hansen
+45 8818 1194
amh@bruun-rasmussen.dk



Design
Klara Johansdotter Hagberg
+45 8818 1236
kjh@bruun-rasmussen.dk



Paintings and Design
Peter Beck - Aarhus
+45 8818 1186
pb@bruun-rasmussen.dk



Design
Peter Tholstrup - Aarhus
+45 8818 1195
pt@bruun-rasmussen.dk



Director of Valuations and Sales
Kasper Nielsen
+45 8818 1121
kn@bruun-rasmussen.dk



Shipping
Tina Bavnbek Jepsen
+45 8818 1056
tbj@bruun-rasmussen.dk



Representative France + Belgium
Ditte Herborg Krogh
+33 6 6185 4564
dhk@bruun-rasmussen.dk



*Global Head of Modern Decorative Art and Design
- Bonhams / USA*
Benjamin Walker
+1 212 710 1306
benjamin.walker@bonhams.com

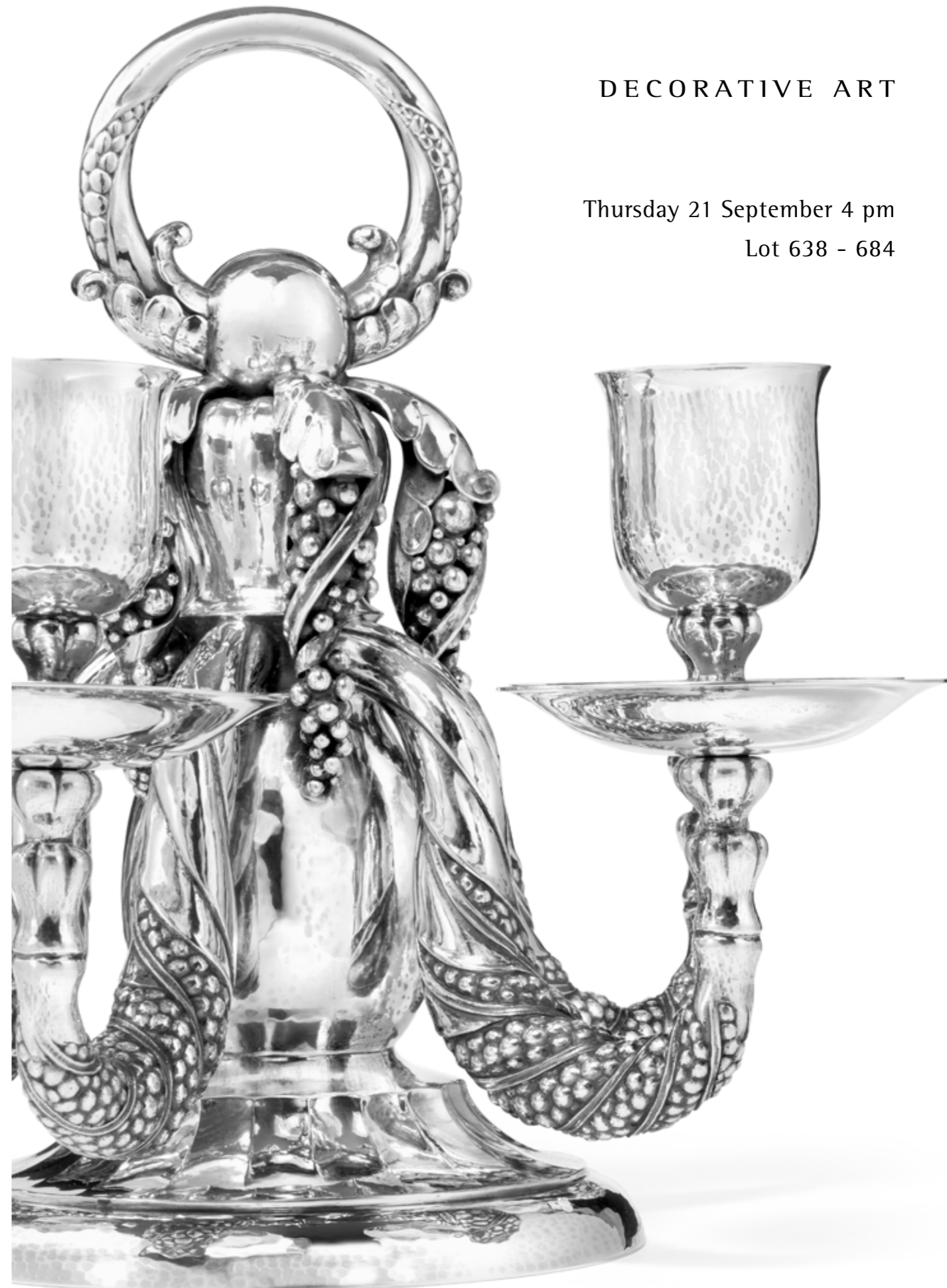


*International Specialist, Europe
- Bonhams / Netherlands*
Marcel Brouwer
+31 (0)6 547 05 086
marcel.brouwer@bonhams.com

DECORATIVE ART

Thursday 21 September 4 pm

Lot 638 - 684





638

638
GEORG JENSEN

b. Rådvaed 1866, d. Hellerup 1935

A large sterling silver grape tazza with hammered surface. Spiral fluted stem and circular foot. Georg Jensen 1925-1932. Design no. 264 A. Designed 1918. Weight 1254 g. H. 26.6-26.9 cm. Diam. 25.4 cm.

DKK 40,000-50,000 / € 5,350-6,700

639
GEORG JENSEN

b. Rådvaed 1866, d. Hellerup 1935

"Blossom". A sterling silver bread tray with hammered surface. Openwork handles with stylized flower and foliage decor. Georg Jensen 1945-1977. Design no. 2 D. Weight 638 g. H. max. 3.5 cm. W. max. 16.2 cm. L. 33.5 cm.

DKK 20,000-25,000 / € 2,700-3,350



639



640

640
GEORG JENSEN

b. Rådvaed 1866, d. Hellerup 1935

A pair of circular sterling silver serving bowls, each with removable divider. Foot rim and upper rim with stylized relief decor. Georg Jensen, approx. 1930s. Design no. 323 E and 323 G. Total weight 1341 g. H. 6.7 cm. Diam. 22.5 cm. (2)

DKK 25,000 / € 3,350

641
GEORG JENSEN

b. Rådvaed 1866, d. Hellerup 1935

"Blossom". A circular sterling silver vegetable dish and cover with lightly hammered surface. Openwork finial and handles with flowers and foliage. Georg Jensen after 1945. Design no. 2 A. Weight 1476 g. H. 12.5 cm. L. 31.3 cm.

Literature: David A. Taylor & Jason W. Laskey: "Georg Jensen Holloware - The Silver Fund Collection", ill. p. 41.

DKK 25,000-30,000 / € 3,350-4,050



641



642

642
JOHAN ROHDE

b. Randers 1856, d. Hellerup 1935

"Acorn"/"Kongemønster". A set of 12 sterling silver charger plates with hammered surface. Georg Jensen 1945-1977. Design no. 642 A. Designed 1931. Total weight 8353 g. Diam. 28 cm. (12)

Literature: David A. Taylor & Jason W. Laskey: "Georg Jensen Holloware - The Silver Fund Collection", ill. p. 230. DKK 50,000 / € 6,700



643

643
JOHAN ROHDE

b. Randers 1856, d. Hellerup 1935

A pair of angular sterling silver candlesticks with lightly hammered surface. Georg Jensen 1945-1977. Design no. 286. Designed 1919. Total weight 1270 g. H. 23 cm. The inner diam. of candle holder approx. 2.1 cm. (2)

Literature: Janet Drucker: "Georg Jensen - A Tradition of Splendid silver", ill. p. 235. DKK 50,000 / € 6,700



644

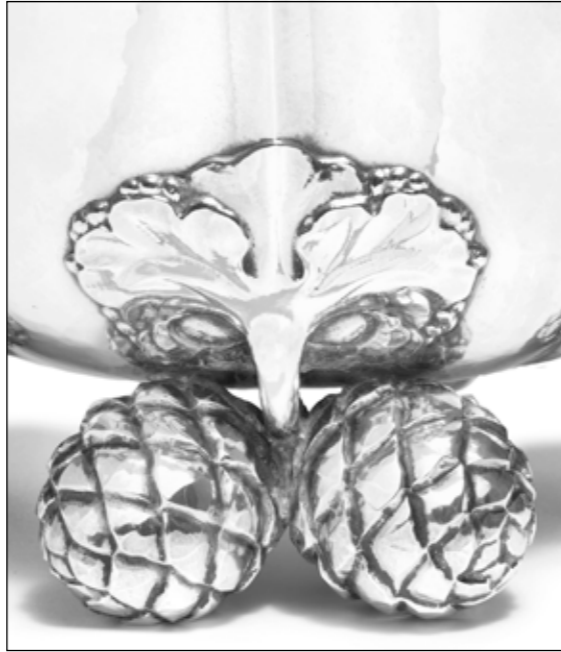
644
JOHAN ROHDE

b. Randers 1856, d. Hellerup 1935

"Acorn"/"Kongemønster". A large sterling silver cutlery set. Georg Jensen 1933-1944, 1945-1951 and after 1945. Designed 1915. Weight excluding pieces with steel 8750 g. (251)

Comprising:

- | | |
|--|--|
| 13 lobster forks | 3 coffee spoons |
| 15 oyster forks | 5 butter knives |
| 15 fish knives | 1 child's spoon L. 15.7 cm. |
| 14 fish forks | 1 child's fork L. 14.3 cm. |
| 12 large dinner knives with short handle L. 25.2 cm. | 1 ice tongs |
| 3 dinner knives with short handle L. 22.7 cm. | 1 bottle opener with long handle |
| 16 large dinner forks L. 18.7 cm. | 1 nut cracker |
| 14 large dinner spoons L. 20.2 cm. | 9 salt spoons |
| 3 dinner spoons L. 19 cm. | 1 salad set L. 21.7 cm. |
| 3 soup spoons L. 16 cm. | 1 large server L. 26.5 cm. |
| 1 salad fork L. 16.7 cm. | 1 berry spoon L. 22.7 cm. |
| 16 luncheon knives with short handle L. 20.6 cm. | 1 vegetable fork L. 24 cm. |
| 16 luncheon forks | 1 vegetable spoon L. 24.2 cm. |
| 15 dessert spoons | 1 potato spoon L. 20 cm. |
| 7 bouillon spoons L. 13.2 cm. | 2 sauce ladles with curved handle |
| 15 fruit knives | 1 steak fork L. 20 cm. |
| 15 pastry forks | 1 carving set L. 34.5 and 31 cm. |
| 6 iced tea spoons | 1 sharpening steel L. 32.5 cm. |
| 18 teaspoons | 1 paper knife L. 19.8 cm. DKK 60,000 / € 8,050 |



645
GEORG JENSEN

b. Rådvaad 1866, d. Hellerup 1935

A rare silver champagne cooler and cover with hammered surface. Lobed body on four double pinecone feet and foliage. Cover with polished amber finial surrounded by openwork grape and foliage decor. The inside with silver plated metal liner and openwork silver collar. Georg Jensen 1915-1925, with Swedish import marks. Design no. 87. Designed 1915. Weight excluding liner 3127 g. H. 37 cm. Diam. 27.7 cm.

Provenance: The champagne cooler was made by special order for the current owner's great-grandfather, the Swedish baron Louis de Geer of Leufsta (b. 1866, d. 1925). Thence by descent in the family to the current owner.

Literature: Janet Drucker: "Georg Jensen - A Tradition of Splendid Silver", ill. pp. 59 and 192. DKK 400,000-600,000 / € 53,500-80,500



645



646

646
GEORG JENSEN

b. Rådvaad 1866, d. Hellerup 1935

Eight small sterling silver goblets with hammered surface. Stem with stylized relief decor. Georg Jensen 1908-1914 and 1915-1927. Design no. 520 A. Total weight 751 g. H. 10 cm. Diam. max. 5.3-5.5 cm. (8) *DKK 20,000 / € 2,700*

647
GEORG JENSEN

b. Rådvaad 1866, d. Hellerup 1935

A large, oval sterling silver tray. Border with relief decor. Georg Jensen 1933-1944. Weight 2016 g. H. 2.3 cm. W. 40 cm. L. 57 cm.

DKK 25,000-30,000 / € 3,350-4,050



647

648
GEORG JENSEN

b. Rådvaad 1866, d. Hellerup 1935

"Louvre". A sterling silver tazza with hammered surface. Openwork stem with foliage and beads. Georg Jensen 1945-1977. Design no. 19 A. Designed 1912. Weight 848 g. H. 17.3 cm. Diam. 20 cm.

Literature: Thomas C. Thulstrup: "Georg Jensen - Sølv & Design", ill. p. 33.

Literature: David A. Taylor, Jason W. Laskey: "Georg Jensen Holloware - The Silver Fund Collection", ill. p. 59.

DKK 18,000-20,000 / € 2,400-2,700



648

649
HARALD NIELSEN

b. Baarse 1892, d. 1977

A circular sterling silver fruit dish with lightly hammered surface and two scroll handles. Georg Jensen 1945-1977. Design no. 752 B. Designed 1935. Weight 1926 g. H. max. 9 cm. Diam. 30.1 cm. L. 34.5 cm.

Literature: Janet Drucker: "Georg Jensen - A Tradition of Splendid Silver", ill. p. 214.

Literature: Illustrated, "Harald Nielsen - Et tilbageblik på en kunstners arbejde ved 60-årsdagen", ill. pp. 24-25.

DKK 50,000 / € 6,700



649



650

650
MANUEL SJØDAHL ANDERSEN

b. 1962

"Brexit bowl". A sculptural sterling silver dish with hammered surface. Arched center with pedestal holding an English bulldog. Made and marked by Manuel Sjødahl Andersen. Made 2018. Weight 3279 g. H. 34 cm. Diam. max. 45.5 cm.

The bowl illustrates the UK's withdrawal from the EU. The English bulldog being on its own, placed on a pedestal - as if on an island - symbolizes the fact that the UK has chosen to isolate itself from the community that is the European Union.

DKK 40,000–50,000 / € 5,350–6,700



651

651
HENNING KOPPEL

b. Copenhagen 1918, d. s.p. 1981

"Caravel". A large, rarely offered sterling silver cutlery set. Georg Jensen after 1957. Designed 1957. Weight excluding pieces with steel and ebonite 5868 g. (176)

Comprising:

18 dinner knives L. 21.7 cm.

18 dinner spoons L. 19.3 cm.

18 dinner forks L. 18.7 cm.

18 luncheon knives L. 19.3 cm.

18 luncheon forks L. 17 cm.

18 pastry forks L. 14.3 cm.

18 soup spoons L. 16 cm.

18 fruit knives L. 17 cm.

17 coffee spoons L. 10.5 cm.

6 butter knives L. 15.5 cm.

4 dessert spoons L. 17,4 cm.

1 server L. 26 cm.

1 salad set with black ebonite L. resp. 29 and 29.3 cm.

2 sauce ladles L. 18.5 cm.

1 steak fork L. 21 cm.

DKK 100,000 / € 13,500



652

652
HENNING KOPPEL

b. Copenhagen 1918, d. s.p. 1981

A sculptural sterling silver dish. Georg Jensen 1948-1977. Design no. 980 A. Designed 1948. Weight 3097 g. H. max. 16 cm. Diam. max. 39.5 cm. Acquired in 1965.

This model received the gold medal at the 1951 Milan Triennale.

Literature: Niels-Jørgen Kaiser: "Henning Koppels Verden", ill. p. 65.

Literature: Viggo Sten Møller: "Henning Koppel", ill. p. 11.

Literature: David A. Taylor & Jason W. Laskey: "Georg Jensen Holloware - The Silver Fund Collection", ill. p. 295. DKK 60,000-75,000 / € 8,050-10,000



653

653
HENNING KOPPEL

b. Copenhagen 1918, d. s.p. 1981

Sterling silver tea and coffee set. Comprising a teapot, coffee pot, creamer, sugar bowl and a large oval tray. Tea and coffee pot with Guaiacum wood handle. Georg Jensen 1952-1977 and after 1977, with date letter S11=2016 (tray). Design no. 1017 and 1017 A. Designed 1952. Total weight 4774 g. H. 4.3-16 cm. Tray: H. 2 cm. W. 45 cm. Inner diam. 40 cm. L. 52 cm. (5)

Literature: David A. Taylor & Jason W. Laskey: "Georg Jensen Holloware - The Silver Fund Collection", ill. p. 304.

Literature: Janet Drucker: "Georg Jensen - A Tradition of Splendid Silver", ill. p. 230. DKK 150,000-175,000 / € 20,000-23,500



654

654
KAY FISKER

b. Frederiksberg 1893, d. København 1965

A large sterling silver candlestick. Made and marked by A. Michelsen anno 1941. With maker's anniversary mark 1841-1941. Weight 494 g. H. max. 8 cm. Diam. max. 18.2 cm. The inner diam. of candle holder 3.5 cm.

Provenance: Private collection, Denmark.

DKK 8,000–10,000 / € 1,050–1,350



655

655
KAY BOJESEN

b. Copenhagen 1886, d. Gentofte 1958

Two sterling silver casseroles with respectively Brazilian rosewood and dark wood double-handle. Made and marked by Kay Bojesen, Denmark. Total weight 1974 g. H. resp. 8.6 and 9 cm. L. resp. 33 and 26.3 cm. (2)

Provenance: Private collection, Denmark. The large casserole is acquired at Kay Bojesen's shop in Bredgade, 1972.

DKK 20,000–25,000 / € 2,700–3,350



656

656
SIGVARD BERNADOTTE

b. 1907, d. 2002

"Bernadotte". Sterling silver cutlery set. Georg Jensen 1945-1951 and after 1945. Designed 1939.

Weight excluding pieces with steel 3713 g. (85)

Comprising:

12 dinner knives with long handle L. 22.3 cm.

12 dinner forks L. 19.3 cm.

12 dinner spoons L. 19.3 cm.

1 soup spoon L. 16.2 cm.

12 luncheon knives with long handle L. 19.5 cm.

12 luncheon forks L. 17.9 cm.

12 dessert spoons L. 18.5 cm.

4 long cold cut forks L. 15 cm.

1 herring fork

1 bottle opener with long handle

1 serving spoon L. 23.9 cm.

1 serving spoon L. 20.7 cm.

1 small serving spoon L. 18.2 cm.

2 sauce ladles

1 steak fork L. 24.8 cm.

DKK 30,000 / € 4,050



657

657

JOHAN ROHDE

b. Randers 1856, d. Hellerup 1935

Sterling silver tea and coffee set with hammered surface. Comprising a teapot, coffee pot, creamer, lidded sugar bowl and an oval tray. Partly carved ebony handles. Georg Jensen 1945-1977. Design no. 45 A, 45 C and 251 B. Total weight 3725 g. H. 11.3-24.5 cm. Tray: H. max. 3.5 cm. W. 35.2 cm. L. 51.5 cm. (5)

Literature: Janet Drucker: "Georg Jensen - A Tradition of Splendid Silver", ill. p. 223.

Literature: David A. Taylor & Jason W. Laskey: "Georg Jensen Holloware - The Silver Fund Collection", ill. p. 68.

DKK 50,000 / € 6,700



658

658

GEORG JENSEN

b. Rådvaad 1866, d. Hellerup 1935

A five-light sterling silver candelabrum with hammered surface. Enlaid with foliage and relief grape decor. Georg Jensen 1933-1944. Design no. 383 A. Designed 1921. Weight 3066 g. H. max. 27 cm. Diam. max. 32 cm. The inner diam. of candle holders 2.5 cm.

The model is in the collection of the Museum of Modern Art in New York.

Literature: David A. Taylor & Jason W. Laskey: "Georg Jensen Holloware - The Silver Fund Collection", ill. p. 163. DKK 180,000-200,000 / € 24,000-27,000



659

659
GEORG JENSEN

b. Rådvaed 1866, d. Hellerup 1935

A large sterling silver grape tazza with hammered surface. Spiral fluted stem and circular foot. Georg Jensen 1945-1977. Design no. 264 A. Designed 1918. Weight 1308 g. H. 26.7-26.9 cm. Diam. 25.5 cm.

DKK 40,000-50,000 / € 5,350-6,700

660
GEORG JENSEN

b. Rådvaed 1866, d. Hellerup 1935

An oval sterling silver tray with hammered surface and beaded rim. Georg Jensen 1925-1932. Design no. 210 V. Weight 963 g. H. 1.5 cm. W. 25.5 cm. L. 40 cm.

DKK 15,000 / € 2,000



660



661

661
GEORG JENSEN

b. Rådvaed 1866, d. Hellerup 1935

A pair of large sterling silver grape candlesticks. Spiral fluted stem and circular foot. Georg Jensen 1945-1977. Design no. 263 B. Total weight 1714 g. H. 20.4-20.7 cm. The inner diam. of candle holders 2.5 cm. (2)

DKK 50,000 / € 6,700

662
GEORG JENSEN

b. Rådvaed 1866, d. Hellerup 1935

An oval sterling silver fruit bowl with hammered surface and four hinged grape-handles. Georg Jensen 1945-1977. Design no. 296 A. Designed 1919. Weight 1933 g. H. 12.6-12.9 cm. W. max. 28 cm. L. max. 36 cm.

DKK 60,000-75,000 / € 8,050-10,000



662



663

663
GEORG JENSEN

b. Rådvaad 1866, d. Hellerup 1935

"Kugle"/"Beaded". Silver and sterling silver cutlery set. Georg Jensen 1916-1930, 1925-1932, 1933-1944 and after 1945. Designed 1916. Weight excluding pieces with steel 3715 g. (100)

Comprising:

- 10 large dinner knives with short handle L. 24.8 cm.
- 12 large dinner forks L. 19.5 cm.
- 12 large dinner spoons L. 20.4 cm.
- 11 dessert spoons with pearshaped bowl L. 17.7 cm.
- 12 fruit knives with silver blade
- 9 pastry forks
- 12 coffee spoons
- 2 long cold cut forks L. 18 cm.
- 6 short cold cut forks L. 13.7 cm.
- 1 sardine fork

- 1 small salad set L. 15.7 cm.
- 1 herring fork
- 1 bottle opener with short handle
- 1 soup ladle L. 35 cm.
- 1 tomato knife
- 1 cheese knife
- 2 marmalade spoons L. 14.5 cm.
- 1 server with incised motif L. 21 cm.
- 2 servers L. 18.7 cm.
- 1 berry spoon L. 23 cm.
- 1 salt spoon

DKK 25,000 / € 3,350

664
GEORG JENSEN

b. Rådvaad 1866, d. Hellerup 1935

Sterling silver tea- and coffee set with hammered surface and beaded rim. Comprising a tea kettle on stand with a burner, coffeepot, teapot, creamer, sugar bowl with handles, rock candy bowl, small dish with handles and a large oval tray. Finials with relief grape decor and ebony handles. Georg Jensen 1933-1944. Design no. 32, 32 A, 32 C, 32 D and 158 A. Total weight excluding tea kettle's stand 5667 g. H. 3.7-24.5 cm. Tray: H. incl. handle 3.5 cm. W. 40.7 cm. L. 67 cm. (8)

DKK 125,000-175,000 / € 17,000-23,500



664



665

**665
HARALD NIELSEN**

b. Barse 1892, d. 1977

An oval sterling silver fruit dish. Two bead and foliage handles. Georg Jensen 1945-1977. Design no. 622 B. Weight 1604 g. H. 14 cm. W. 22.9 cm. L. 41 cm. DKK 30,000-40,000 / € 4,050-5,350

**666
GEORG JENSEN**

b. Rådvad 1866, d. Hellerup 1935

An oval sterling silver tray. Rim with relief flower decor. Two carved wood handles. Georg Jensen 1925-1932. Design no. 350 A. Weight 1555 g. H. max. incl. handles 4 cm. W. 30 cm. L. 56 cm. Literature: David A. Taylor & Jason W. Laskey: "Georg Jensen Holloware - The Silver Fund Collection", ill. p. 156. DKK 30,000-40,000 / € 4,050-5,350



666



667

**667
JOHAN ROHDE**

b. Randers 1856, d. Hellerup 1935

"Acorn"/"Kongemønster". Sterling silver and silver cutlery set. Georg Jensen 1915-1930, 1933-1944 and after 1945. Designed 1915. Weight excluding pieces with steel 5121 g. (146)

Comprising:

- 12 fish knives
- 12 fish forks
- 13 dinner knives with long handle L. 22.7 cm.
- 12 dinner forks L. 19 cm.
- 3 dinner spoons L. 19 cm.
- 24 luncheon knives with long handle L. 20.3 cm.
- 24 luncheon forks L. 16.7 cm.
- 10 dessert spoons L. 17.2 cm.
- 12 pastry forks

- 12 teaspoons
- 2 butter knives
- 1 bottle opener with long handle
- 1 salad set with steel L. 23.7 cm.
- 1 large vegetable spoon L. 22.7 cm.
- 1 potato spoon L. 20 cm.
- 1 small serving spoon L. 16.8 cm.
- 1 mayonnaise ladle L. 17.3 cm.
- 1 sauce ladle with steel
- 2 steak forks

DKK 50,000 / € 6,700



668

668 ^{ARR}
ALEV EBÜZZIYA SIESBYE

b. Istanbul 1938
A circular stoneware bowl decorated with turquoise glaze. The upper rim with transparent glazed line decor. Signed alev, F153. Unique. H. 12-12.2 cm. Diam. 24-24.5 cm.
DKK 80,000-100,000 / € 10,500-13,500



670

670 ^{ARR}
BO KRISTIANSEN

b. Göteborg 1944, d. Copenhagen 1991
A large, round stoneware lid jar with incised letters. Lid with openwork centre. Partly decorated with reddish brown, light grey, ochre and black glaze. The inside decorated with light bluish grey glaze. Unsigned. Unique. H. 27 cm. Diam. 35 cm.
Provenance: Private collection, Denmark.
DKK 25,000-30,000 / € 3,350-4,050

671 ^{ARR}
BO KRISTIANSEN

b. Göteborg 1944, d. Copenhagen 1991
A large, circular stoneware jar. Slightly convex shape, the outside with incised letters. Decorated with blue, green and yellow glaze. The inside with transparent blue glaze. Unsigned. Unique. H. 30.2-30.7 cm. Diam. 37.2-38.2 cm.
Provenance: Private collection, Denmark.
DKK 50,000 / € 6,700



669

669 ^{ARR}
BO KRISTIANSEN

b. Göteborg 1944, d. Copenhagen 1991
A sculptural stoneware object. Rectangular shape with incised letters. Decorated with blue, rose, green, yellow and orange glaze. Unsigned. Unique. H. 16 cm. W. 33.7 cm. L. 42 cm.
Provenance: Private collection, Denmark.
DKK 25,000-30,000 / € 3,350-4,050



671

672^{ARR}
PER WEISS

b. Melby 1953, d. 2023

A round stoneware floor vase with incised relief decor. Decorated with dark brown, sand-coloured and transparent glaze with blue elements. The inside decorated with bluish black glaze. Marked monogram. Unique. H. 75 cm. Diam. max. 65 cm. *DKK 40,000 / € 5,350*



672

673
WILHELM KÅGE

b. Stockholm 1889, d. 1960

“Surrea”. A sculptural stoneware vase. Decorated with Carrara glaze. Designed 1938. Made by Gustavsberg, Sweden with faint mark. H. 45 cm. W. 21 cm. D. 20 cm. *DKK 20,000 / € 2,700*



673

674^{ARR}
ALEV EBÜZZIYA SIESBYE

b. Istanbul 1938

A circular stoneware bowl decorated with white glaze. The upper rim with cobalt glaze. Signed alev, M35. Unique. H. 11-11.3 cm. Diam. 13.5 cm. *Provenance: Private collection, Denmark. Acquired by the current owner in 2001.*

DKK 20,000–30,000 / € 2,700–4,050

675^{ARR}
ALEV EBÜZZIYA SIESBYE

b. Istanbul 1938

A circular stoneware vase decorated with cobalt glaze and horizontal, black glazed line decor. Signed alev 2000. Unique. H. 33 cm. Diam. 19.5-20 cm. *Provenance: Private collection, Denmark. Acquired by the current owner at Galleri Egelund, 2006.*

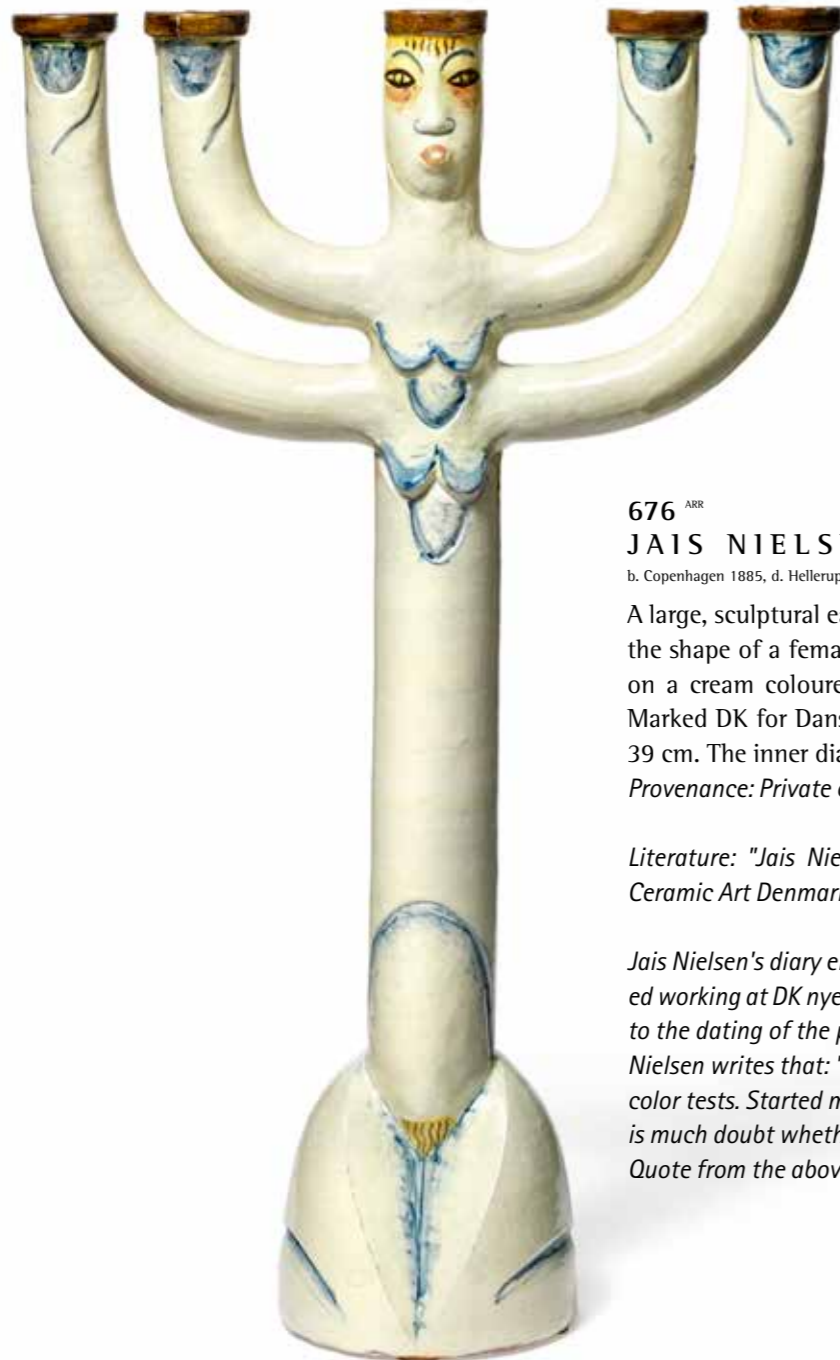
DKK 50,000–60,000 / € 6,700–8,050



674



675



676

676^{ARR}
J AIS N I E L S E N

b. Copenhagen 1885, d. Hellerup 1961

A large, sculptural earthenware candelabrum modelled in the shape of a female. Decorated with polychrome decor on a cream coloured base. Unsigned. Dated 1918 3-1. Marked DK for Dansk Kunsthandel. H. 63.5 cm. W. max. 39 cm. The inner diam. of candle holders approx. 2.8 cm. Provenance: Private collection, Denmark.

Literature: "Jais Nielsen - Epos i Ler", CLAY Museum of Ceramic Art Denmark, ill. pp. 10-11 and p. 30.

Jais Nielsen's diary entries states that on 3/1 1918 he started working at DK nye Lervare Fajance Fabrik which is similar to the dating of the present candelabrum. Furthermore Jais Nielsen writes that: "On January 27th DK has made my first color tests. Started making 2 large 5-arm candelabra, there is much doubt whether the arms can hold through the fire". Quote from the above mentioned literature.

DKK 20,000 / € 2,700



677^{ARR}
A X E L S A L T O

b. Copenhagen 1889, d. Frederiksberg 1961

"Daphne transforms into a tree". A stoneware figure. Decorated with Sung glaze with blue elements. Signed Salto, 20671. Royal Copenhagen. Made 1958. Designed 1940. H. 59.8 cm. W. 35. D. 18 cm.

Literature: Paul la Cour: "Axel Salto", Vor Tids Kunst, vol. no. 32, 1940, ill. p. 42.

Literature: "Axel Salto - Master of Stoneware", CLAY - Museum of Ceramic Art Denmark, ill. in model register fig. 176, p. 175.

DKK 80,000-100,000 / € 10,500-13,500



677



678

678^{ARR}

AXEL SALTO

b. Copenhagen 1889, d. Frederiksberg 1961

A round stoneware vase modelled in budded style. Decorated with Gundestrup glaze. Signed Salto, 1937. Royal Copenhagen. H. 18.5 cm. Diam. 13 cm. *Literature: "Axel Salto - Master of Stoneware", CLAY - Museum of Ceramic Art Denmark, ill. pp. 88-89 and in model register fig. 213, p. 177. Model no. 20708.*

The model was exhibited at the 1937 Paris World Exhibition. DKK 20,000-30,000 / € 2,700-4,050

679

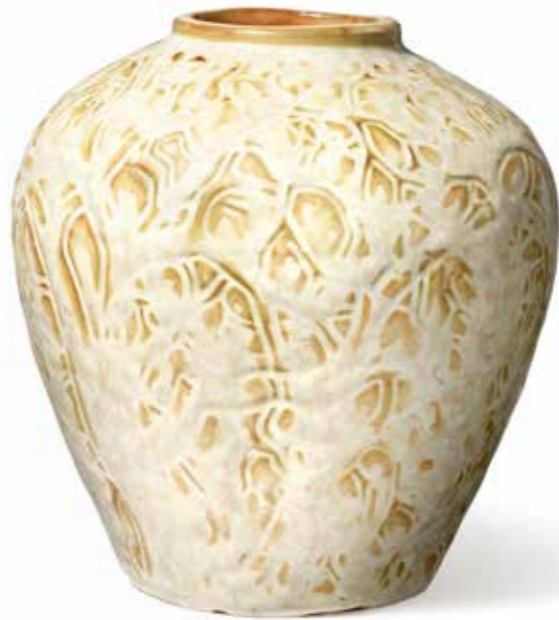
AXEL SALTO

b. Copenhagen 1889, d. Frederiksberg 1961

A round stoneware vase with incised leaves and branches. Decorated with Gundestrup glaze. Signed Salto. Royal Copenhagen. Designed 1944. H. 15 cm. Diam. 13.5 cm.

Literature: "Axel Salto - Master of Stoneware", CLAY - Museum of Ceramic Art Denmark, ill. in model register fig. 215, p. 177. Model no. 20710.

DKK 20,000-30,000 / € 2,700-4,050



679



680



681

680

AXEL SALTO

b. Copenhagen 1889, d. Frederiksberg 1961

A drop-shaped stoneware vase with relief decor. Decorated with Gundestrup glaze. Signed Salto. Royal Copenhagen. Designed 1945. H. 25 cm. Diam. max. 15 cm.

Literature: "Axel Salto - Master of Stoneware", CLAY - Museum of Ceramic Art Denmark, ill. in model register fig. 238, p. 178.

Model no. 20733. DKK 20,000-30,000 / € 2,700-4,050

681

AXEL SALTO

b. Copenhagen 1889, d. Frederiksberg 1961

A round stoneware vase modelled in budded style. Decorated with Sung glaze with blue elements. Signed Salto, 21440. Royal Copenhagen. Designed 1957. Made 1965. H. max. 13 cm. Diam. max. 12 cm.

Literature: "Axel Salto - Master of Stoneware", CLAY - Museum of Ceramic Art Denmark, ill. in model register fig. 296, p. 181.

DKK 40,000 / € 5,350



682

682

AXEL SALTO

b. Copenhagen 1889, d. Frederiksberg 1961

A round stoneware vase modelled with fruits, branches and leaves. Decorated with transparent, green glaze. Signed Salto. Royal Copenhagen. Designed 1944. H. 15 cm. Diam. max. 23 cm.

Literature: "Axel Salto - Master of Stoneware", CLAY - Museum of Ceramic Art Denmark, ill. p. 147 and in model register fig. 214, p. 177. Model no. 20709.

DKK 40,000-50,000 / € 5,350-6,700



683

683 ^{ARR}

KAJ GOTTLOB

b. Copenhagen 1887, d. 1976

A prototype glass vase with six polychrome glass cylinders with iridescent surface. Made 1962 by Venini, Murano, Italy. Not marked. H. max. 36.3 cm. W. max. 22.5 cm.

Provenance: Architect Kaj Gottlob, thence by descent in the family.

According to information provided by the seller, Kaj Gottlob designed the vase in connection with a refurbishment of the interior in Palmehaven at Hotel d'Angleterre, Copenhagen in the early 1960s. Two vases were then made by Venini, Italy. One vase became part of the interior at Plamehaven, the other present vase, Gottlob kept himself. DKK 20,000 / € 2,700

684

NANNY STILL

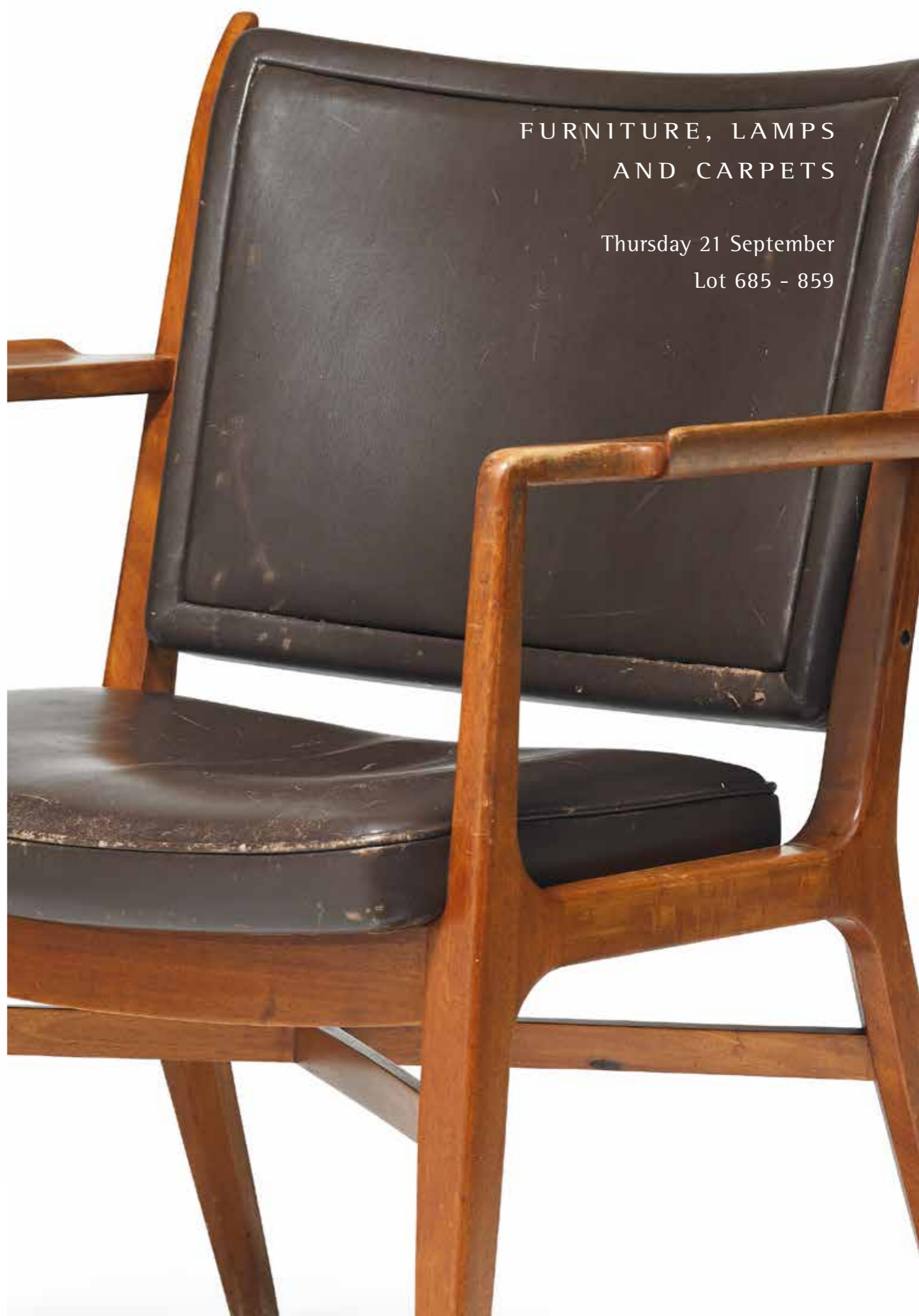
b. 1926, d. 2009

"Fleurs". A set of 11 sculptural, bottle-shaped, multi-coloured glass vases, of which ten with spout. Signed Riihimäen Lasi OY, Nanny Still. Two with paper label.

H. 32-33.5 cm. (11) DKK 30,000 / € 4,050



684



FURNITURE, LAMPS
AND CARPETS

Thursday 21 September

Lot 685 - 859

685

HANS J. WEGNER

b. Tønder 1914, d. Gentofte 2007

"The Chair". Early solid walnut armchair. Seat and back with woven cane. Model JH 501. Designed 1949. This example made approx. 1949-1950 by cabinetmaker Johannes Hansen, stamped.

Provenance: Private Danish collection of chairs.

Exhibited: Present chair shown at "Mesterværker - 100 års dansk møbelsnedkeri" at Kronborg Castle, fall 2000.

Model presented at The Copenhagen Cabinetmakers' Guild Exhibition at Designmuseum Danmark, 1949.

Literature: Grete Jalk [ed.]: "40 Years of Danish Furniture Design", Vol. 3, p. 98-101 and p. 140-142. DKK 40,000-50,000 / € 5,350-6,700



685

687

686

686

HANS J. WEGNER

b. Tønder 1914, d. Gentofte 2007

"JH 539". A solid teak stool. Seat with woven cane. Designed 1954. This example made approx. 1960s by cabinetmaker Johannes Hansen, with maker's metal tag. Seat: H. 45.5 cm. L. 66.5 cm. W. 38 cm.

Provenance: Private Danish collection of chairs.

Model presented at The Copenhagen Cabinetmakers' 400th anniversary exhibition in Forum, 1954.

Literature: Grete Jalk [ed.]: "40 Years of Danish Furniture Design", vol. 3, ill- pp. 280-281. DKK 15,000-20,000 / € 2,000-2,700

687

HANS J. WEGNER

b. Tønder 1914, d. Gentofte 2007

"Cowhorn Chair". A solid nutwood armchair, back with inlays. Seat with woven cane. Model JH 505. Designed 1952. This example made 1950-1960s by cabinetmaker Johannes Hansen, with maker's metal tag.

Provenance: Private Danish collection of chairs.

Model presented at The Copenhagen Cabinetmakers' Guild Exhibition at Designmuseum Danmark, 1952.

Literature: Grete Jalk [ed.]: "40 Years of Danish Furniture Design", vol. 3, ill. pp. 212-213. DKK 30,000-40,000 / € 4,050-5,350



688

688

HANS J. WEGNER

b. Tønder 1914, d. Gentofte 2007

"Cowhorn Chair". A solid teak armchair, back with inlays. Seat with woven cane. Model JH 505. Designed 1952. This example made 1950-1960s by cabinetmaker Johannes Hansen, with maker's metal tag.

Provenance: Private Danish collection of chairs.

Model presented at The Copenhagen Cabinetmakers' Guild Exhibition at Designmuseum Danmark, 1952.

Literature: Grete Jalk [ed.]: "40 Years of Danish Furniture Design", vol. 3, ill. pp. 212-213. DKK 30,000-40,000 / € 4,050-5,350



689

689
POUL HENNINGSEN

b. Ordrup 1894, d. Hillerød 1967

“PH-3/2”. Bronzed brass table lamp marked “Patented” and “PH-3”. Shades of single layer opaline glass. This example manufactured approx. 1930 by Louis Poulsen. H. 44 cm. DKK 75,000–100,000 / € 10,000–13,500



690

690
HANS J. WEGNER

b. Tønder 1914, d. Gentofte 2007

“JH 563”. Freestanding desk with solid oak frame. Teak top, front with two drawers. Stretcher with V-shape, brass fittings. Designed 1950. This example made 1950–1960s by cabinetmaker Johannes Hansen. H. 74 cm. L. 171.5 cm. W. 83 cm.

Model presented at the Copenhagen Cabinetmakers' Guild Exhibition at Designmuseum Danmark, 1950.

Literature: Grete Jalk [ed.]: “40 Years of Danish Furniture Design”, vol. 3, ill. p. 142. Literature: Johan Møller Nielsen: “Wegner: En dansk møbelkunstner”, ill. p. 118. DKK 100,000 / € 13,500

691
HANS J. WEGNER

b. Tønder 1914, d. Gentofte 2007

“The Bull Chair”. A solid teak armchair, back with inlays. Seat upholstered with black leather. Model JH 518. Designed 1961. This example made approx. 1960s by cabinetmaker Johannes Hansen, with maker's metal tag.

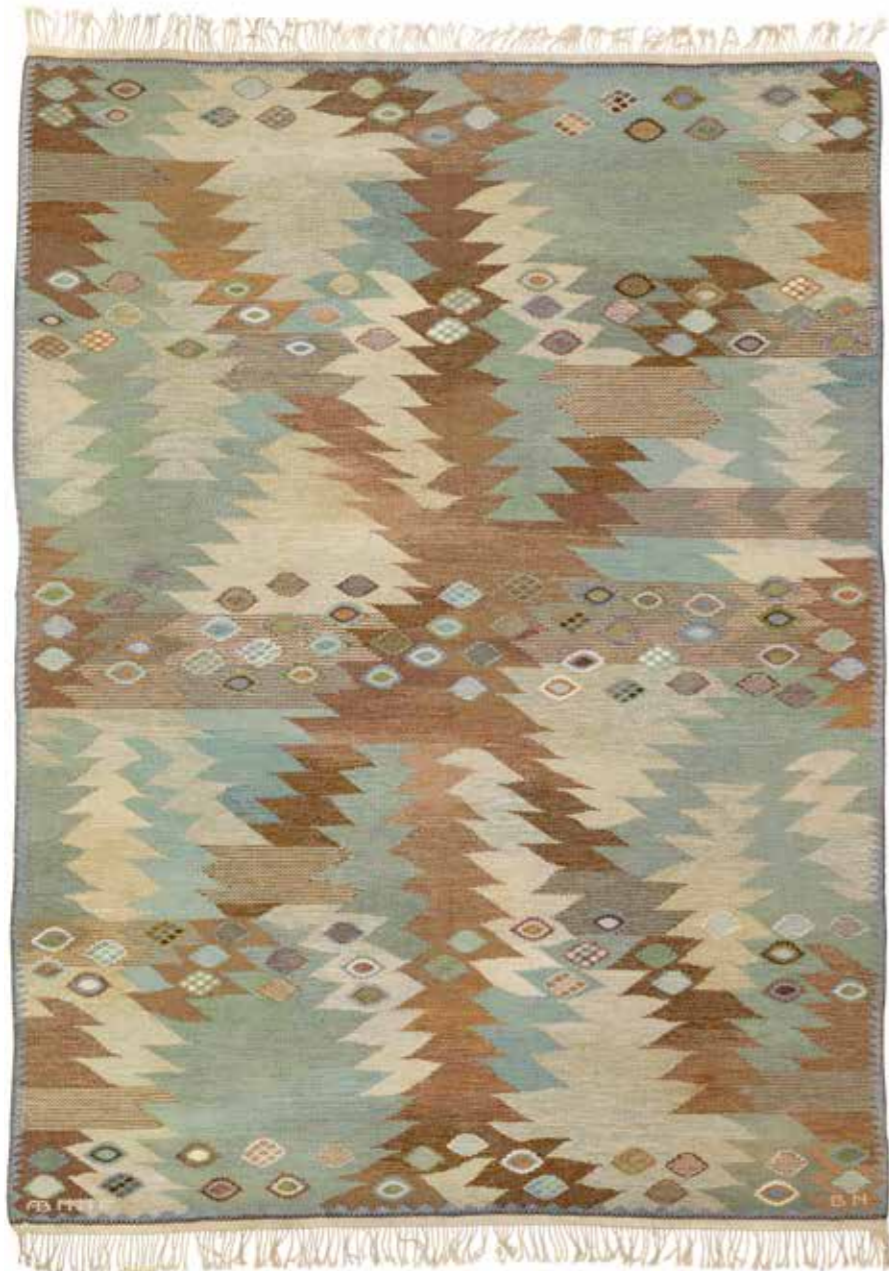
Provenance: Private Danish collection of chairs.

Model presented at The Copenhagen Cabinetmakers' Guild Exhibition at Designmuseum Danmark, 1961.

Literature: Grete Jalk [ed.]. “40 Years of Danish Furniture Design”, Vol. 4, pp. 162–163. DKK 50,000–60,000 / € 6,700–8,050



691



692

692
BARBRO NILSSON

b. Malmö 1899, d. Höganäs 1983

“Tånga, W lätt grön och brun”. Handwoven wool carpet in “gobeläng” flatweave technique. Pattern in shades of green and brown. Signed BN and AB MMF. Designed 1955. This example made approx. 1960s by AB Märta Måås-Fjetterström, Sweden. L. 225 cm. W. 168 cm.

Literature: Viggo Sten Möller: "En bok om Barbro Nilsson", Stockholm/Barcelona 1977, ill. p. 69.

Literature: Mailis Stensman: "Ännu Mera Mattor från Märta Måås-Fjetterströms ateljé i Båstad 1919-1999", Uddevalla 1999, ill. p. 11.

Literature: Liljevalchs konsthalls catalogue: "Märta Måås-Fjetterström, Märta flyger igen, 90 år med Märta Måås-Fjetterström", Värnamo 2009, ill. pp. 154-155. DKK 60,000 / € 8,050

693
HANS J. WEGNER

b. Tønder 1914, d. Gentofte 2007

“Papa Bear”. A wingback easy chair with Brazilian rosewood “nails” and stained beech legs. Sides, seat cushion and back upholstered with light green wool, back fitted with buttons. Model AP 19. Designed 1951. This example manufactured approx. 1960s by AP Stolen.

Model presented at the exhibition "Tidens Møbler" in Forum 1952.

DKK 100,000 / € 13,500



693

694

BØRGE MOGENSEN

b. Aalborg 1914, d. Gentofte 1972

Oak sideboard on runner legs. Front with two foldable doors with brass fittings. Oak interior with shelves and pull-out trays. Model BM 57. Designed 1957. This example manufactured 1960–1970s by P. Lauritsen & Son. H. 90.2 cm. W. 138.5 cm. D. 50 cm.

Literature: *Mobilia 1957*. DKK 20,000–25,000 / € 2,700–3,350



694

695

BØRGE MOGENSEN

b. Aalborg 1914, d. Gentofte 1972

“The Hunting Chair”. A pair of low, solid oak lounge chairs. Seat and back with patinated natural grain leather. Model 2229. Designed 1950. These examples manufactured approx. late 1990s by Fredericia Furniture. (2)

Literature: Grete Jalk [ed.]: “40 Years of Danish Furniture Design”, vol. 3, p. 154–157.

Literature: Arne Carlsen: “Møbler tegnet af Børge Mogensen”, ill. p. 42–43. DKK 60,000–75,000 / € 8,050–10,000



695





697



696

696
OLE WANSCHER

b. Frederiksberg 1903, d. Charlottenlund 1985

A patinated oak folding stool with cross-leg frame. Patinated grain leather seat, brass fittings. This example made approx. 1970s by cabinetmaker A.J. Iversen. DKK 20,000–25,000 / € 2,700–3,350

697
FINN JUHL

b. Frederiksberg 1912, d. Ordrup 1989

"The Chieftain Chair". Hokkaido oak easy chair with matching stool. Seat, armrests and back upholstered with "walnut Elegance" leather, back fitted with buttons. Model FJ 4900. Designed 1949. This example manufactured 2018 by House of Finn Juhl, brass plaque stamped no. 7/25. (2)
Present chair was made in a limited edition in 2018 with a total of 25 chairs made.

Model presented at The Copenhagen Cabinetmakers' Guild Exhibition at Designmuseum Danmark, 1949.

Literature: Grete Jalk [ed.]: "40 Years of Danish Furniture Design", vol. 3, pp. 122-125. DKK 100,000 / € 13,500

698
FINN JUHL

b. Frederiksberg 1912, d. Ordrup 1989

"FJ 46". A solid nutwood armchair with brass "shoes". Seat and back upholstered with patinated leather. Designed 1946. This example made approx. 1950-1960s by cabinetmaker Niels Vodder, stamped by maker.

Provenance: Private Danish collection of chairs.

Model presented at The Copenhagen Cabinetmakers' Guild Exhibition at Designmuseum Danmark, 1946.

Literature: Grete Jalk [ed.]: "40 Years of Danish Furniture Design", vol. 2, p. 320-321.

DKK 60,000-80,000 / € 8,050-10,500



698

699
FINN JUHL

b. Frederiksberg 1912, d. Ordrup 1989

"FJ 45". A teak easy chair. Sides, back and loose seat cushion upholstered with light blue wool, natural leather edgings. Designed 1945. This example made approx. 1950s by cabinetmaker Niels Vodder, stamped by maker.

DKK 150,000 / € 20,000



699



700

700

"PH-4/3". Bronzed brass table lamp marked "Pat. Appl.". Copper shades with later white glossy lacquer. This example manufactured 1926-1928 by Louis Poulsen. H. 53 cm.

Literature: "Lightyears ahead", p. 150.

DKK 50,000-60,000 / € 6,700-8,050

701

FINN JUHL

b. Frederiksberg 1912, d. Ordrup 1989

"BO 55". Freestanding two seater sofa with round, tapering stained beech legs. Sides, seat and curvy back upholstered with light bouclé fabric, sides and back fitted with buttons. Designed 1946. This example manufactured 1950-1960s by Bovirke. H. 81 cm. L. 133 cm. D. 72 cm. *DKK 50,000 / € 6,700*



701



702

702
VILHELM LAURITZEN

b. Slagelse 1894, d. Gentofte 1984

"Rådhusarmatur/City Hall light fixture". A pair of ceiling/wall lights with brass fitting. Shade of fluted opal plastic. These examples manufactured 1953 by Louis Poulsen. H. 20 cm. L. 125 cm. (2)

Presumably made for the expansion of Gladsaxe City Hall, designed by Vilhelm Lauritzen, which was completed in 1953.

Literature: Louis Poulsen catalogue "B 50", 1953.

DKK 20,000–25,000 / € 2,700–3,350

703
FINN JUHL

b. Frederiksberg 1912, d. Ordrup 1989

A pair of teak easy chairs. Seat and back upholstered with Niger leather. Model FD 136. Designed and manufactured 1956 by France & Daverkosen, with maker's tag and stamp. (2)

DKK 100,000 / € 13,500



703



704

704
EDVARD KINDT-LARSEN

b. Frederiksberg 1901, d. Gentofte 1982

TOVE KINDT-LARSEN

b. 1906, d. 1994

Solid teak swivel chair with oblique, tapering legs. Seat and back upholstered with original black leather. Designed 1957. This example made approx. 1960s by Thorald Madsen Cabinetmakers, with maker's brass tag. Seat: H. 44 cm.

Provenance: Private Danish collection of chairs.

Model presented at The Copenhagen Cabinetmakers' Guild Exhibition at Designmuseum Danmark, 1957.

Literature: Grete Jalk [ed.]: "40 Years of Danish Furniture Design", vol. 4, ill. p. 25. DKK 30,000-40,000 / € 4,050-5,350

705
EJNER LARSEN

b. 1917, d. 1987

AKSEL BENDER MADSEN

b. 1916, d. 2000

A pair of teak armchairs with round legs and oval stretchers. Seat, back and armrests upholstered with black leather. Designed 1948. These examples made approx. 1960 by cabinetmaker Ludvig Pontoppidan. (2)

Provenance: Ludvig Pontoppidan. Hence by descent in the family.

Literature: Grete Jalk [ed.]: "40 Years of Danish Furniture Design", vol. 3, p. 68. DKK 25,000-30,000 / € 3,350-4,050



705



706

706
EJNER LARSEN

b. 1917, d. 1987

AKSEL BENDER MADSEN

b. 1916, d. 2000

"Metropolitan". Teak armchair. Sculptural back and seat upholstered with black leather. Designed 1959. This example made approx. 1960s by cabinetmaker Willy Beck, with maker's metal tag.

Model presented at The Copenhagen Cabinetmakers' Guild Exhibition at Designmuseum Danmark, 1959.

Literature: Grete Jalk [ed.]: "40 Years of Danish Furniture Design", vol. 4, p. 78-81. DKK 40,000 / € 5,350



707

707
MÄRTA MÅÅS-FJETTERSTRÖM

b. Kimstad 1873, d. Helsingborg 1941

"Vit Botten" (White Base). Handwoven wool carpet in "rölakan" flat-weave technique with polychrome geometric pattern on light base. Signed MMF. Designed before 1919. This example made before 1941 by Märta Måås-Fjetterström, Sweden. L. 292 cm. W. 198 cm.

Literature: Tyra Lundgren: "Märta Måås-Fjetterström och väv-verkstaden i Båstad", Stockholm 1968, mentioned p. 111. DKK 30,000 / € 4,050

708
IB KOFOD-LARSEN

b. 1921, d. 2003

A rare "Elizabeth" armchair with teak frame. Seat and back upholstered with original, patinated natural leather. Designed 1958. This example made 1960s by Christensen & Larsen Cabinetmakers. Provenance: Bruun Rasmussen auction 857/1362. Acquired 1960s by previous owner at "Den Permanente".

Model presented at The Copenhagen Cabinetmakers' Guild Exhibition at Designmuseum Danmark, 1958.

Literature: Grete Jalk [ed.]: "40 Years of Danish Furniture Design", vol. 4, p. 48-49. DKK 40,000 / € 5,350



708



709

709
LYSBERG, HANSEN & THERP

A teak armchair, front legs with brass "shoes". Seat and back upholstered with patinated natural leather. This example manufactured 1945-1950 by Lysberg, Hansen & Therp, with metal tag.

DKK 15,000-20,000 / € 2,000-2,700



710

710
BJØRN WIINBLAD

b. Copenhagen 1918, d. 2006

A brass candle chandelier with eight branches with cylindrical clear glass shades. This example made approx. 1990s by Wiinblad's Værksted. H. 92 cm. Diam. 76 cm.

DKK 15,000-20,000 / € 2,000-2,700



711

711
LYSBERG, HANSEN & THERP

A Brazilian rosewood ladies desk, front with two drawers. Profiled top with brass "ribbon" inlay. Brass frame with rosewood "shoes". This example made 1940-1945 by Lysberg, Hansen & Therp. H. 72 cm. L. 124 cm. W. 61 cm.

DKK 20,000-25,000 / € 2,700-3,350



712

712
RAKEL CARLANDER

b. 1903, d. 1992

Handwoven wool carpet in "rölakan" flatweave technique. Greyish brown base with black/white ends with T-pattern. Unsigned. This example made approx. 1950s, Sweden. L. 353 cm. W. 253 cm.

DKK 20,000–25,000 / € 2,700–3,350

713
KAARE KLINT

b. Frederiksberg 1888, d. Copenhagen 1954

"The Red Chair". A set of six mahogany armchairs. Seat and back upholstered with patinated red coloured Niger leather, fitted with brass nails. Model 3758A. Designed 1930. These examples made approx. 1970s by Rud. Rasmussen Cabinetmakers. (6)

Literature: Gorm Harkær, Klintiana: "Kaare Klint", vol. 2, ill. and mentioned p. 79–80.
DKK 40,000 / € 5,350



713

714
POUL HENNINGSEN

b. Ordrup 1894, d. Hillerød 1967

"PH-1/1 Cascade". Bronzed brass six-arm chandelier. Brown bakelite socket houses. Shade fittings marked "PH-1" and "Patented". Amber coloured glass shades. This example manufactured 1930s by Louis Poulsen. H. 35 cm. Diam. 68 cm.

Literature: "Light Years Ahead!", ill. pp. 196–197.

DKK 50,000–60,000 / € 6,700–8,050



714



715



716

715

KAARE KLINT

b. Frederiksberg 1888, d. Copenhagen 1954

A patinated Cuban mahogany cabinet. Profiled front with three drawers and two pull-out leaves, above two doors behind which oak interior with pull-out trays. Handles and fittings of brass. Model no. 4268. Designed 1931. This example made 1930s by Rud. Rasmussen Cabinetmakers, with maker's paper label. H. 154 cm. W. 118 cm. D. 58.5 cm. *Label indistinctly numbered.*

Literature: Gorm Harkær, Klintiana: "Kaare Klint", vol. 2, ill. and referred to p. 70. DKK 20,000–25,000 / € 2,700–3,350

716

KAARE KLINT

b. Frederiksberg 1888, d. Copenhagen 1954

Freestanding two seater sofa on six-legged mahogany cross frame. Sides, seat and back upholstered with reddish brown coloured leather. Model 4118. Designed 1930. This example made 1980s by Rud. Rasmussen Cabinetmakers, with maker's paper label. H. 87 cm. D. 82 cm. L. 134 cm. *Label no. 40772.*

Litteratur: Gorm Harkær, Klintiana: "Kaare Klint", bind 2, s. 93. DKK 30,000–40,000 / € 4,050–5,350

717 *

POUL HENNINGSEN

b. Ordrup 1894, d. Hillerød 1967

"PH-4.5/3". Floor lamp with brown lacquered base and stem. Bakelite socket house. Red/gold lacquered copper shades. Browned brass top cap. This example manufactured approx. 1940s by Louis Poulsen. H. 156 cm. Diam. 45 cm. *Literature: "Light Years Ahead" p. 189. Model manufactured 1936–1951. DKK 60,000–80,000 / € 8,050–10,500*



717



718

**718
KAARE KLINT**

b. Frederiksberg 1888, d. Copenhagen 1954

Rare solid Cuban mahogany desk and matching drawer section. Macassar base and "shoes". Front with two drawers, top with two fold-down leaves. Drawer section with four drawers in front, bottom drawer for archives. Model no. 4895. Designed 1934. This example made 1930s by Rud. Rasmussen Cabinetmakers, table with maker's paper label. Desk: H. 76 cm. L. 98.5/147/195.5 cm. W. 71,5 cm. Drawer section: H. 74 cm. D. 68 cm. W. 48.5 cm. (2) *The model was originally exhibited at the BOKU Exhibition in Forum, 1934.*

Literature: Gorm Harkær, Klintiana: "Kaare Klint", vol. 2, ill. and referred to p. 52.

DKK 20,000–25,000 / € 2,700–3,350

**719
KAARE KLINT**

b. Frederiksberg 1888, d. Copenhagen 1954

"The Red Chair". Armchair with profiled Cuban mahogany frame. Seat and back upholstered with patinated Niger leather, fitted with brass nails. Model 3758A. Designed 1930. This example made approx. 1930s by Rud. Rasmussen Cabinetmakers. *Literature: Gorm Harkær, Klintiana: "Kaare Klint", vol. 2, ill. and mentioned p. 79–80.*

DKK 20,000 / € 2,700



719



**720
KAARE KLINT**

b. Frederiksberg 1888, d. Copenhagen 1954

"Games table for a lady". Mahogany set consisting of a table and matching set of four chairs. Square table with triangular fold-out leaves. Chairs with diagonal frame, back with stretchers. Seat with woven cane. These examples made 1940–1950s by Rud. Rasmussen Cabinetmakers, with maker's paper label. H. 67. cm. W./L. 61/87 cm. (5) *Label no. 20549.*

Presented at the Copenhagen Cabinetmakers' Guild Exhibition in 1946.

A contemporary critic then described it in this way: "...Professor Kaare Klint's Interior with Card Tables for A Lady, Perfect in terms of craftsmanship, notice the tabletop which consists of three layers of solid wood that have been glued together with the grains running at right angles to each other..."

Literature: Grete Jalk [ed.]: "40 years of Danish furniture design": the Copenhagen Cabinetmakers Guild exhibitions 1927–1966, vol. 2, ill. and described p. 312–313.

DKK 250,000 / € 33,500



720



721



720

721

**721
KAARE KLINT**

b. Frederiksberg 1888, d. Copenhagen 1954

“The Red Chair”. Set of 12 Cuban mahogany chairs with profiled frame, hereof a pair of armchairs. Seat and back upholstered with brown coloured Niger leather, fitted with brass nails. Model 3758A and 4751. Designed resp. 1927 and 1933. These examples made 1930s by Rud. Rasmussen Cabinetmakers, with maker's paper label. (12)

Label no. 12655 and 12690.

DKK 100,000–125,000 / € 13,500–17,000



722

722
POUL KJÆRHOLM

b. Østervrå 1929, d. Hillerød 1980

“PK 31/2”. Freestanding two seater sofa, matte chromed steel frame. Sides, back and loose cushions upholstered with black leather. Designed 1958. This example manufactured 1970s by E. Kold Christensen, stamped. H. 70 cm. L. 137 cm. D. 72 cm.
Literature: “Poul Kjærholm”, Arkitektens Forlag, 1999, pp. 98–99.
DKK 25,000–30,000 / € 3,350–4,050



723



724

723
POUL KJÆRHOLM

b. Østervrå 1929, d. Hillerød 1980

“PK 57”. Coffee table with chromed steel frame. Rectangular top of patinated ash wood. Designed 1957. This example manufactured approx. 1970s by E. Kold Christensen, stamped. H. 45 cm. W. 65 cm. L. 150 cm. DKK 15,000–20,000 / € 2,000–2,700

724
POUL KJÆRHOLM

b. Østervrå 1929, d. Hillerød 1980

“PK 22”. A pair of lounge chairs with chromed steel frame. Seat and back with woven cane. Designed 1956. These examples manufactured approx. 1970s by E. Kold Christensen, stamped. (2)
DKK 30,000–40,000 / € 4,050–5,350



725

725
POUL KJÆRHOLM

b. Østervrå 1929, d. Hillerød 1980

"PK 91". Folding stool with matte chromed steel frame. Seat with sand coloured canvas. Designed 1961. This example manufactured 1970s by E. Kold Christensen, stamped. *DKK 50,000 / € 6,700*



726

726
POUL KJÆRHOLM

b. Østervrå 1929, d. Hillerød 1980

"PK 54". Dining table with cubus frame of steel. Circular top of flintrolled light/grey marble. Designed 1963. This example manufactured 2019 by Fritz Hansen, stamped. H. 68.5 cm. Diam. 140 cm.

Literature: "Poul Kjærholm", Arkitektens Forlag, 1999, p. 20-21, 112-115 and 179.

Literature: Frederik Sieck: "Dansk Møbelkunst", ill. p. 151.

DKK 30,000-40,000 / € 4,050-5,350

727
POUL KJÆRHOLM

b. Østervrå 1929, d. Hillerød 1980

"PK 9". A set of six chairs with chromed steel frame. Seat and back upholstered with original, patinated red leather. Designed 1960. These examples manufactured 1970-1980s by E. Kold Christensen, stamped. (6) *DKK 60,000 / € 8,050*



727

728
JØRGEN KASTHOLM

b. Roskilde 1931, d. Düsseldorf 2007

PREBEN FABRICIUS

b. 1931, d. 1984

"Scimitar". Lounge chair with steel frame. Seat and pierced back upholstered with later natural leather. Model IS-63. Designed 1962–1963. This example made approx. 1972 by upholsterer Ivan Schlechter, frame stamped with monogram.

Provenance: Acquired 1972 at Imperial Møbler, Copenhagen.

DKK 30,000 / € 4,050

729
JØRGEN KASTHOLM

b. Roskilde 1931, d. Düsseldorf 2007

PREBEN FABRICIUS

b. 1931, d. 1984

"Scimitar". Lounge chair with steel frame. Seat and pierced back upholstered with later natural leather. Model IS-63. Designed 1962–1963. This example made approx. 1972 by upholsterer Ivan Schlechter, frame stamped with monogram.

Provenance: Acquired 1972 at Imperial Møbler, Copenhagen.

DKK 30,000 / € 4,050



728



729



730

730
POUL HENNINGSEN

b. Ordrup 1894, d. Hillerød 1967

"PH Four-Shade Lamp". 4/4½/4 pendant. Browned brass bayonet socket house and canopy. Amber coloured glass shades. This example manufactured 1930s by Louis Poulsen. Diam. 43 cm.

Literature: "Light Years Ahead", referred to and ill. pp. 240–242.

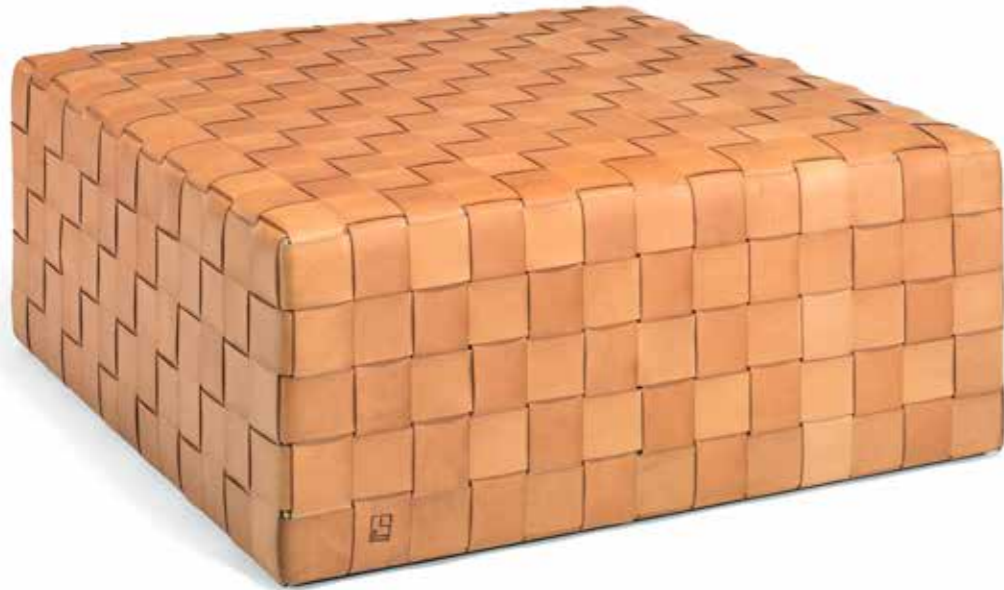
DKK 60,000–75,000 / € 8,050–10,000

731
IVAN SCHLECHTER

b. 1918, d. 2018

Large square ottoman / coffee table with woven girths of patinated natural leather. This example made approx. 2010 by upholsterer Ivan Schlechter, with maker's stamp. H. 42 cm. L./W. 100 cm.

DKK 25,000–30,000 / € 3,350–4,050



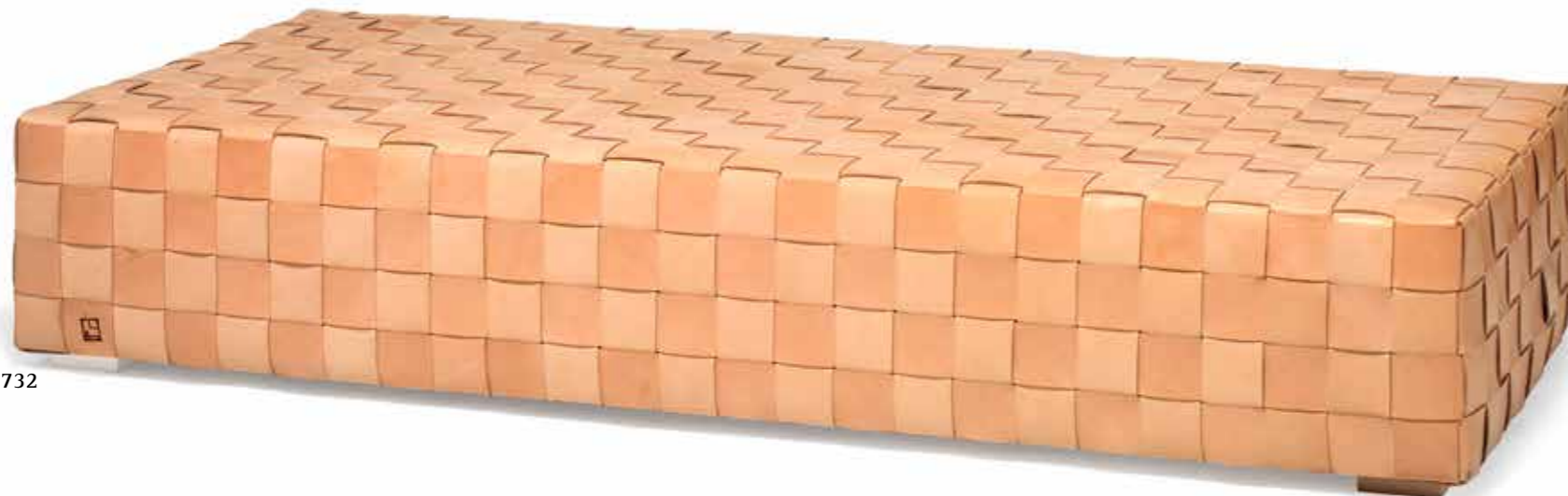
731

732
IVAN SCHLECHTER

b. 1918, d. 2018

Daybed covered with woven girths of patinated natural leather. This example made approx. 2010 by upholsterer Ivan Schlechter, with maker's stamp. H. 34 cm. L. 191 cm. W. 87 cm.

DKK 40,000 / € 5,350



732



733

733
GUNNAR AAGAARD ANDERSEN

b. Ordrup 1919, d. Munkerup 1982

Square easy chair with woven girths of patinated natural leather. Designed 1980. This example made approx. 2010 by upholsterer Ivan Schlechter, stamped. Seat: H. 36 cm. H. 60 cm. D. 58 cm. W. 76 cm.

Literature: Vibeke Petersen Gether "GAaA" 2016, ill. and described p. 522.

Literature: Mobilia, No. 296/97, 1980. Ill. and described p. 103.
"The chair consists of four pillows kept together by braided leather straps. The chair is frameless. The braid complies systematically with the outer as well as the inner forms that are made by the pillows together." Gunnar Aagaard Andersen, artist occasionally turned designer, was however in most peoples mind as well as probably in his own conception a painter associated with the abstract concrete simple geometric. But he describes his approach to his few and highly artistic furniture designs in the following manner: "In the act of designing furniture I once again have approached the figurative picture. Furniture is when applicable negative imprints of the human body. It is as the mould for a sculpture."
DKK 40,000 / € 5,350



734

734
ARNE VODDER

b. 1926, d. 2009

A pair of easy chairs and a matching freestanding three seater sofa with tapering Brazilian rosewood legs. Sides, back and loose seat cushions upholstered with patinated cognac coloured leather. Designed 1953. These examples made early 1960s by upholsterer Ivan Schlechter. Sofa: L. 175 cm. (3)

Provenance: Acquired early 1960s, hence by descent in the family.
DKK 40,000 / € 5,350



734



735

735
POUL HENNINGSEN

b. Ordrup 1894, d. Hillerød 1967

"PH-4/3". Patinated brass table lamp marked "Patented, PH-4". Red/white zinc top shade, single layer opaline glass middle shade, frosted glass bottom shade. This example manufactured 1930s for Louis Poulsen. H. 53 cm.

DKK 60,000 / € 8,050

736

FINN JUHL

b. Frederiksberg 1912, d. Ordrup 1989

"The Grasshopper Chair". Lounge chair with wengé frame. Seat and back upholstered with natural leather, back fitted with buttons. Designed 1938. This example manufactured 2022 by House of Finn Juhl/One Collection, marked and with brass plaque no. 44.

Model presented at The Copenhagen Cabinetmakers' Guild Exhibition at Designmuseum Danmark, 1938.

Literature: Grete Jalk [ed.]: "40 Years of Danish Furniture Design", vol. 2, pp. 76-77. DKK 100,000 / € 13,500



736

737

HANS J. WEGNER

b. Tønder 1914, d. Gentofte 2007

"Valet Chair". Sculptural wengé chair, seat with storage space underneath. Model PP 250. Designed 1953. This example made approx. 2015-2020 by PP Møbler, stamped.

Model presented at the Cabinetmaker's Guild Exhibition at Designmuseum Danmark, 1953.

Literature: Grete Jalk [ed.]: "40 Years of Danish Furniture Design", vol. 3, p. 244-247. DKK 75,000 / € 10,000



737



738

738
SVEA NORÉN

Sweden. 20th century.

Handwoven wool carpet in “rölakan” flatweave technique. Terracotta-coloured base with light grid pattern and geometrical patterns in shades of yellow, blue and brown. Signed SN. This example made second half of 20th century, Sweden. L. 366 cm. W. 233 cm.

DKK 50,000–60,000 / € 6,700–8,050

739

ARNE VODDER

b. 1926, d. 2009

“Credenza”. Freestanding Brazilian rosewood sideboard with six round legs. Front with two reversible sliding doors with resp. rosewood and white/yellow paint. Middle section with seven drawers with curvy handles. Fold-down front with black lacquered back, maple interior. Back fully veneered in rosewood. Model 29A. Designed 1958–1959. This example manufactured approx. 1960–1970s by P. Olsen Sibast. H. 80.5 cm. L. 249.5 cm. D. 47 cm.

Literature: “Bygge og Bo”, no. 3, September 1959, p. 5. Literature: “Mobilia” no. 78, January 1962.

When Arne Vodder designed this low sideboard he also presented what is probably the most loved and iconic piece of Danish storage furniture from the 1950–1960s. The model 29A was the flagship in a series of storage furniture that shared many of the same features. The series included chests of drawers, low sideboards and high cabinets. The series was long-lived and enjoyed great success in Europe as well as on the US market. The name “Credenza”, which in Italian simply means cabinet for tableware, probably stuck to this model as this was one of the few pieces of Danish Mid-century furniture that enjoyed a real commercial success in Italy.

DKK 80,000–100,000 / € 10,500–13,500



739



740

740 *
SVEND LANGKILDE

Denmark 20th century

Brazilian rosewood cabinet and chest of drawers, mounted on stained beech legs. Cabinet with two doors with brass fittings in front, interior with trays and shelves. Chest with four drawers in front. These examples made approx. 1960s by Langkilde Møbler. Retailed by Illums Bolighus, with retailer's metal tag. H. 66 cm. W. 100 cm. D. 47 cm. (2)

DKK 30,000–40,000 / € 4,050–5,350



741

741
STEEN EILER RASMUSSEN

b. 1827, d. 1912

A set of six Brazilian rosewood chairs with visible joints and curved bar in back. Seats upholstered with light coloured leather. Model 700. Designed 1966. These examples manufactured late 1960-1970s by Søborg Møbler, with maker's paper label. (6)
Literature: "Dansk Kunsthåndværk", 1966.

Architect Steen Eiler Rasmussen was a professor at the Royal Academy of Art but designed only few pieces of furniture. DKK 20,000–25,000 / € 2,700–3,350

742
IB KOFOD-LARSEN

b. 1921, d. 2003

Brazilian rosewood sideboard. Front with four doors and four drawers, interior with adjustable shelves and pull-out trays. Model FA 66. This example manufactured 1960-1970s by Faarup Møbelfabrik. H. 76.5 cm. W. 229.5 cm. D. 49.5 cm.

Literature: Mobilia No. 129, April 1966.

DKK 25,000 / € 3,350



742



743

743
SIGURD RESELL

b. Meldal 1920, d. 2010

Sculptural padauk armchair. Seat upholstered with black leather. Model SR 59. Designed 1959. This example made 1960s by cabinetmaker Niels Vodder, not stamped.

Provenance: Private Danish collection of chairs.

Model presented at The Copenhagen Cabinetmakers' Guild Exhibition at Designmuseum Danmark, 1959.

Literature: Grete Jalk [ed.]: "40 Years of Danish Furniture Design", vol. 4, pp. 24–25. DKK 40,000 / € 5,350



745

744
FINN JUHL

b. Frederiksberg 1912, d. Ordrup 1989

"FJ 50". Desk with solid Brazilian rosewood frame. "Floating" brazilian rosewood top with profiled edges. Front with drawer section with three drawers. This example made 1960s by cabinetmaker Niels Vodder, not stamped. H. 71.5 cm. L. 201 cm. W. 97 cm.

Variant of model presented at The Copenhagen Cabinetmakers' Guild Exhibition at Designmuseum Danmark, 1952.

Literature: Grete Jalk [ed.]: "40 Years of Danish Furniture Design", vol. 3, p. 232-233.

DKK 100,000–125,000 / € 13,500–17,000



744

745
POUL HENNINGSEN

b. Ordrup 1894, d. Hillerød 1967

"PH-1/1 Cascade". Two-level, nine-armed browned brass chandelier with brown bakelite socket houses. Yellow frosted glass shades, amber coloured glass bottom bowls. Shade holders marked "Patented" and "PH-1". This example manufactured 1930s by Louis Poulsen. Diam. 66 cm. *DKK 50,000 / € 6,700*



746

746^{ARR}

JUDITH JOHANSSON

b. Trollhättan 1916, d. Tenerife 1993

Handwoven wool carpet in "rölakan" flatweave technique. Geometric pattern in shades of grey and green. Signed JJ. Unique. This example made second half of 20th century, Sweden. W. 73 cm. L. 432 cm.

DKK 35,000 / € 4,700

747

FINN JUHL

b. Frederiksberg 1912, d. Ordrup 1989

"FJ 53". Freestanding two seater Brazilian rosewood sofa, "floating" armrests with brass fittings. Sides and back upholstered with light grey wool, seat with dark grey wool. Designed 1953. This example made 1950-1960s by cabinetmaker Niels Vodder. Retailed by Illums Bolighus with plaque. L. 128 cm.

Model presented at The Copenhagen Cabinetmakers' Guild Exhibition at Designmuseum Danmark, 1953.

Literature: Grete Jalk [ed.]: "40 Years of Danish Furniture Design", vol. 3, ill. pp. 270-271.

DKK 150,000 / € 20,000



747



748

POUL KJÆRHOLM

b. Østervrå 1929, d. Hillerød 1980

"PK 91". Folding stool with matte chromed steel frame. Seat with sand coloured canvas. Designed 1961. This example manufactured 1970s by E. Kold Christensen, not stamped. DKK 50,000 / € 6,700

**749
MÄRTA MÅÅS-FJETTERSTRÖM**

b. Kimstad 1873, d. Helsingborg 1941

"Blåringen". Handmade wool carpet in "knotted pile" technique with blue, pink, grey and yellow decor on light base and blue border. Signed AB MMF. Designed 1931. This example made after 1941 by AB Märta Måås-Fjetterström, Sweden. L. 304 cm. W. 242 cm.

Literature: Tyra Lundgren: "Märta Måås-Fjetterström och väv-verkstaden i Båstad", Stockholm 1968, mentioned p. 113. DKK 250,000 / € 33,500



749



750
PALLE SUENSON

b. 1904, d. 1986

A pair of patinated brass wall lamps with opaline glass shades. These examples manufactured 1960s. H. 24 cm. D. 35 cm. (2)

Provenance: Aarhus Oil Factory.

Literature: Johan Casper Crone, Peter Hancke, "Arkitekten: Palle Suenson", Copenhagen 1987.

DKK 15,000–20,000 / € 2,000–2,700

751
PALLE SUENSON

b. 1904, d. 1986

A pair of patinated brass wall lamps with opaline glass shades. These examples manufactured 1960s. H. 24 cm. D. 35 cm. (2)

Provenance: Aarhus Oil Factory.

Literature: Johan Casper Crone, Peter Hancke, "Arkitekten: Palle Suenson", Copenhagen 1987.

DKK 15,000–20,000 / € 2,000–2,700



752
PALLE SUENSON

b. 1904, d. 1986

A pair of patinated brass wall lamps with opaline glass shades. These examples manufactured 1960s. H. 24 cm. D. 35 cm. (2)

Provenance: Aarhus Oil Factory.

Literature: Johan Casper Crone, Peter Hancke, "Arkitekten: Palle Suenson", Copenhagen 1987.

DKK 15,000–20,000 / € 2,000–2,700



753
HANS J. WEGNER

b. Tønder 1914, d. Gentofte 2007

"Valet Chair". Sculptural, solid pine chair. Solid teak seat with storage space underneath. Model JH 540. Designed 1953. This example made 1970s by cabinetmaker Johannes Hansen, stamped.

Provenance: Birthday present given to the current owner in 1980.

Model presented at the Cabinetmaker's Guild Exhibition at Designmuseum Danmark, 1953.

Literature: Grete Jalk [ed]: "40 Years of Danish Furniture Design", vol. 3, pp. 244–247. DKK 75,000 / € 10,000



754

754

BARBRO NILSSON

b. Malmö 1899, d. Höganäs 1983

"Tånga, mellanblå". Handwoven wool carpet in "gobeläng" flatweave technique. Pattern in shades of blue, violet and grey. Signed BN and AB MMF. Designed 1955. This example made approx. 1950-1960s by AB Märta Måås-Fjetterström, Sweden. L. 247 cm. W. 178 cm. *Literature: Viggo Sten Möller: "En bok om Barbro Nilsson", Stockholm/Barcelona 1977, p. 69.*

Literature: Mailis Stensman: "Ännu Mera Mattor från Märta Måås-Fjetterströms ateljé i Båstad 1919-1999", Uddevalla 1999, p. 11.

Literature: Liljevalchs konsthalls catalogue: "Märta Måås-Fjetterström, Märta flyger igen, 90 år med Märta Måås-Fjetterström", Värnamo 2009, pp. 154-155. DKK 100,000 / € 13,500

755

HANS J. WEGNER

b. Tønder 1914, d. Gentofte 2007

"JH 567". Dining table with oval solid teak top with extension and three veneered teak extra leaves. Solid oak frame with fold-down support leg. Designed 1952. This example made 1960s by cabinetmaker Johannes Hansen, stamped. H. 72 cm. L. 179/243/307/371 cm. W. 131.5 cm.

Model presented at the Copenhagen Cabinetmakers' Guild Exhibition at Designmuseum Danmark, 1952.

Literature: Grete Jalk [ed.], "40 Years of Danish Furniture Design", 1987, vol. 3, ill. pp. 212-213. DKK 60,000-80,000 / € 8,050-10,500



755

756

HANS J. WEGNER

b. Tønder 1914, d. Gentofte 2007

"The Chair". A set of eight oak armchairs. Seat upholstered with black leather. Model JH 503. Designed 1949. These examples made 1960-1970s by cabinetmaker Johannes Hansen, stamped. (8)

Model presented at The Copenhagen Cabinetmakers' Guild Exhibition at Designmuseum Danmark, 1949.

Literature: Grete Jalk [ed.]: "40 Years of Danish Furniture Design", Vol. 3, pp. 98-101 and p. 140-142. DKK 80,000-100,000 / € 10,500-13,500



756



757

758

HANS J. WEGNER

b. Tønder 1914, d. Gentofte 2007

"JH 585". Teak telephone table mounted on oak legs, top with black formica inlay. Front with shelves and four drawers with brass handles. Designed 1958. This example made approx. 1960s by cabinetmaker Johannes Hansen. H. 57 cm. W. 75 cm. D. 43 cm.

Model presented at The Copenhagen Cabinetmakers' Guild Exhibition at Designmuseum Danmark, 1958.

Literature: Grete Jalk [ed.]: "40 Years of Danish Furniture Design", vol. 4, pp. 46-47 (not illustrated).

Literature: Mobilia No. 41, Nov.-December 1958, p. 55.

DKK 20,000 / € 2,700



758



759

759

HANS J. WEGNER

b. Tønder 1914, d. Gentofte 2007

“JH 512”. A patinated oak folding chair. Seat and back with woven cane. Model JH 512. Designed 1949. This example made approx. 1950-1960s by cabinetmaker Johannes Hansen, stamped.

Model presented at The Copenhagen Cabinetmakers' Guild Exhibition at Designmuseum Danmark, 1949. L

literature: Grete Jalk [ed.]. "40 Years of Danish Furniture Design", Vol. 3, pp. 98-99. DKK 30,000-40,000 / € 4,050-5,350



760

760

HANS J. WEGNER

b. Tønder 1914, d. Gentofte 2007

Rare solid pine “Buck Chair” with tapering legs. Seat and back with woven sand coloured girths. Designed 1959. This example made 1960s by cabinetmaker Johannes Hansen.

DKK 80,000-100,000 / € 10,500-13,500



761

761 ^{ARR}

ANNA THOMMESEN

b. 1908, d. 2004

Handwoven wool carpet in flatweave technique. Geometric motif in shades of blue, yellow, green and brown. This example designed and made 1950-1960s by Anna Thommesen. L. 110 cm. W. 71.5 cm. Provenance: Artist Arne Johannessen.

DKK 15,000-19,000 / € 2,000-2,550

762

BØRGE MOGENSEN

b. Aalborg 1914, d. Gentofte 1972

A patinated oak chest of drawers. Front with eight drawers, fitted with special brass handles. Model A 234. This example manufactured 1960s by C.M. Madsen for FDB, stamped. H. 92.5 cm. W. 122 cm. D. 44.5 cm.

Literature: FDB catalogue 1964-1965, p. 38.

DKK 20,000 / € 2,700



762



763

763

BØRGE MOGENSEN

b. Aalborg 1914, d. Gentofte 1972

"The Hunting Chair". Low lounge chair with solid ash frame. Seat and back with patinated natural grain leather from Dominion Belting Company. Model 2229. Designed 1950. This example made approx. 1969 by cabinetmaker Erhard Rasmussen.

Provenance: Acquired 1969 by present owner's father. Hence by descent in the family.

Literature: Grete Jalk [ed.]: "40 Years of Danish Furniture Design", vol. 3, p. 154-157.

Literature: Arne Carlsen: "Møbler tegnet af Børge Mogensen", ill. p. 42-43.

Literature: Noritsugu Oda: "Danish Chairs", ill. p. 128-129.

DKK 40,000 / € 5,350



764

764
SIGVARD BERNADOTTE

b. 1907, d. 2002

Handwoven wool carpet in "rölakan" flatweave technique. Geometric pattern in green and light shades with brown border. Signed SB. This example made second half of 20th century, Sweden. L. 270 cm. W. 144 cm.

DKK 40,000 / € 5,350



765

765
POUL HENNINGSEN

b. Ordrup 1894, d. Hillerød 1967

"PH-2/2"/"Short Miniature". Browned brass table lamp. Bakelite switch house and socket house. Shade fitting marked "Patented" and "PH-2/2". Amber coloured glass shades. This example manufactured 1930s by Louis Poulsen. H. 33 cm.

Literature: "Light Years Ahead", ill. p. 164.

DKK 30,000–40,000 / € 4,050–5,350

766
EJNER LARSEN

b. 1917, d. 1987

AKSEL BENDER MADSEN

b. 1916, d. 2000

Dining table with cherry wood frame. Rectangular Cipollini marble top. This example made 1967 by cabinetmaker Willy Beck, with maker's paper label. H. 73.5 cm. L. 145 cm. W. 105 cm.

Provenance: Acquired 1967 by present owner's father. Hence by descent in the family.

DKK 60,000 / € 8,050



766

767

EDVARD KINDT-LARSEN

b. Frederiksberg 1901, d. Gentofte 1982

TOVE KINDT-LARSEN

b. 1906, d. 1994

Solid teak swivel chair with oblique, tapering legs. Seat and back upholstered with Niger leather. Designed 1957. This example made 1957-1960s by Thorald Madsen Cabinetmakers, with maker's brass tag. Seat height. 44 cm.

Model presented at The Copenhagen Cabinetmakers' Guild Exhibition at Designmuseum Danmark, 1957.

Literature: Grete Jalk [ed.]: "40 Years of Danish Furniture Design", vol. 4, ill. p. 25. DKK 40,000 / € 5,350



767



768



768

EJNER LARSEN

b. 1917, d. 1987

AKSEL BENDER MADSEN

b. 1916, d. 2000

"Metropolitan". A pair of solid teak armchairs. Sculptural back and seat upholstered with original, patinated, natural grain leather, upholstered and stamped by Dahlman. Model 2842/L. Designed 1959. These examples made 1960s by cabinetmaker Willy Beck, with maker's metal tag. (2)

Model presented at The Copenhagen Cabinetmakers' Guild Exhibition in 1959.

Literature: Grete Jalk [ed.]: "40 Years of Danish Furniture Design", vol. 4, chair referred to and ill. pp. 78-81.

DKK 125,000-150,000 / € 17,000-20,000



769

769
BARBRO NILSSON

b. Malmö 1899, d. Höganäs 1983

"Salerno, enkel blå". Handwoven wool carpet in "rölakan" flatweave technique. Geometric pattern in shades of blue on light base. Signed BN and AB MMF. Designed 1952. This example made after 1952 by AB Märta Måås-Fjetterström, Sweden. L. 206 cm. W. 162 cm. *Litterature: Märta Måås-Fjetterström, "Märta flyger igen, 90 år med Märta Måås-Fjetterström", Värnamo 2009, ill. p. 151.*

Litterature: Tyra Lundgren: "Märta Måås-Fjetterström, och väv-verkstaden i Båstad", mentioned p. 115, and ill. fig. 57. DKK 35,000–40,000 / € 4,700–5,350



770

770
SCANDINAVIAN DESIGN

Set of four brass up/down-light wall sconces with perforated shades. These examples manufactured approx. 1940–1950s. H. 43 cm. (4)

DKK 10,000–15,000 / € 1,350–2,000

771
DANISH CABINETMAKER

Freestanding two seater sofa with stained beech legs. Sides, seat and back upholstered with light wool fabric, sides and back fitted with buttons. This example made approx. 1930–1940s, Denmark. H. 65 cm. L. 145 cm. D. 80 cm.

DKK 25,000 / € 3,350



771



772

772
ANNA-GRETA SJÖQVIST

b. 1908, d. Skåne 1993, Sweden. 20th century.

Handwoven wool carpet in "rölakan" flatweave technique. Geometric pattern in shades of light grey, red and blue. Signed AGS. This example made approx. 1950-1960s, Sweden. W. 242 cm. L. 347 cm.

DKK 80,000 / € 10,500

773

FRITZ HANSEN

Stained beech wingback chair. Seat and back with woven sea grass. This example manufactured 1940s by Fritz Hansen.

DKK 15,000-20,000 / € 2,000-2,700



773

774

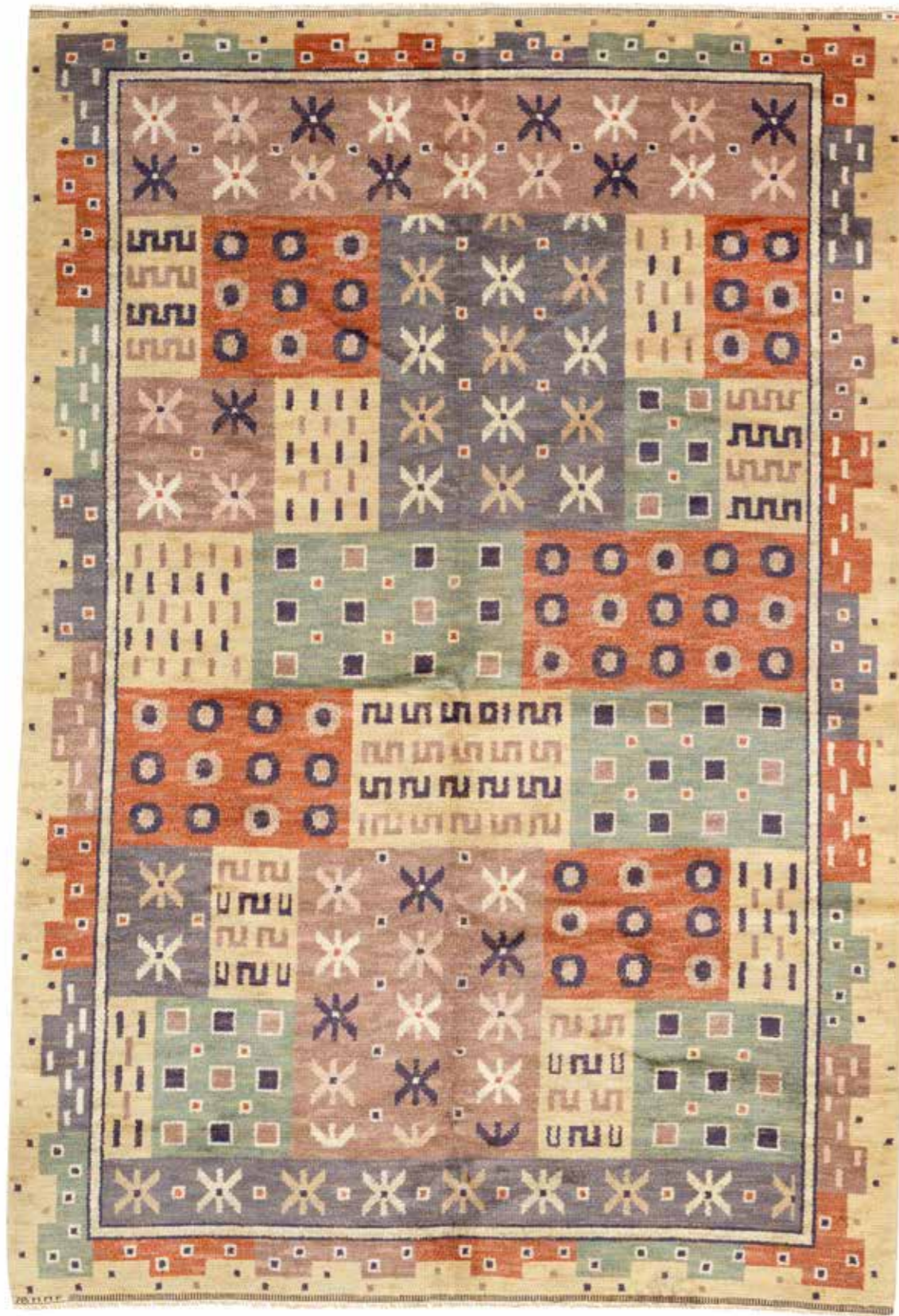
DANISH CABINETMAKER

Easy chair with stained beech legs. Sides, seat and back upholstered with light beige-brown bouclé fabric from Dedar, back fitted with buttons. This example made approx. 1940s, Denmark.

DKK 30,000-40,000 / € 4,050-5,350



774



775

775
MÄRTA MÅÅS-FJETTERSTRÖM

b. Kimstad 1873, d. Helsingborg 1941

“Joakim”. Handmade wool carpet in “knotted pile” technique. Polychrome geometric pattern with flowers. Signed AB MMF. Designed 1929. This example made after 1941 by AB Märta Måås-Fjetterström, Sweden. L. 308 cm. W. 209 cm. *Literature: Tyra Lundgren: “Märta Måås-Fjetterström och väv-verkstaden i Båstad”, Stockholm 1968, mentioned p. 113.*

DKK 100,000 / € 13,500

776
FLEMMING LASSEN

b. 1902, d. 1984

A pair of rattan and cane wicker easy chairs. Cushion upholstered with dusty green wool from DAW (Danish Art Weaving). Model 340. Designed 1940. These examples made 1940s by E.V.A. Nissen, with maker's metal tag. (2)

DKK 30,000 / € 4,050



776



777

777

CARL DANGEL

Two handwoven wool carpets in "rölakan" flatweave technique. Polychrome geometric pattern on green base. Signed CD. These examples made second half of 20th century. Largest carpet: L. 290 cm. W. 120 cm. Smallest carpet: L. 124 cm. W. 87 cm. (2)

DKK 30,000–40,000 / € 4,050–5,350

778

INGO MAURER

b. Tyskland 1932

"SHICHI" Bamboo pendant from the "Uchiwa" series. Seven fan-shaped leaves covered with rice paper. Adjustable suspension cord. Designed 1973. This example made 1970s for Design M, München, with maker's label. H. 25 cm. Diam. 54 cm.

DKK 50,000–60,000 / € 6,700–8,050

779

UNKNOWN DESIGNER

Dining table with oval, solid elm wood top with profiled rim. Six ceramic pedestal legs, decorated with glazes in shades of blue, grey and green. Made approx. 2000s. H. 71 cm. L. 219.5 cm. W. 97.5 cm.

DKK 30,000–40,000 / € 4,050–5,350



778



779



780

780
AGE FAITH-ELL

b. Växjö 1912, d. s.p. 1988

"Sommar". Handwoven wool carpet in mixed "rölakan" and "rya" technique. Pattern in red, green, yellow, blue and grey on beige base with white rya-outlines. Signed and dated on reverse SKLH, 1946. Designed 1942. This example made 1946 by Södra Kalmar Läns Hemslöjd, Sweden. L. 313 cm. W. 213 cm. DKK 80,000 / € 10,500



781

781
ERIK REIFF

b. 1923, d. 2006

Set of 12 circular earthenware wall mirrors. Fluted rims and decorated with glaze in shades of blue and yellow. These examples manufactured approx. 1950-1960s by Knabstrup, Denmark. Diam. 26 and 31.3 cm. (12) DKK 20,000-25,000 / € 2,700-3,350

782
DANISH DESIGN

Solid pine desk and matching armchair. Front with four drawers. Seat with woven paper cord. These examples manufactured approx. 1970s, presumably by Dyrlund. Table: H. 70.5 cm. L. 151 cm. W. 74.5 cm. (2) DKK 20,000 / € 2,700



782



783

783
MARIANNE RICHTER

b. Helsingborg 1916, d. Mölle 2010

“Rödclint” (Knapweed). Handwoven wool carpet in “rölakan” flatweave technique. Geometric pattern in red and beige. Signed MR and AB MMF. Designed 1944. This example made second half of 20th century by AB Märta Måås-Fjetterström, Sweden. L. 209 cm. W. 140 cm.

Literature: Tyra Lundgren: “Märta Måås-Fjetterström och väv-verkstaden i Båstad”, Stockholm 1968, mentioned p. 117.
DKK 45,000 / € 6,050

784
PAAVO TYNELL

b. 1890, d. 1973

Height adjustable brass pendant with perforated shade. Frosted glass and white plastic bottom shade. Model no. A 1965. Designed 1948. This example manufactured approx 1950s by Taito Oy, Finland. H. 29 cm. Diam. 45 cm.
Literature: Julkaistu Näyttelyn “Paavo Tynell ja Taito Oy”, yhteydessä Designmuseossa, 2005, pp. 103 and 106-107.

DKK 50,000 / € 6,700

785
DANISH CABINETMAKER

A pair of sculptural, high back elm wood easy chairs. Back with pleated white girths, shell shaped neckrest mounted with grain leather straps. Cushions in seat, back and neck upholstered with white bouclé fabric. These examples made approx. 1930-1940s, Denmark. (2)

Provenance: Originates from Skodsborg Badesanatorium.

DKK 30,000 / € 4,050



784



785





786

786
BARBRO NILSSON

b. Malmö 1899, d. Höganäs 1983

“Marina, grön”. Handmade wool carpet in “rya” technique. Pattern in shades of green. Signed BN and AB MMF. Designed 1956. This example made second half of 20th century by AB Märta Måås-Fjetterström, Sweden. W. 156 cm. L. 470 cm. *Literature: Tyra Lundgren: “Märta Måås-Fjetterström och väv-verkstaden i Båstad”, Stockholm 1968, mentioned p. 115.*

DKK 75,000–100,000 / € 10,000–13,500

787
BRUNO MATHSSON

b. Värnamo, Sverige 1907, d. s.p. 1988

“Pernilla 3”. Moulded, laminated beech chaise longue. Seat and back upholstered with light sheepskin. Designed 1944. This example manufactured 1970 by Karl Mathsson, Sweden, stamped by maker. L. approx. 170 cm. DKK 30,000 / € 4,050



787



788

788
ESTRID ERICSON

Square wall mirror. Frame with patterned cretonne decorated with vines and gold leaf. Designed and made 1940s by Svenskt Tenn, Sweden. H./W. 55 cm.

Literature: Christian Björk: “Estrid Ericsson, Svenska Arkitekter och Formgivare”, p. 151.

DKK 15,000–20,000 / € 2,000–2,700



789

789
MÄRTA MÅÅS-FJETTERSTRÖM

b. Kimstad 1873, d. Helsingborg 1941

"Vita Spetsporten" (The Gothic Portal). Handwoven wool carpet in "knotted relief pile" technique. White relief pattern on light brown base. Signed AB MMF. Designed 1934. This example made after 1941 by AB Märta Måås-Fjetterström, Sweden. L. 312 cm. W. 203 cm.

Literature: Tyra Lundgren: "Märta Måås-Fjetterström och väv-verkstaden i Båstad", Stockholm 1968, mentioned p. 76, ill. fig. 42.

Literature: Liljevalchs konsthalls catalogue: "Märta Måås-Fjetterström, Märta flyger igen, 90 år med Märta Måås-Fjetterström", Värnamo 2009, mentioned and ill. pp. 82-83.

"Vita Spetsporten" was originally designed in 1934 for crown princess Louise of Sweden, and examples has been gifted to the queens of Denmark and United Kingdom. Source: Tyra Lundgren: "Märta Måås-Fjetterström och väv-verkstaden i Båstad", p. 76.

DKK 60,000 / € 8,050

790
DANISH DESIGN

A pair of oak floor lamps with white lacquered base. Adjustable nickel plated arm with light fabric shade. These examples manufactured approx. 1950s, Denmark. Height adjustable 120-165 cm. (2)

DKK 20,000 / € 2,700



790

791
SVANTE SKOGH

A pair of stained beech easy chairs with fluted seat front and legs. Seat and back upholstered with long-haired white sheepskin. These examples manufactured 1940s by Förenade Möbelfabrikerna, Linköping with maker's metal tag. (2)

DKK 30,000 / € 4,050



791



792

792
JACOB KJÆR

b. 1896, d. 1957

Freestanding Brazilian rosewood desk, top with partly raised edges. Front with four drawers, brass handles. This example made 1950-1960s by cabinetmaker Jacob Kjær. H. 75 cm. L. 145 cm. W. 75 cm.

DKK 15,000 / € 2,000

793
JACOB KJÆR

b. 1896, d. 1957

A pair of mahogany armchairs with pierced slats in back. Seat upholstered with black horsehair, black leather edgings. These examples made approx. 1940s by cabinetmaker Jacob Kjær. (2)

DKK 20,000 / € 2,700



793



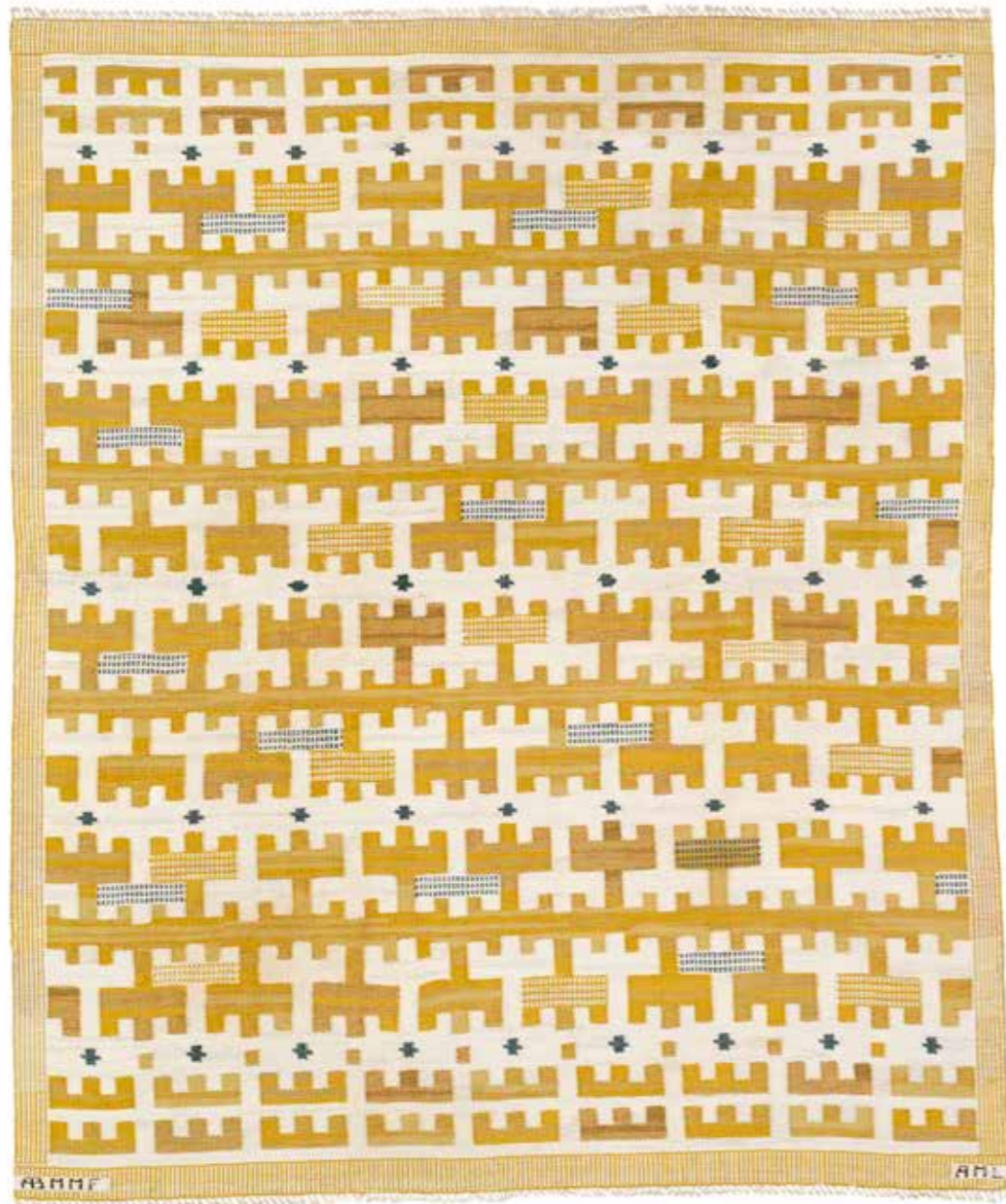
794

794
MÄRTA MÅÅS-FJETTERSTRÖM

b. Kåmstad 1873, d. Helsingborg 1941

"Munka Ljungby". Handwoven wool carpet in "rölakan" flatweave technique. Polychrome geometric pattern on light base. Signed AB MMF. Designed 1933. This example made after 1941 by Märta Måås-Fjetterström AB, Sweden. L. 300 cm. W. 198 cm.

Literature: Tyra Lundgren: "Märta Måås-Fjetterström och väv-verkstaden i Båstad", Stockholm 1968, mentioned p. 113. DKK 100,000 / € 13,500



795

795
ANN - MARI LINDBOM

b. 1916, d. 1992, married Forsberg

"Gulbroka". Handwoven wool carpet in "rölakan" flatweave technique. Geometric pattern in shades of yellow and beige with green details. Signed AML and AB MMF. Designed 1944. This example made second half of 20th century by AB Märta Måås-Fjetterström, Sweden. L. 240 cm. W. 200 cm.

Literature: Tyra Lundgren: "Märta Måås-Fjetterström och väv-verkstaden i Båstad", Stockholm 1968, model ill. fig. 63, mentioned p. 116.

Literature: Liljevalchs konsthalls catalogue: "Märta Måås-Fjetterström, Märta flyger igen, 90 år med Märta Måås-Fjetterström", Värnamo 2009, model ill. pp. 162-163.

DKK 40,000-50,000 / € 5,350-6,700



796

796
BERT

b. 1937, d. Farum 2017

A Brazilian rosewood stool. Seat with woven cane. Designed 1957. This example made approx. 1960s by cabinetmaker Wørts. H. 40 cm. W./L. 45 cm.

Model designed for Kunsthåndværkets Prisopgave 1957 and presented at The Copenhagen Cabinetmakers' Guild Exhibition at Designmuseum Danmark, 1958.

Literature: Grete Jalk [ed.]: "40 Years of Danish Furniture Design", vol. 4, p. 74-75.

Literature: Bernt and Arkitektens forlag [ed.]: "Møbel & rum", ill. p. 188-189.

DKK 12,000-15,000 / € 1,600-2,000

797
LUDVIG PONTOPPIDAN

b. c. 1899, d. København 1965

Brazilian rosewood cigar box with brass inlays. Mahogany interior. Bottom covered with patinated natural leather with incised signature. Designed 1958. This example made 1958-1960's by cabinetmaker Ludvig Pontoppidan. H. 7.5 cm. W. 35 cm. D. 29 cm.

Literature: "Mobilia" no. 41, November-December 1958.

DKK 40,000 / € 5,350



797



798
DANISH CABINETMAKER
 Two oak wall lamps with organically shaped adjustable arms. Mounted with pleated Le Klint shades. These examples made approx. 1950s, Denmark. D. 90 cm and 110 cm. (2)
 DKK 20,000 / € 2,700

798



799
EDVARD KINDT-LARSEN
 b. Frederiksberg 1901, d. Gentofte 1982
TOVE KINDT-LARSEN
 b. 1906, d. 1994
 Solid mahogany swivel chair with oblique, tapering legs. Seat and back upholstered with original patinated natural leather. Designed 1957. This example made approx. 1960s by Thorald Madsen Cabinetmakers. Seat: H. 44 cm.
Model presented at The Copenhagen Cabinetmakers' Guild Exhibition at Designmuseum Danmark, 1957.
Literature: Grete Jalk [ed.]: "40 Years of Danish Furniture Design", vol. 4, ill. p. 25.
 DKK 20,000–25,000 / € 2,700–3,350

799

800
EDVARD KINDT-LARSEN
 b. Frederiksberg 1901, d. Gentofte 1982
TOVE KINDT-LARSEN
 b. 1906, d. 1994
ATTRIBUTED
 A nutwood cabinet. Lower section with curved front and tambour doors, interior with four drawers and shelf. Upper section with two profiled doors, joints and keyholes with brass inlays, inside of doors with circular nutwood inlays, interior with pull-out trays. Made approx. 1945, presumably by cabinetmaker Gustav Bertelsen. H. 161.5 cm. W. 120 cm. D. 41/53.5 cm.
During the years 1942–1946 the architect couple Tove & Edvard Kindt-Larsen presented pieces of furniture with the same type of circular inlays at the Copenhagen Cabinetmakers' Guild exhibitions. This cabinet is most likely from this period.
 DKK 30,000–40,000 / € 4,050–5,350



800

801

OLE WANSCHER

b. Frederiksberg 1903, d. Charlottenlund 1985

"Colonial". A Brazilian rosewood two seater sofa, seat with woven cane. Loose cushions in seat and back upholstered with light fabric. Model PJ 149/2. Designed 1959. This example manufactured 1960s by P. Jeppesen. L. 125 cm.

DKK 50,000 / € 6,700



801



802

802

POUL HENNINGSEN

b. Ordrup 1894, d. Hillerød 1967

"Swan chandelier". Five branched chandelier with browned brass frame and socket houses. 2/2 frosted glass shades. Shade fittings marked "Patented" and "PH-2". This example manufactured 1930s by Louis Poulsen. Diam. 72 cm.

DKK 30,000 / € 4,050



803

803
ARNE JACOBSEN

b. Copenhagen 1902, d. s.p. 1971

"Seven Chair". A swivel armchair with steel frame with castors. Seat, back and armrests upholstered with brown Niger leather. Model 3217. Designed 1955. This example manufactured 1960-1970s by Fritz Hansen, stamped. DKK 20,000 / € 2,700



804

804
POUL HENNINGSEN

b. Ordrup 1894, d. Hillerød 1967

"PH-2/2". A pair of nickel plated brass wall lamps with amber coloured glass shades and bottom bowls. Shade fittings marked "P.H.-2" and "Patented". These examples manufactured 1930s by Louis Poulsen. (2) Literature: "Light Years Ahead", model described and ill. p. 190. DKK 75,000-100,000 / € 10,000-13,500



805

805
HANS J. WEGNER

b. Tønder 1914, d. Gentofte 2007

"AT 325". Desk with patinated oak top, front with two drawers. Chrome-plated steel frame with oak "shoes". Designed approx. 1961. This example manufactured approx. 1960-1970s by Andr. Tuck, stamped. H. 72 cm. L. 200 cm. W. 90 cm.

Literature: "Mobilia", no. 70, May 1961, pp. 86-87.
DKK 100,000 / € 13,500



806

806
ARNE JACOBSEN

b. Copenhagen 1902, d. s.p. 1971

"Royal". A pair of matte chromed steel wall lamps. Grey and white plastic shade. Oxidized metal handle. These examples manufactured 1950s by Louis Poulsen. (2)

Provenance: The SAS Royal Hotel, Copenhagen.

Literature: Michael Sheridan, "Room 606 – The SAS House and the work of Arne Jacobsen", Phaidon Press Limited, 2003, p. 98 DKK 50,000 / € 6,700

807
PIET HEIN

b. 1905, d. 1996

Set of five bar stools with chromed steel frame. Circular seat upholstered with brown Niger leather. Model FL 9511. Designed 1961. These examples manufactured 1979 by Fritz Hansen, three with maker's label. H. 81 cm. (5)

DKK 20,000–25,000 / € 2,700–3,350



807

808
POUL KJÆRHOLM

b. Østervrå 1929, d. Hillerød 1980

"PK 9". A set of six chairs with chromed steel frame. Seat and back upholstered with original, patinated red leather. Designed 1960. These examples manufactured 1970–1980s by E. Kold Christensen, stamped. (6)

DKK 80,000 / € 10,500



808



809

809
PREBEN FABRICIUS

b. 1931, d. 1984

JØRGEN KASTHOLM

b. Roskilde 1931, d. Düsseldorf 2007

“Scimitar”. Lounge chair with steel frame. Seat and pierced back upholstered with later natural leather. Model IS-63. Designed 1962–1963. This example made approx. 1972 by upholsterer Ivan Schlechter, frame stamped with monogram.

Provenance: Acquired 1972 at Imperial Møbler, Copenhagen. DKK 30,000 / € 4,050



810

810
POUL KJÆRHOLM

b. Østervrå 1929, d. Hillerød 1980

“PK 12”. Armchair with chromed tubular steel frame. Seat upholstered with brown Niger leather. Designed 1964. This example manufactured 1970s by E. Kold Christensen, stamped “Denmark”.

Literature: “Arkitektur”, no. 5, 1968.

Literature: Y. Futagawa: “Houses in Northern Europe 2”, 1974.

Literature: Michael Sheridan: “Poul Kjærholm – Furniture Achitect”, ill. p. 118. DKK 50,000 / € 6,700



811

811
PREBEN FABRICIUS

b. 1931, d. 1984

JØRGEN KASTHOLM

b. Roskilde 1931, d. Düsseldorf 2007

“Grasshopper”. Chromed steel chaise longue covered with sand coloured canvas. Loose cushions and headrest upholstered with patinated light brown leather. Armrests with grain leather cord. Model FK 87. Designed 1965. This example manufactured approx. 1972 by Alfred Kill, Germany.

Provenance: Acquired 1972 at Imperial Møbler, Copenhagen. DKK 80,000–100,000 / € 10,500–13,500



812

**812
BODIL KJÆR**

b. Hatting 1932

A Brazilian rosewood sideboard and matching drawer cabinet, mounted on castors. Fronts resp. with sliding doors and three drawers. Sideboard with steel handles, oak interior with shelves. These examples manufactured approx. 1970s by E. Pedersen & Søn, drawer cabinet with maker's label. Sideboard: H. 49 cm. L. 123.5 cm. D. 44 cm. Drawer cabinet: H. 49 cm. D. 61 cm. W. 44 cm. (2)

DKK 25,000–30,000 / € 3,350–4,050

**813
BODIL KJÆR**

b. Hatting 1932

Freestanding Brazilian rosewood sideboard mounted on steel runner legs. Front with three sliding doors, steel handles. Oak interior with shelves. This example made approx. 1970s by E. Pedersen & Søn. H. 63 cm. L. 184 cm. D. 44 cm.

DKK 20,000–25,000 / € 2,700–3,350



813



814

**814
BODIL KJÆR**

b. Hatting 1932

"Office Desk". Freestanding Brazilian rosewood desk with steel runner frame. Top with four integrated drawers and central lock mechanism. This example manufactured approx. 1970s by E. Pedersen & Søn, with part of maker's label. H. 72 cm. W. 92 cm. L. 184 cm.

Part of the Office-2000 series, developed as elements of architecture, designed as an extension of Bodil Kjær's acclaimed "Office Desk", which was created during her work for CI Designs, Boston, 1959. Literature: Peter Beck: "Det essentielle: Arkitekt Bodil Kjær om sine internationale arbejder 1950–2000" (The Essential: Architect Bodil Kjær on Her International Design 1950–2000), p. 59. "The openness and flexibility that was characteristic of many of the leaders that architect Bodil Kjær encountered during the planning of the office became the indirect catalyst for the development of the office furniture, now known as the "2000 series". The architect reasons that open and flexible people would function better in an open and flexible physical environment and therefore designed, in collaboration with these types of users, a series of office furniture for leaders: The idea was that each person can choose his or her furniture and design a working environment that suits him or her best."

DKK 100,000 / € 13,500



815

**815
GUNVOR NORDSTRÖM**

Handwoven wool tapestry. Polychrome pattern with flowers in blue, purple and pink on light greyish blue base. Signed GH and GN. Made 1954-1955 by Gotlands Hemslöjd, Sweden. L. 218 cm. W. 145 cm.

DKK 30,000 / € 4,050



816

816

HANS J. WEGNER

b. Tønder 1914, d. Gentofte 2007

"PP 586". A solid cherry wood fruit dish, mounted on loose, three legged steel base. Designed 1956. This example made 2007 by PP Møbler, with maker's stamp. H. 32 cm. Diam. 65 cm.

Provenance: Private Danish collection of chairs.

Only 8 examples were made in cherry wood in 2006/2007 on the occasion of the model's 50 year anniversary. DKK 15,000 / € 2,000

817

HANS J. WEGNER

b. Tønder 1914, d. Gentofte 2007

"Ox Chair". Easy chair and matching stool with tubular steel frame. Sides, seat, back and stool upholstered with black patinated leather. Model AP 46 and AP 49. Designed 1960. These examples manufactured 1960s by AP-Stolen. (2)

Literature: Noritsugu Oda. "Danish Chairs", 1999, p. 121.

Literature: Johan Møller Nielsen. "Wegner en dansk Møbelkunstner", 1965, pp. 71-72. DKK 75,000 / € 10,000



817



818

HANS J. WEGNER

b. Tønder 1914, d. Gentofte 2007

“The Flag Halyard Chair”. A pair of easy chairs with original green lacquered steel frame, wood “shoes”. Chromed steel top with flag halyard. Neck cushions upholstered with orange fabric. Brown/white long-haired sheepskin included. Model GE 225. Designed 1950. These examples manufactured 1950–1960s by Getama, Gedsted. (2) Model presented at The Arts & Crafts Spring Exhibition at Designmuseum Danmark in 1950.

Literature: “Dansk Kunsthåndværk”, no. 5, 1950, ill. p. 86.

Literature: Noritsugu Oda: “Danish Chairs”, 1999, ill. p. 112.

DKK 200,000 / € 27,000



818



819

819
NANNA DITZEL

b. Copenhagen 1923, d. s.p. 2005

JØRGEN DITZEL

b. Frederiksberg 1921, d. København 1961

Wool carpet with geometric pattern of squares in shades of grey and white. Designed 1954. This example manufactured approx. 1960s by Unika-Væv. L. 225 cm. W. 169 cm.

Literature: Henrik Sten Møller: "Motion and Beauty. The book of Nanna Ditzel", Copenhagen 1998, ill. p. 98.

DKK 20,000 / € 2,700



820

820
NANNA DITZEL

b. Copenhagen 1923, d. s.p. 2005

A teak ladies desk with small drawer in front. Tapering oak legs. This example manufactured approx. 1960s by Kolds Savværk. H. 69,5 cm. L. 120 cm. W. 60 cm.

DKK 20,000 / € 2,700

821
NANNA DITZEL

b. Copenhagen 1923, d. s.p. 2005

JØRGEN DITZEL

b. Frederiksberg 1921, d. København 1961

"Ring Chair". A pair of lounge chairs with oak frame. Seat and back upholstered with green/white Sisu wool from Kvadrat. Model 114. Designed 1958. These examples manufactured approx. 1960s by Kolds Savværk. (2)

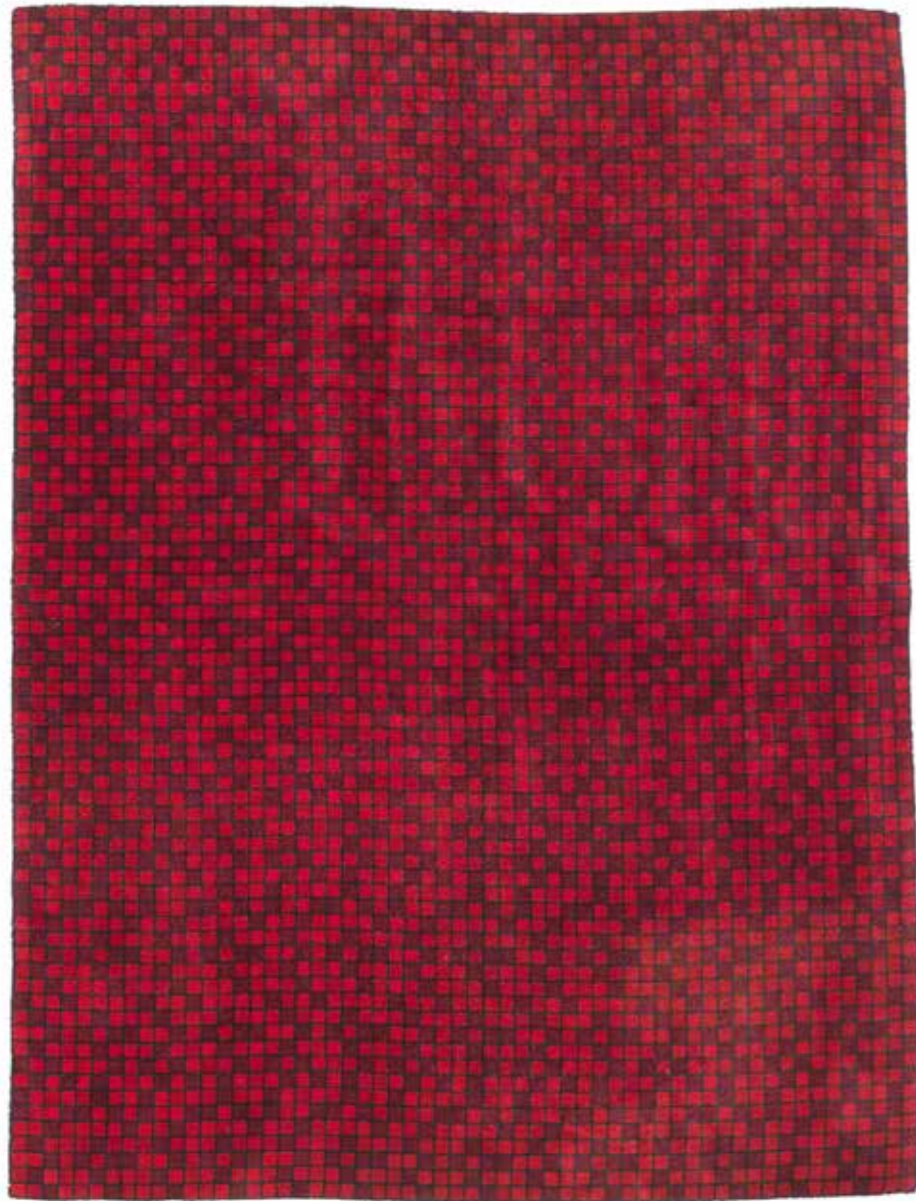
Model presented at the exhibition "Købestævnet" Fredericia, 1958.

Literature: Mobilia no. 33, April 1958.

DKK 30,000 / € 4,050



821



822

822

NANNA DITZEL

b. Copenhagen 1923, d. s.p. 2005

JØRGEN DITZEL

b. Frederiksberg 1921, d. København 1961

Wool carpet with geometric square pattern in shades of red. Designed 1954. This example manufactured approx. 1960s by Unika-Væv. L. 266 cm. W. 170 cm.

Literature: Henrik Sten Møller: "Motion and Beauty. The book of Nanna Ditzel", Copenhagen 1998, ill. p. 98.

DKK 20,000 / € 2,700



823

823

NANNA DITZEL

b. Copenhagen 1923, d. s.p. 2005

Teak dining table and matching set of six chairs. Seats with patinated woven cane. Chair model 110. Designed 1954. These examples manufactured approx. 1960s by Kolds Savværk. Table: H. 69.5 cm. L. 180.5 cm. W. 90 cm. (7)

Chair model presented at "Købestævnet" in Fredericia 1954.

Literature: "Dansk Kunsthåndværk" no. 7-8, 1954 and no. 7, 1955.

DKK 30,000 / € 4,050



823



824

824

DANISH DESIGN

A pair of wall mounted mirrors with rounded, patinated brass frame. These examples made approx. 1940s, Denmark. H. 100 cm. W. 70 cm. (2) DKK 20,000 / € 2,700



826

826

FINN JUHL

b. Frederiksberg 1912, d. Ordrup 1989

Two solid teak bowls. Large bowl on three small "feet". Stamped Design Finn Juhl, Teak. Made and stamped by Kay Bojesen, Denmark. H. max. 7.5 cm. W. 22.1 cm. L. 23.3 cm. Small bowl stamped KB eneret. H. 5.5 cm. W. 14.5 cm. L. 15 cm. (2)

Provenance: Private Danish collection of chairs.

DKK 15,000 / € 2,000



825

825

FINN JUHL

b. Frederiksberg 1912, d. Ordrup 1989

"BO 101". A teak table/bench with brass sides. Anodized steel frame with tall teak "shoes". Designed 1953. This example manufactured 1960s by Bovirke. H. 40 cm. L. 183 cm. W. 45 cm. *Literature: Esbjørn Hiorth: "Arkitekten Finn Juhl", 1990, ill. pp. 56-57.*

DKK 30,000-40,000 / € 4,050-5,350

827

FINN JUHL

b. Frederiksberg 1912, d. Ordrup 1989

"FJ 53". Freestanding two seater teak sofa with "floating" armrests on brass fittings. Sides, seat and back upholstered with grey wool. Designed 1953. This example made approx. 1950-1960s by cabinetmaker Niels Vodder, not stamped. L. 128 cm.

Model presented at The Copenhagen Cabinetmakers' Guild Exhibition at Designmuseum Danmark, 1953.

Literature: Grete Jalk [ed.]: "40 Years of Danish Furniture Design", vol. 3, ill. pp. 270-271. DKK 80,000 / € 10,500



827

828

FINN JUHL

b. Frederiksberg 1912, d. Ordrup 1989

"FJ 53". Teak easy chair with "floating" armrests on brass fittings. Sides, seat and back upholstered with grey wool. Designed 1953. This example made approx. 1950-1960s by cabinetmaker Niels Vodder, not stamped.

Model presented at The Copenhagen Cabinetmakers' Guild Exhibition at Designmuseum Danmark, 1953.

Literature: Grete Jalk [ed.]: "40 Years of Danish Furniture Design", vol. 3, ill. pp. 270-271. DKK 60,000 / € 8,050



828

829

FINN JUHL

b. Frederiksberg 1912, d. Ordrup 1989

"Ross" coffee table with white painted tubular frame with teak "shoes". Organic shaped teak top with brass inlay with circular indentation. Designed and made 1948 by cabinetmaker Niels Vodder. H. 55.5 cm. L. 119.5 cm. W. 60 cm.

Provenance: Professor Alf Ross. Hence by descent in the family.

Finn Juhl designed the furniture for the home of Alf Ross. Only this very table made by cabinetmaker Niels Vodder exists. Hence put into serial production.

The black-and-white photo shows Alf Ross and family around the table. Present owner is sitting on his lap.

Literature: Anne Louise Sommer "Watercolours by Finn Juhl". Strandberg Publishing, 2015.

The two original drafts for the table exist in Finn Juhl's sketch archive at Designmuseum Denmark. A version in oak with a green lacquered frame and a version in teak with a white lacquered frame. Alf Ross went with the latter. The other version is painted in the above literature.

The table is part of a series of tables from around 1945–1950 where Finn Juhl most clearly obliterates the distinction between function and artistic expression. He uses different materials, each of which point to their functional purpose, while at the same time transforming it to a sculpture due to their different colours and shapes.

The Ross table with the straight lines on the frames, circle motif on the organic top, balancing on the rounded teak "shoes", is significantly inspired by the Swiss artist Sophie Tauber-Arp and her works and thoughts on balance and movement. It is furniture art in the most literal sense.

The recess in the brass plate is presumably, similar to Finn Juhl's table from 1945, intended to accommodate the tin can with glass lid (Model A1432) that Björn Trägård designed for Firma Svenskt Tenn in 1930. However, there is no memory of it having been present.

DKK 400,000 / € 53,500



829



830

FINN JUHL, ATTRIBUTED

b. Frederiksberg 1912, d. Ordrup 1989

Solid teak table / bench mounted on tapering legs. Perforated top with squares. Made approx. 1948 by cabinetmaker Niels Vodder. H. 43 cm. L. 139.5 cm. W. 40 cm.

Provenance: Professor Alf Ross. Hence by descent in the family.

According to present owner, the granddaughter of Alf Ross, the bench has always been in the house of the grandparents. A house that was furnished with Finn Juhl pieces in 1948 including the coffee table on lot no. XXX. The bench is characterized by the criss-cross slats on the top, which while not often seen in Juhl's furniture it can be found in a unique table he designed in 1947 for the dentist Mr. Ravn, just to illustrate it was not foreign to him. Most typical is however the form of the legs that follow Finn Juhl's characteristic twist of holding a straight outer line and a curved or tilted inner side. This can be seen again and again in his tables; the FJ 41, FJ 44, The Ravn table, etc. and also in his well known coffee table FD 532 in solid teak for France & Son.

DKK 75,000–100,000 / € 10,000–13,500



830



831

831

POUL HENNINGSEN

b. Ordrup 1894, d. Hillerød 1967

"PH-2/1". Patinated browned brass tilting lamp. Switch in counterweight. Single layer opaline glass shades. This example manufactured 1930s by Louis Poulsen. H. 16-42 cm. L. 46 cm.

Literature: "Light Years Ahead". pp. 186-187.

DKK 60,000–80,000 / € 8,050–10,500

832

FINN JUHL

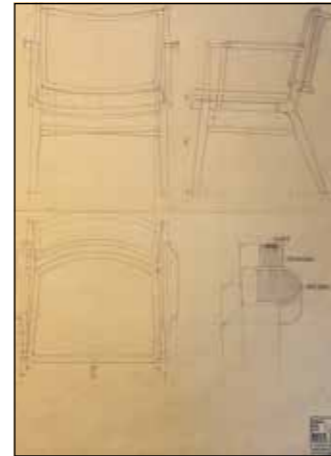
b. Frederiksberg 1912, d. Ordrup 1989

"FJ 45". A teak easy chair. Sides, back and loose seat cushion upholstered with blue wool, natural leather edgings. Designed 1945. This example made approx. 1950-1960s by cabinet-maker Niels Vodder, not stamped. Retailed by Illums Bolighus, with maker's metal tag.

DKK 80,000-100,000 / € 10,500-13,500



832



833

FINN JUHL

b. Frederiksberg 1912, d. Ordrup 1989

"FJ 42". Rarely offered mahogany armchair. Seat and back upholstered with brown leather. Designed and made approx. 1942 by cabinetmaker Niels Vodder. *Provenance: Gifted by Finn Juhl to present owner's grandmother in connection with her studies at Skolen for Boligindretning (the School of Interior Design where FJ taught), graduating class of 1955.*

The model designed for the Cabinetmakers' Guild Exhibition in 1942 (see photo), hence made in few examples, for Editor Westermann's villa, amongst others.

Present chair was used by Finn Juhl, presumably in his house or at his drawing studio before he gifted it to present owner's grandmother.

The chair is an example of Finn Juhl pursuing several paths in his design – both the organically sculptural but also the more rational modernistic. This model shows features that later reappeared in several of Finn Juhl's pieces – for example the small "horns" at the top corners of the back. DKK 100,000-200,000 / € 13,500-27,000



833



834

834

ANN - MARI LINDBOM

b. 1916, d. 1992, married Forsberg

"Kråkan" (The Crow). Handmade wool carpet in "rya" technique. Geometric pattern in shades of brown and sand-coloured. Designed 1946. Signed AML and AB MMF. This example made after 1946 by AB Märta Måås-Fjetterström, Sweden. L. 249 cm. W. 200 cm.

Literature: Tyra Lundgren: "Märta Måås-Fjetterström och väv-verkstaden i Båstad", Stockholm 1968, mentioned p. 116.

DKK 35,000-40,000 / € 4,700-5,350

835

JØRGEN HØJ

b. 1925

Set of four teak chairs. Seat and back with woven cane. These examples made approx. 1950s by cabinetmaker Thorald Madsen. (4)

DKK 20,000 / € 2,700

836

H. BROCKMANN - PETERSEN, ATTRIBUTED

Furniture designer 1950-1960s

Teak dining table with flip-down leaves. Made 1950s by cabinetmaker Louis G. Thiersen. H. 71 cm. L. 120/220 cm. W. 75 cm.

Provenance: Former cabinetmaker employed by cabinetmaker Louis G. Thiersen.

DKK 20,000-30,000 / € 2,700-4,050



835



836



837

837
ERIK RIISAGER HANSEN
 Ladies teak desk/dressing table, mounted on tapering legs. Rail with narrow drawer. Top with fold-up mirror, underneath which storage space with small adjustable tray. Model no. 65. This example made approx. 1950-1960s by Haslev Møbelsnedkeri, with maker's paper label. H. 70 cm. W. 110 cm. D. 65 cm. *DKK 20,000 / € 2,700*



838



838
SEVERIN HANSEN JR.

b. 1936, d. 2020, Denmark, 20th century

A pair of teak side tables, drawer integrated in rail. Underlying woven cane shelf. Model 35. These examples manufactured 1950-1960s by Haslev Møbelsnedkeri. H. 46.5 cm. L. 48 cm. W. 31 cm. (2)

DKK 15,000-20,000 / € 2,000-2,700

839
ARNE WAHL IVERSEN

b. Nyborg 1927, d. 2016

A pair of rare teak lounge chairs and a matching stool. Seats with pull-out extension function and extra fold-down support legs. Back and loose cushions in seat and stool upholstered with resp. light and greenish blue wool. Designed 1956. These examples manufactured 1956-1960s by cabinetmaker Thysen Nielsen, with maker's label. (3) *Model presented at The Copenhagen Cabinetmakers' Guild Exhibition at Designmuseum Danmark, 1956.*

*Literature: Grete Jalk [ed.]: "40 Years of Danish Furniture Design", vol. 3, pp. 388-389. *DKK 25,000-30,000 / € 3,350-4,050**



839



840

840
NIELS CLAUSEN

A pair of small teak chests of drawers. Front with each two drawers with later white/blue paint. These examples manufactured approx. 1960s by NC Møbler, Odense. H. 54 cm. W. 80 cm. D. 32 cm. (2)

DKK 20,000 / € 2,700



842

842
ARNE HOVMAND-OLSEN

b. 1919, d. 1989

Teak chest of drawers and sideboard, mounted on runner legs. Front with resp. three drawers and two doors. These examples made 1950-1960s by Kolds Savværk. H. 71 cm. L. 80/160 cm. D. 45 cm. (2)

DKK 25,000 / € 3,350



841

841
KURT ØSTERVIG

b. 1912, d. 1986

A sculptural solid teak daybed. Mattress up with light grey wool. Designed 1950s. This manufactured approx. 1950-1960s by Jason, H. 37/45 cm. L. 200 cm. W. 78 cm.

Literature: Mobilia, no. 35-33, June-July 1958.

DKK 40,00



843

843
POUL HENNINGSEN

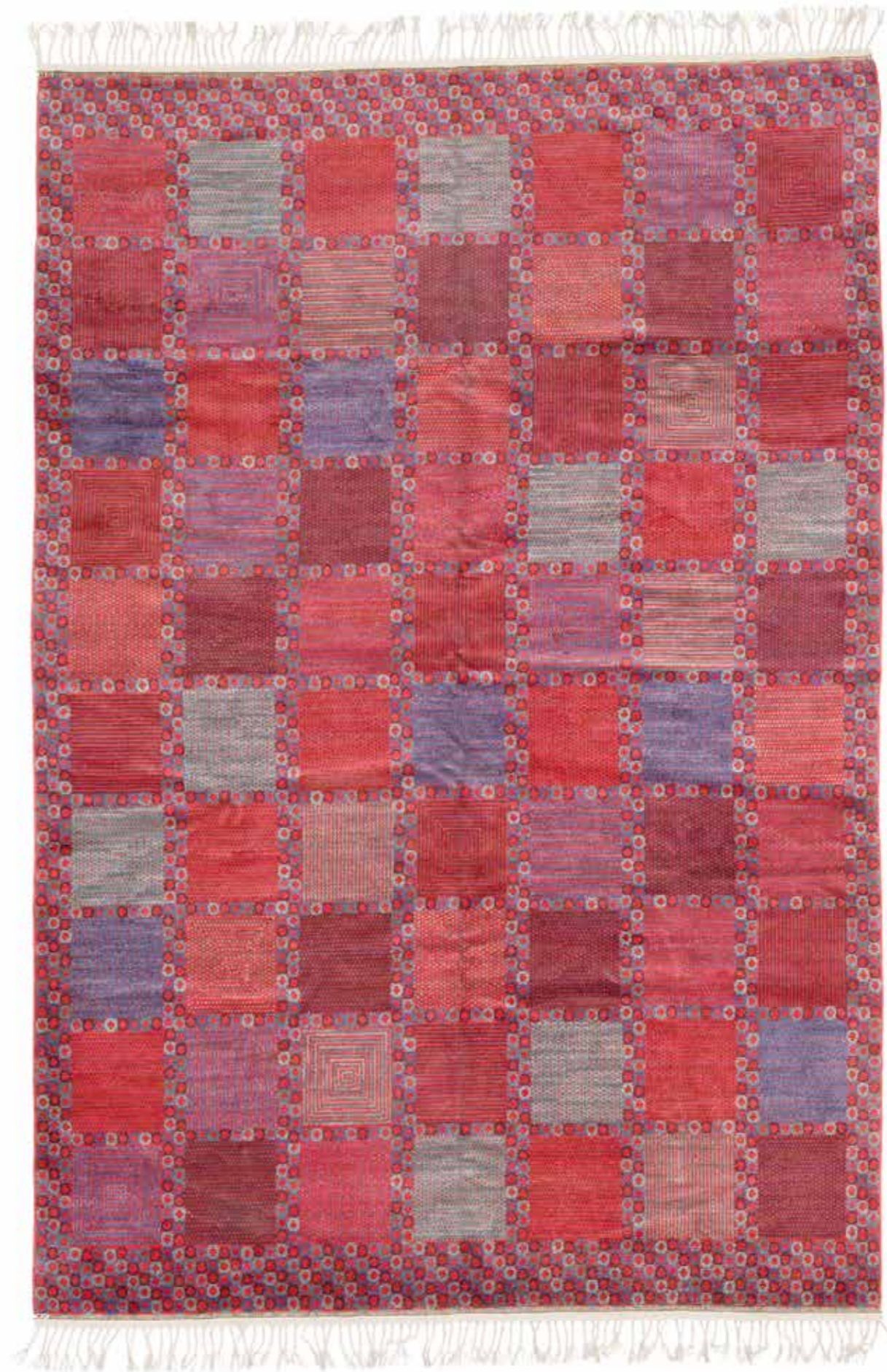
b. Ordrup 1894, d. Hillerød 1967

"PH-4/3". Patinated brass table lamp marked "PH-4, Patented". Red/gold lacquered original copper shades. This example manufactured early 1930s by Louis Poulsen. H. 53 cm. *DKK 60,000–80,000 / € 8,050–10,500*

844
BARBRO NILSSON

b. Malmö 1899, d. Höganäs 1983

"Rödingen". Handmade wool carpet in "knotted pile" technique. Geometric circle and square pattern in shades of red and violet. Signed BN and AB MMF. Designed 1954. This example made approx. 1960–1970s by AB Märta Måås-Fjetterström, Sweden. L. 362 cm. W. 242 cm. *DKK 250,000 / € 33,500*



844



845

845

KAARE KLINT

b. Frederiksberg 1888, d. Copenhagen 1954

"The Red Chair". Set of four stained beech chairs. Seat and back upholstered with Niger leather, fitted with brass nails. Model 4751. Designed 1933. These examples made 1940-1945 by Rud. Rasmussen Cabinetmakers, with maker's paper label. (4) DKK 35,000-40,000 / € 4,700-5,350



846

846

KAARE KLINT

b. Frederiksberg 1888, d. Copenhagen 1954

"The Red Chair". A pair of mahogany chairs with profiled frame. Seat and back upholstered with patinated Niger leather, fitted with brass nails. Model 3949. Designed 1928. These examples made approx. 1960s by Rud. Rasmussen Cabinetmakers, one with paper label. (2)

Literature: Gorm Harkær, Klintiana: "Kaare Klint", vol. 2, ill. and mentioned pp. 82-84.

DKK 25,000-30,000 / € 3,350-4,050

847

BARBRO NILSSON

b. Malmö 1899, d. Höganäs 1983

"Falurutan, blå". Handwoven wool runner in "rölakan" flatweave technique. Geometric pattern in blue and beige with yellow elements. Signed BN and AB MMF. Designed 1952. This example made second half of 20th century by AB Märta Måås-Fjetterström, Sweden. L. 361 cm. W. 109 cm.

Literature: Liljevalchs konsthalls catalogue: "Märta Måås-Fjetterström, Märta flyger igen, 90 år med Märta Måås-Fjetterström", Värnamo 2009, model ill. p. 153.

Literature: Tyra Lundgren: "Märta Måås-Fjetterström och väv-verkstaden i Båstad", Stockholm 1968, mentioned p. 115. DKK 100,000 / € 13,500



847



848

848
MOGENS KOCH

b. Frederiksberg 1898, d. Copenhagen 1992

Solid teak wardrobe with matching plinth. Front with two doors behind which brass coat hanger. This example made approx. 1970s by Rud. Rasmussen cabinetmakers, with maker's paper labels. H. 157 cm incl. plinth. W. 76 cm. D. 36 cm. (2)

Label no. 33??? and 35523 (cabinet label indistinctly numbered).

DKK 20,000-25,000 / € 2,700-3,350



849

849
POUL HENNINGSEN

b. Ordrup 1894, d. Hillerød 1967

"PH-3/2". Browned brass "Academy" wall lamp marked "Pat. Appl." Frosted glass shades. This example manufactured 1926-1928 by Louis Poulsen.

Literature: "Light Years Ahead", ill. pp. 154.

DKK 30,000-40,000 / € 4,050-5,350

850^{ARR}
ACTON BJØRN

b. København 1910, d. Charlottenlund 1992

Unique teak and pine work table. Made approx. 1940s, Denmark. H. 66.5 cm. L. 204 cm. W. 84 cm.

Provenance: Acton Bjørn. Hence by descent in the family.

DKK 20,000 / € 2,700



850



851
KAARE KLINT
b. Frederiksberg 1888, d. Copenhagen 1954

A pair of mahogany wingback chairs and matching pair of stools. Inside of back, sides and seat upholstered with blue/white checkered Cotil wool. Chair's exterior upholstered with blue Cotil wool. Model 6212. Designed 1941. These examples made 1960-1970s by Rud. Rasmussen Cabinetmakers. (4)
DKK 25,000-30,000 / € 3,350-4,050



851



852
VILHELM LAURITZEN
b. Slagelse 1894, d. Gentofte 1984

"Radiohus Record Player Lamp". A pair of very rare brass lamps with adjustable shades for horizontal mounting, power cord with switch marked "R.H." for Radio Huset. These examples manufactured 1930-1940s by Louis Poulsen. L. 68 cm. (2)
Provenance: Radiohuset, Copenhagen.

DKK 15,000-20,000 / € 2,000-2,700

853
KAARE KLINT
b. Frederiksberg 1888, d. Copenhagen 1954

"The Red Chair". A pair of Cuban mahogany chairs. Seat and back upholstered with patinated Niger leather, fitted with brass nails. Model 3758. Designed 1927. These examples made 1930s by Rud. Rasmussen cabinetmakers, with maker's paper label. (2)
Label no. 15419.

Literature: Gorm Harkær, Klintiana: "Kaare Klint", vol. 2, ill. and mentioned pp. 82-84. DKK 40,000 / € 5,350



853





854

854

DANISH CABINETMAKER

A pair of Cuban mahogany chairs. Seat and back upholstered with Niger leather, fitted with brass nails. Made 1925-1935, Denmark. (2)

Provenance: According to information from the seller, the chairs come from the seller's father, who was personal friends with cabinetmaker A.J. Iversen. The chairs are possibly made by him.

DKK 18,000-20,000 / € 2,400-2,700



855

DANISH CABINETMAKER

Cuban mahogany bench, seat upholstered with original, patinated Niger leather. Made 1925-1935, Denmark. H. 46 cm. L. 96 cm. W. 37 cm.

Provenance: According to information from the seller, the bench comes from the seller's father, who was personal friends with cabinetmaker A.J. Iversen. The bench is possibly made by him.

DKK 15,000 / € 2,000



855



856

856

KAARE KLINT

b. Frederiksberg 1888, d. Copenhagen 1954

A mahogany bergère with Brazilian rosewood inlays, brass "shoes" and castors. Sides, seat and back with woven cane. Loose cushions in seat and back upholstered with original patinated Niger leather. Model 4488. Designed 1931. This example made approx. 1930s by Rud. Rasmussen Cabinetmakers.

Literature: Gorm Harkær, Klintiana: "Kaare Klint", vol. 2, ill. and mentioned p. 86.

Literature: Grete Jalk [ed.]: "40 Years of Danish Furniture Design", vol. 4, ill. p. 214.

DKK 30,000-35,000 / € 4,050-4,700



857

KAARE KLINT

b. Frederiksberg 1888, d. Copenhagen 1954

"The Red Chair". Set of ten Cuban mahogany chairs with profiled frame. Seat and back upholstered with patinated Niger leather, fitted with brass nails. Model 3949. Designed 1928. These examples made early 1930s by Rud. Rasmussen Cabinetmakers, with maker's paper label. (10)

Label no. 11414.

Literature: Gorm Harkær, *Klinteriana: "Kaare Klint", vol. 2, ill. and mentioned pp. 82-84.* DKK 100,000-150,000 / € 13,500-20,000

857

858

FINN JUHL

b. Frederiksberg 1912, d. Ordrup 1989

"FJ 46". A solid walnut armchair with brass "shoes". Seat and back upholstered with patinated leather. Designed 1946. This example made approx. 1946 by cabinetmaker Niels Vodder, not stamped.

Provenance: Private Danish collection of chairs.

Provenance: Bing & Grøndahl's store, Amagertorv, Copenhagen.

Model presented at The Copenhagen Cabinetmakers' Guild Exhibition at Designmuseum Danmark, 1946.

Literature: Grete Jalk [ed.]: "40 Years of Danish Furniture Design", vol. 2, p. 320-321. DKK 75,000 / € 10,000



858

859

FINN JUHL

b. Frederiksberg 1912, d. Ordrup 1989

"FJ 45". A Brazilian rosewood easy chair. Sides, back and loose seat cushion upholstered with natural leather. Designed 1945. This example made approx. 1960s by cabinetmaker Niels Vodder, stamped by maker.

Provenance: Private Danish collection of chairs.

DKK 250,000-300,000 / € 33,500-40,500



859

INDEX

A

Aagaard Andersen, Gunnar 733

B

Bender Madsen, Aksel 705
706, 766, 768
Bernadotte, Sigvard 656, 764
Bernt 796
Bjørn, Acton 850
Bojesen, Kay 655
Brockmann-Petersen, H. 836

C

Carlander, Rakel 712
Clausen, Niels 840

D

Dangel, Carl 777
Danish cabinetmaker 771, 774, 785
798, 854, 855
Danish designer 790, 824, 882
Ditzel, Jørgen 819, 821, 822
Ditzel, Nanna 819, 820
821, 822, 823

E

Eiler Rasmussen, Steen 741
Ericson, Estrid 788

F

Fabricius, Preben 728
729, 809, 811
Faith-Ell, Age 780
Fisker, Kay 654

G

Gottlob, Kaj 683

H

Hansen Jr., Severin 838
Hansen, Erik Riisager 837
Hansen, Fritz 773
Hein, Piet 807
Henningsen, Poul 689, 700
714, 717, 730
735, 745, 757
765, 802, 804
831, 843, 849
Hovmand-Olsen, Arne 842
Høj, Jørgen 835

I

Iversen, Arne Wahl 839

J

Jacobsen, Arne 803, 806
Jensen, Georg 638, 639, 640, 641
645, 646, 647, 648
658, 659, 660, 661
662, 663, 664, 666
Johansson, Judith 746
Juhl, Finn 697, 698
699, 701, 703, 736
744, 747, 825, 826
827, 828, 829, 830
832, 833, 858, 859

K

Kastholm, Jørgen 728, 729, 809, 811
Kindt-Larsen, Edvard 704
767, 799, 800
Kindt-Larsen, Tove 704
767, 799, 800
Kjær, Bodil 812, 813, 814
Kjær, Jacob 792, 793
Kjærholm, Poul 722
723, 724, 725, 726
727, 748, 808, 810
Klint, Kaare 713
715, 716, 718, 719
720, 721, 845, 846
851, 853, 856, 857
Koch, Mogens 848
Kofod-Larsen, Ib 708, 742
Koppel, Henning 651, 652, 653
Kristiansen, Bo 669, 670, 671
Kåge, Wilhelm 673

L

Langkilde, Svend 740
Larsen, Ejner 705, 706, 766, 768
Lassen, Flemming 776
Lauritzen, Vilhelm 702, 852
Lindbom, Ann-Mari 795, 834
Lysberg, Hansen & Therp 709, 711

M

Mathsson, Bruno 787
Maurer, Ingo 778
Mogensen, Børge 694, 695, 762, 763
Måås-Fjetterstrøm, Märta 707
749, 775, 789, 794

N

Nielsen, Harald 649, 665
Nielsen, Jais 676
Nilsson, Barbro 692, 754
769, 786, 844, 847
Nordström, Gunvor 815
Norén, Svea 738

P

Pontoppidan, Ludvig 797

R

Reiff, Erik 781
Resell, Sigurd 743
Richter, Marianne 783
Rohde, Johan 642
643, 644, 657, 667

S

Salto, Axel 677, 678
679, 680, 681, 682
Scandinavian design 770
Schlechter, Ivan 731, 732
Siesbye, Alev Ebüzziya 668, 674, 675
Sjöqvist, Anna-Greta 772
Sjødahl Andersen, Manuel 650
Skogh, Svante 791
Still, Nanny 684
Suenson, Palle 750, 751, 752

T

Thommesen, Anna 761
Tynell, Paavo 784

U

Unknown designer 779

V

Vodder, Arne 734, 739

W

Wanscher, Ole 696, 801
Wegner, Hans J. 685, 686
687, 688, 690, 691
693, 737, 753, 755
756, 758, 759, 760
805, 816, 817, 818

Weiss, Per 672

Wiinblad, Bjørn 710

Ø

Østervig, Kurt 841

Bonhams|Cars

Formula 1® icon:
Kimi Räikkönen's famous McLaren Mercedes MP4/21
Estimate: US\$2.5–3.5 million

On The Grid Sale, 25 November, Abu Dhabi



Bonhams

Disse købsvilkår udgør Bruun Rasmussen Kunstauktioner A/S' ("BRK") købsvilkår for traditionelle auktioner og er gældende fra 1. februar 2017. BRK kan til enhver tid ændre købsvilkårene.

Ved bud accepterer budgiver/køber at være bundet af de til enhver tid gældende købsvilkår, som fremgår på bruun-rasmussen.dk. Købsvilkårene gælder både i forhold til erhvervsdrivende og forbrugere.

FØR AUKTIONEN

1 VURDERING AF GENSTANDE

1.1 Alle udbudte genstande er vurderet af BRK. Vurderingen er et skøn over det forventede hammerslag, jf. punkt 5.3. Vurderingen er baseret på tidligere salg af samme type genstande og erfaringer hos BRK. Hammerslag kan derfor falde højere eller lavere ud end vurderingen.

2 BESKRIVELSE AF GENSTANDE

2.1 Udbudte genstande præsenteres med fotos og beskrivelse i kataloger og på bruun-rasmussen.dk. Beskrivelsen foretages efter bedste overbevisning af BRK og ud fra en nøje undersøgelse efter den på salgstidspunktet herskende opfattelse blandt eksperter.

2.2 De udbudte genstande er af en alder og art, der bevirker, at de ofte er behæftede med slitage, mangler, beskadigelser og reparationer. Som udgangspunkt sælges alt som brugte genstande, og derfor indeholder beskrivelsen i kataloget og på bruun-rasmussen.dk ikke en redegørelse for ovenstående punkter eller genstandens stand.

2.3 I visse tilfælde vælger BRK at beskrive en genstands oprindelse. Det sker, hvis en tidligere ejer er offentlig kendt, og/eller hvis historien om et tidligere ejerskab belyser genstanden og dens art. Omvendt sker det også, at sådanne informationer udelades fra beskrivelsen, f.eks. for at imødekomme sælgers ønske om diskretion.

2.4 Vurderingen og beskrivelsen kan blive revideret forud for auktionen. Ændringer offentliggøres på bruun-rasmussen.dk

3 EFTERSYN

3.1 Udbudte genstande udstilles op til auktionen i et show-room hos BRK. Potentielle budgivere opfordres til at se genstanden efter i detaljer og har selv ansvaret for at forvise sig om dens stand på disse eftersyn, hvor der også er mulighed for at rådføre sig hos vurderingssagkyndige.

3.2 Hvis en potentiel køber ikke har mulighed for at besigtige genstanden ved selvsyn, kan der i de fleste tilfælde udfærdiges en konditionsrapport. Beskrivelsen heri er foretaget efter BRK's bedste overbevisning, men er ikke baseret på videnskabelige undersøgelser. En konditionsrapport tjener blot som identifikation og er ment som en hjælp til budgivere, der ikke selv har mulighed for at besigtige genstanden på eftersynet.

UNDER AUKTIONEN

4 BRK'S ROLLE

- 4.1 Salget af en genstand formidles af BRK på vegne af sælger. BRK afhænder altid udbudte genstande til den højst mulige pris under budgivningen.
- 4.2 Udbudte genstande kan have en med sælger aftalt mindstepris, hvorunder den ikke kan sælges. Denne pris er fortrolig.
- 4.3 De traditionelle auktioner overværes af en af Justitsministeriet beskikket auktionsleder, der sikrer, at auktionerne går retmæssigt for sig.

5 BUDGIVNING

- 5.1 Auktionerne afvikles i danske kroner. De tilnærmelsesvis beløb i euro/US dollar vil blive oplyst på skærme i auktionssalen og i øvrigt på opfordring.
- 5.2 Auktionarius bestemmer overbuds størrelse og i hvilket tempo, auktionen afvikles. Overbud stiger normalt med 5 % - 10 % i forhold til det foregående bud. Normalt sælges der 50-100 katalognumre i timen.
- 5.3 Hammerslag betegner både det forhold, at auktionarius slår med hammeren og derved markerer budgivningens afslutning, og den pris (budsum), den udbudte genstand sælges til. Se punkt 7 vedrørende beløb, der tillægges hammerslaget.
- 5.4 Køber er den budgiver, der opnår hammerslag. Ved hammerslaget indgås på baggrund af disse købsvilkår en bindende købs-/salgsaftale.
- 5.5 Bydes på andres vegne, hæfter budgiver som selvskyldnerkautionist for handlen.
- 5.6 Genstande købes som beset, og køber har uanset budtype ingen fortrydelsesret, heller ikke efter forbrugeraftaleloven.
- 5.7 Budgiver skal efter anvisninger fra BRK identificere sig og dokumentere sin betalingsdygtighed, f.eks. ved registrering af gyldigt betalings-/kreditkort, bankgaranti eller indbetaling af depositum.
- 5.8 BRK kan nægte at acceptere et bud, hvis en tilstrækkelig sikkerhed for betaling mangler, eller hvis budgiver tidligere har misligholdt betalingsforpligtigelser ved køb hos BRK.
- 5.9 Auktionslederen træffer i samråd med auktionarius afgørelse i alle tvivlstilfælde omkring budgivningen.

6 BUDTYPER

6.1 Der er følgende muligheder for at afgive bud:

PERSONLIGT FREMMØDE:

Registrering og udlevering af bydeskilt foregår ved indgangen til auktionssalen. Når budgiver ønsker at byde, signaleres dette til auktionarius ved at række bydeskiltet i vejret og tydeligt fremvise dets nummer.

KOMMISSIONSBUD:

Det ønskede maksimale bud kan afgives via bruun-rasmussen.dk frem til auktionens start eller pr. e-mail, fax eller telefon, så budet er modtaget senest 24 timer forud for auktionens start. En kommissionær byder på budgivers vegne inden for rammerne af det ønskede maksimalbud og vil altid afgive lavest muligt overbud.

TELEFONBUD:

I forhold til visse genstande er der mulighed for at blive ringet op af en medarbejder fra BRK, der vil byde på budgivers vegne under auktionen. Servicen kan bestilles via bruun-rasmussen.dk indtil tre timer før auktionens start.

LIVE BIDDING:

Det er muligt at følge auktionen live og byde med via bruun-rasmussen.dk

FORAUKTION:

Visse traditionelle auktioner indledes med en net-auktion. De højeste bud på net-auktionen danner udgangspunktet på den efterfølgende traditionelle auktion.

EFTER AUKTIONEN

7 BELØB, DER TILLÆGGES HAMMERSLAGET

- 7.1 I tillæg til hammerslaget, jf. punkt 5.3, skal køber for den enkelte genstand betale købersalær og, hvis betingelserne er opfyldt, de øvrige beløb, der er nærmere beskrevet nedenfor. Det samlede beløb, som køber skal betale til BRK, benævnes "købesummen".
 - 7.1.1 Købersalær: Hammerslaget tillægges et salær til BRK. På de traditionelle auktioner udgør salæret 25,6 % af hammerslaget + moms af salæret, i alt 32 %. For frimærker og mønter udgørsalæret 20 % af hammerslaget + moms af salæret, i alt 25 %.
 - 7.1.2 "LIVE bidding": BRK's "LIVE bidding"-software via bruun-rasmussen.dk er gratis at benytte for budgivere.
 - 7.1.3 Fuldmoms: Visse genstande handles efter de gældende regler om fuldmoms. Her beregnes der moms på 25 % af både hammerslag og salær. Disse genstande er i beskrivelsen i kataloget og på bruun-rasmussen.dk mærket med symbolet "*" eller med teksten: "Dette emne handles i fuldmoms".
 - 7.1.4 Kunstnerafgift: Ifølge dansk lovgivning om ophavsret skal der opkræves kunstnerafgift (følgeretsvederlag) for værker af nyere danske og visse udenlandske kunstnere, som enten er nulevende eller ikke har været døde i mere end 70 år. Kunstnerafgiften opkræves på vegne af VISDA. Disse værker er i kataloget mærket med "ARR" (Artist's Resale Right) og på bruun-rasmussen.dk med teksten "Dette emne er belagt med kunstnerafgift". Kunstnerafgiften tillægges hele hammerslaget + salær (ekskl. moms), når beløbet overstiger 300 euro, som angivet nedenfor:

Hammerslag + salær (ekskl. moms)	Betalingsssats
300,01 - 50.000 euro	5%
50.000,01 - 200.000 euro	3%
200.000,01 - 350.000 euro	1%
350.000,01 - 500.000 euro	0.5%
over 500.000 euro	0.25%

Kunstnerafgiften kan ikke overstige 12.500 euro (ekskl. moms) for den enkelte genstand. Afgiften skal betales i danske kroner, og omregningskursen (EUR/DKK) fastsættes af VISDA.

7.1.5 Betalings-/kreditkortgebyr: BRK forbeholder sig ret til at opkræve de af indløsningselskaberne pålagte betalings-/kreditkortgebyrer. Satserne fremgår ved budgivning via bruun-rasmussen.dk og ved betaling.

8 BETALINGSFRIST

8.1 Købesummen forfalder til betaling ved hammerslaget, og køber har herefter otte dage til at betale købesummen til BRK.

9 BETALINGSMÅDER

9.1 Betaling kan ske på følgende måder:

A: Med betalings-/kreditkort (Dankort, Visa, MasterCard, Maestro, Diners Club, JCB og China UnionPay) eller kontant (op til 19.999 kr.) i auktionssalen eller efterfølgende i en afdeling hos BRK. Bemærk, at vi ikke modtager 500-eurosedler.

B: Med betalings-/kreditkort (Dankort, Visa, MasterCard, Maestro, Diners Club og JCB) på bruun-rasmussen.dk under købers personlige side.

C: Via bankoverførsel til BRK's konto i Danske Bank: 4183 4310970638 · Swift/BIC: DABADKDK · IBAN: DK4130004310970638.

10 MOMSFRITAGELSE, -BETALING OG -DEPONERING

10.1 Visse købere kan vælge hvilken momstype, der skal være gældende for handlen. Valget skal meddeles BRK senest to hverdage efter købet og kan ikke omgøres.

A: Momsregistrerede virksomheder i Danmark kan vælge, at handlen skal ske efter reglerne om fuldmoms, jf. punkt 7.1.3.

B: Momsregistrerede virksomheder i et andet EU-land kan fritages for dansk moms, når det kan dokumenteres, at genstanden er transporteret til den udenlandske adresse, som køber har oplyst over for BRK, og som er anført på fakturaen. I sådanne tilfælde skal der afregnes moms efter de gældende regler i det land, hvor køber er momsregistreret. Det tilrådes at søge oplysning hos de lokale myndigheder. Køber kan undlade at gøre brug af muligheden for momsfrigtagelse og i stedet betale dansk brugtmoms/fuldmoms.

C: Købere med bopæl uden for EU kan fritages for dansk moms, når det kan dokumenteres, at genstanden er transporteret ud af EU. BRK udsteder så vidt muligt og mod gebyr de fornødne eksportpapirer, som skal fremvises ved toldmyndighederne. Køber kan undlade at gøre brug af muligheden for momsfrigtagelse og i stedet betale dansk brugtmoms/fuldmoms.

10.2 Momsregistrerede virksomheder i et andet EU-land og købere med bopæl uden for EU skal deponere den danske moms af fakturabeløbet hos BRK, indtil eksporten er gennemført på dokumenteret lovligt vis. Foretages eksporten af en af BRK godkendt speditor, skal momsens ikke deponeres. Se listen over godkendte speditorer på bruun-rasmussen.dk

11 OVERSKRIDELSE AF BETALINGSFRIST

11.1 Overskrides en betalingsfrist, herunder fristen i punkt 8, opkræves morarenter, som beregnes efter Nationalbankens officielle udlånsrente + 8 % om året af det skyldige beløb.

11.2 Betales købesummen inkl. renter ikke senest ti dage efter, at der er fremsat påkrav herom, er BRK berettiget til at søge købesummen betalt ved modregning i depositum/ved træk på bankgaranti eller at hæve købet.

11.3 Hæves købet, er BRK berettiget til at sælge genstanden på en ny auktion og kræve omkostningerne og en eventuel difference mellem hammerslag (samt salær), der er opnået på de to auktioner, betalt af den misligholdende køber.

11.4 Alle forfaldne krav (inkl. omkostninger), som ikke betaales rettidigt, kan BRK i tillæg til inkasso søge inddrevet på følgende måder:

A: For købers regning sælge genstande indleveret til auktion af eller på vegne af køber. Salget kan gennemføres uden hensyntagen til en aftalt mindstepris. Genstande indleveret til auktion kan ikke kræves udleveret, så længe forfalden gæld henstår ubetalt.

B: Inddrage købers tilgodehavende hos BRK, herunder tilgodehavende fra salg af genstande indleveret af eller på vegne af køber, uanset om et sådant tilgodehavende stammer fra auktionssalg, som ligger forud for eller efter tidspunktet for købers misligholdelse.

12 AFHENTNING OG UDLEVERING

- 12.1 Ejendomsretten til en købt genstand overgår til køber, når hele købesummen inkl. eventuelle renter og gebyrer er betalt, og først herefter kan udlevering af genstanden finde sted.
- 12.2 Ved udlevering af en købt genstand forbeholder BRK sig retten til at kræve tilfredsstillende dokumentation for, at den person, som ønsker genstanden udleveret, enten selv er køberen eller er bemyndiget af køberen til at få genstanden udleveret.
- 12.3 Udlevering af visse våben kræver forevisning af gyldig våbentilladelse. Sådant krav er angivet med teksten "Køb af dette emne kræver forevisning af gyldig våbentilladelse" i kataloget og på bruun-rasmussen.dk
- 12.4 Købte genstande henligger fra hammerslaget for købers regning og risiko. Afhentning skal ske senest otte hverdage efter sidste auktionsdag.
- 12.5 Foretages afhentningen ikke rettidigt, transporteres de købte genstande til et lager for købers regning og risiko. Transporten koster 150 kr. inkl. moms pr. genstand, og opbevaringen koster 150 kr. inkl. moms pr. genstand pr. påbegyndt uge. Henligger en genstand uafhængt i så lang tid, at lagerlejen overstiger genstandens værdi, er BRK berettiget til for købers regning og risiko og uden hensyn til mindstepris at bortauktionere genstanden eller sælge den underhånden. Køber hæfter til transport og lagerleje, der ikke dækkes ved sådant salg.
- 12.6 I henhold til gældende hvidvasklovgivning skal køber i visse tilfælde udlevere identitetsoplysninger og fremvise billed-id til BRK, før køber kan få den købte genstand i sin besiddelse

13 FORSENDELSE

- 13.1 Er køber forhindret i selv at afhente en genstand, tilbyder BRK for købers regning og risiko at emballere og arrangere forsendelse enten med post eller speditør. Se punkt 12.2 angående legitimation.

14 EKSPORTTILLADELSE

- 14.1 For at sikre at dansk kulturarv af afgørende betydning forbliver i Danmark, kan Kulturværtdiudvalget for visse genstandes vedkommende nedlægge eksportforbud. Hvis køber ønsker at eksportere en genstand ud af Danmark, hvor der er nedlagt et eksportforbud, annulleres købet, og Kulturværtdiudvalget er forpligtet til at overtage genstanden til den pris, der blev opnået på auktionen. Køber kan ikke rejse krav mod BRK som følge af, at et eksportforbud bliver nedlagt.
- 14.2 Visse genstande er omfattet af Washingtonkonventionen, også kendt som CITES, der har til formål at stoppe ulovlig handel med genstande fremstillet af udryddelsestruede vilde dyr og planter. Såfremt en genstand er omfattet af Washingtonkonventionen, CITES, liste 1, vil det fremgå af beskrivelsen på bruun-rasmussen.dk og være markeret med symbolet "©" i kataloget. Følgende regler gør sig gældende:
- A: Genstande omfattet af Washingtonkonventionen, CITES, liste 1, må kun handles, når der foreligger en dispensation i form af et såkaldt CITES-salgscertifikat. BRK indhenter det fornødne certifikat fra Naturstyrelsen, der tillader handel og eksport til lande inden for EU. Dog kan genstande, som er færdigforarbejdet før 1947, frit handles inden for EU uden et certifikat.
- B: Det er alene genstande omfattet af Washingtonkonventionen, CITES, liste 1, som er særkilt markeret på bruun-rasmussen.dk og i kataloget. Genstande omfattet af Washingtonkonventionen, CITES, liste 2, der frit kan sælges og transporteres inden for EU, er ikke særkilt markeret.
- C: Ved eksport til lande uden for EU skal der uanset årstallet for genstandens færdigforarbejdning altid indhentes en CITES-reeksporttilladelse fra Naturstyrelsen,

når genstanden er omfattet af Washingtonkonventionen, CITES, liste 1 og 2. Denne eksporttilladelse kan normalt indhentes problemfrit, når liste 1-genstande enten er solgt med et CITES-salgscertifikat eller er færdigforarbejdet før 1947. Liste 2-genstande opnår ligeledes normalt problemfrit en reeksporttilladelse. Eventuelle omkostninger, der opkræves af de danske myndigheder i forbindelse med udstedelse af en reeksporttilladelse, vil blive pålagt købers faktura.

D: I forbindelse med eksport til lande uden for EU kan særlige regler gøre sig gældende ifm. den efterfølgende import, og køber opfordres til at indhente oplysninger fra egne myndigheder.

15 MANGLER VED KØBTE GENSTANDE

- 15.1 Købelovens mangelsregler kan finde anvendelse. Nedenfor er angivet et ikke udtømmende uddrag af købers mangelsbeføjelser.
- 15.2 Køber er berettiget til at annullere et køb, hvis beskrivelsen har været behæftet med væsentlige fejl, der har ført til et højere hammerslag, end en korrekt beskrivelse ville have resulteret i. I sådanne tilfælde vil den samlede købesum blive refunderet. Køber kan ikke kræve betaling af renter af købesummen eller kræve dækning af anden udgift eller tab.
- 15.3 Et køb kan ikke annulleres, og køber kan ikke kræve købesummen refunderet eller rejse noget andet krav mod BRK, hvis beskrivelsen af genstanden er i overensstemmelse med punkt 2, eller hvis en påvisning af falskneri havde krævet brug af videnskabelige metoder, der enten ikke var tilgængelige på salgstidspunktet, havde været uforholdsmæssigt omkostningskrævende at anvende eller havde ført til beskadigelse af den pågældende genstand.
- 15.4 Krav om annullering af et køb skal meddeles BRK, når køber er blevet bekendt med det forhold, der berettiger køber til at annullere købet, dog senest to år fra den seneste afhentningsdato efter punkt 12.4. Den købte genstand skal returneres til BRK i samme stand som på hammerslagstidspunktet. Overholdes disse betingelser ikke, mister køber retten til at annullere købet og kan ikke kræve købesummen refunderet. Køber er selv ansvarlig for at betale de omkostninger, der er forbundet med returnering af genstanden.

16 INDSIGELSE- OG ANSVARSBEGRÆNSNING

- 16.1 BRK tager forbehold for fejl, tekniske vanskeligheder samt udefrakommende misbrug eller forstyrrende påvirkning under auktionen. Budgetgiver kan ikke rejse noget krav mod BRK som følge heraf.
- 16.2 Køber er i alle tilfælde selv ansvarlig for korrekt betaling af moms og andre afgifter, gebyrer mv. i overensstemmelse med danske og udenlandske regler.
- 16.3 Medmindre andet fremgår af disse købsvilkår, kan BRK aldrig blive ansvarlig for budgetgivers/købers driftstab, avancetab, andre indirekte tab eller følgeskader.

17 PERSONDATAPOLITIK

- 17.1 Det er vigtigt for BRK at sikre fortrolighed og sikkerhed omkring budgetgivers/købers personlige oplysninger. Persondatapolitikken fremgår af bruun-rasmussen.dk.

18 KLAGE, TVISTLØSNING OG LOVVALG

- 18.1 Har budgetgiver/køber en klage, kan der altid rettes henvendelse til BRK.
- 18.2 Lykkes det ikke at finde en løsning, kan forbrugere sende en klage til Nævnenes Hus, Toldboden 2, 8800 Viborg, e-mail: naevneneshus.dk. Forbrugere med bopæl i et andet EU-land end Danmark kan klage til EU-Kommissionens online klageportal via hjemmesiden: <http://ec.europa.eu/odr>.
- 18.3 Tvister skal indbringes i Danmark ved Københavns Byret, jf. dog punkt 18.2. I forbrugerforhold gælder de ufravigelige værnetingsregler.

Bruun Rasmussen Kunstauktioner

Rev. 06.23

CONDITIONS OF PURCHASE – LIVE AUCTIONS

These conditions of purchase represent Bruun Rasmussen Kunstauktioner A/S' ("BRK") conditions of purchase for live auctions and are effective from 1 January 2017. BRK may modify the conditions of purchase at any time.

By bidding, the bidder/buyer accepts the current conditions of purchase as they appear on bruun-rasmussen.dk. The conditions of purchase are applicable to both business owners and consumers.

BEFORE THE AUCTION

1 VALUATION OF ITEMS

- 1.1 All the offered items are valued by BRK. The valuation is an estimate based on the expected hammer price, see paragraph 5.3. The estimate is based on the previous sale of similar items as well as BRK's past experience. The hammer price can therefore be higher or lower than the estimated price.

2 DESCRIPTION OF ITEMS

- 2.1 Items up for auction are presented with photographs and descriptions in catalogues and on bruun-rasmussen.dk. The description is worded according to the best of BRK's knowledge and based on detailed research in accordance with the prevailing views among experts at the time of sale.
- 2.2 The items up for auction are of an age and nature that often mean that they are in a worn, repaired or damaged condition. As a starting point everything is sold as used items. For this reason, the descriptions in the catalogue or at bruun-rasmussen.dk do not include a statement regarding the above or the condition of the item.
- 2.3 In some cases, BRK may choose to describe an item's provenance. Such a description is made if a former owner is publicly known and/or if the story of previous ownership sheds further light on the item and its background. In other cases, such information is left out of the description, for instance to meet the seller's wish for privacy.
- 2.4 It is possible that the estimate and description are revised prior to the auction. Changes are published on BRK's website.

3 PREVIEW

- 3.1 Items up for auction are presented prior to the auction in one of BRK's showrooms. Potential bidders are encouraged to inspect the items closely and are responsible for determining the condition of the items at these previews, where they also have the opportunity to consult with the valuation experts.
- 3.2 If a potential buyer does not have the opportunity to inspect the item personally, a condition report can be drafted in most cases. The description in this report has been made according to BRK's honest conviction but is not based on scientific studies. A condition report only serves as an identification and is meant as an aid to bidders who do not have the opportunity to inspect the item at the preview.

DURING THE AUCTION

4 THE ROLE OF BRK

- 4.1 The sale of an item is facilitated by BRK on behalf of the seller, and BRK always sells items up for auction at the highest price offered during the bidding round.

- 4.2 Items up for auction can have a reserve price that has been agreed upon with the seller. The price is confidential and the item cannot be sold below this price.
- 4.3 The live auctions are presided over by one of the Danish Ministry of Justice's appointed auctioneers, ensuring that the auctions proceed correctly and lawfully.

5 BIDDING

- 5.1 The currency used while the auctions take place is Danish kroner. The approximate amount in euro/US dollars is shown on screens in the saleroom and also on request.
- 5.2 The auctioneer determines the size of the bid increment and the pace of the auction. Bid increments usually rise by 5% - 10% compared to the previous bid. Approximately 50-100 auction lots are sold per hour.
- 5.3 The hammer price refers both to the gavel used by the auctioneer that signifies the end of a bidding round on an item and to the price (bidding amount) that the item up for auction is sold for. See paragraph 7 regarding amounts added to the hammer price.
- 5.4 The buyer is the bidder that submits the highest bid, thereby obtaining the hammer price. At the moment the hammer price is determined, a binding purchase/sale agreement is entered into based on these conditions of purchase.
- 5.5 If bids are made on behalf of others, the bidder serves as surety for the transaction.
- 5.6 Items are purchased in their present state and condition, and regardless of the type of bidding the buyer has no right to cancel his purchase, neither under the Danish Consumer Contracts Act.
- 5.7 Bidders are required, in accordance with BRK's instructions, to identify themselves and document their ability to pay, for instance by registration of a valid debit/credit card, bank guarantee or a deposit.
- 5.8 BRK may refuse to accept a bid if a sufficient guarantee of the bidder's ability to pay is not provided, or if the bidder has previously defaulted on payment obligations on purchases from BRK.
- 5.9 The overseeing auctioneer will, in consultation with the auctioneer at the podium, decide what to do in matters of dispute concerning a bidding round.

6 TYPES OF BIDDING

- 6.1 Bidding options:
- IN PERSON:**
Registration and obtaining the bidding paddle take place at the entrance to the saleroom. When the bidder wishes to bid, it is signalled to the auctioneer on the podium by raising the bidding paddle in the air and clearly displaying its number.
- COMMISSION BIDS:**
The intended maximum bid can be submitted via bruun-rasmussen.dk until the start of the auction or by e-mail, fax or phone, so that the bid is received no later than 24 hours prior to the start of the auction. A commission agent bids on behalf of the bidder within the limits of the stated maximum bid. The commission agent will always bid the lowest possible amount to achieve the hammer price.

TELEPHONE BID:

With certain items it is possible to have a BRK employee call the bidder over the phone. The employee will then bid on behalf of the bidder during the auction. The service can be booked via bruun-rasmussen.dk up until three hours before the auction is set to begin.

LIVE BIDDING:

It is possible to follow the auction live and bid on the auction lots via bruun-rasmussen.dk.

PRE-AUCTION:

Some live auctions are preceded by an online auction. The highest bids from the online auction then represent the starting bids at the following live auction.

AFTER THE AUCTION

7 AMOUNTS ADDED TO THE HAMMER PRICE

- 7.1 In addition to the hammer price, see paragraph 5.3, the buyer pays a buyer's premium for the individual items as well as the other amounts described below if the conditions for these are applicable. The total amount that the buyer pays to BRK is called the "purchase price".
- 7.1.1 Buyer's Premium: The hammer price always includes an additional fee to BRK. At the live auctions, the fee is 25,6% of the hammer price + VAT of the fee, 32% in total. For stamps and coins, the fee is 20% of the hammer price + VAT of the fee, a total of 25%.
- 7.1.2 "LIVE Bidding": BRK's "LIVE Bidding" software is free to use for bidders on bruun-rasmussen.dk.
- 7.1.3 Full VAT: Certain items are sold at auction in accordance with the current rules regarding full VAT. In such a situation, a VAT of 25% is imposed on both the hammer price and the buyer's premium. These items are marked in the catalogue and on bruun-rasmussen.dk with the symbol "***", or with the text: "This item is subject to full VAT".
- 7.1.4 Artist's Resale Right: In accordance with Danish copyright law, a royalty fee covering the Artist's Resale Right has to be charged for works by newer Danish artists, and some foreign artists, who are either alive or have not been dead for more than 70 years. The royalty fee covering the Artist's Resale Right is charged on behalf of VISDA (Visual Rights Denmark). These works are marked "ARR" in the printed catalogue, and on bruun-rasmussen.dk the description of the works includes the text: "This lot is subject to the Artist's Resale Right". The royalty fee covering the Artist's Resale Right is added to the hammer price + the buyer's premium (excluding VAT) if the amount exceeds EUR 300, as indicated below:

Hammer price + buyer's premium (ex. VAT)	Payment Rate
300,01 - 50,000 euro	5%
50,000,01 - 200,000 euro	3%
200,000,01 - 350,000 euro	1%
350,000,01 - 500,000 euro	0.5%
over 500,000 euro	0.25%

The royalty fee covering the Artist's Resale Right cannot exceed EUR 12,500 (excluding VAT) for each item. The fee must be paid in Danish kroner, and the conversion rate (EUR/DKK) is set by VISDA.

- 7.1.5 Debit/Credit Card Fee: Amounts Added to the Hammer Price: BRK reserves the right to charge the debit/credit card fees imposed by the payment services companies. The rates will appear when bidding on bruun-rasmussen.dk and at payment.

8 PAYMENT DEADLINE

- 8.1 The purchase price falls due after the hammer price has been determined, and then the buyer has eight days to pay BRK the purchase price.

9 PAYMENT METHODS

- 9.1 The payment can be made in the following ways:
- A: With debit/credit card (Visa, MasterCard, Maestro, Diners Club, China UnionPay and JCB) or cash (up to DKK 19.999) in the saleroom or subsequently at one of

BRK's locations. Please note that we do not accept EUR 500 banknotes.

- B: With debit/credit card (Dankort, Visa, MasterCard, Diners Club and JCB) via BRK's website on the buyer's personal page.
- C: By bank transfer into BRK's account with Danske Bank: 4183 4310970638 · Swift/BIC: DABADKKK · IBAN: DK4130004310970638.

10 VAT EXEMPTION, PAYMENT & DEPOSIT

- 10.1 Some buyers can choose which type of VAT should apply to the transaction. The choice has to be communicated to BRK no later than two working days after the purchase and cannot be changed subsequently.
- A: Businesses in Denmark registered for VAT can decide that the transaction is to be conducted in accordance with the rules for full VAT, see paragraph 7.1.3.
- B: Businesses registered for VAT in another EU Member State can be exempted from paying Danish VAT if it can be proved that the item has been transported to the foreign address that the buyer has registered with BRK and which is written on the invoice. In such cases, the VAT should be settled according to the rules applicable in the country where the buyer is registered for VAT. It is advisable to consult with the local authorities. The buyer can decide not to be exempt from regular VAT and instead pay Danish VAT on second-hand goods/full VAT.
- C: Buyers residing outside the EU can be exempted from Danish VAT if it can be proved that the item has been transported out of the EU. To the extent possible and for a fee, BRK can issue the necessary export documents for the customs authorities. The buyer may decide not to be exempt from regular VAT and instead pay Danish VAT on second-hand goods/full VAT.
- 10.2 Companies registered for VAT in another EU Member State and buyers residing outside the EU must deposit the Danish VAT on the amount invoiced with BRK until the export process has been completed in a documented, lawful fashion. If the export is undertaken by one of BRK's authorized forwarding agents, the VAT does not have to be deposited. See the list of authorized forwarding agents on bruun-rasmussen.dk.

11 OVERDUE PAYMENTS

- 11.1 If payment is made after a deadline, including the deadline specified in paragraph 8, interest on overdue payments will be charged and estimated in accordance with the Danish Central Bank's official lending rate + 8% per year on the amount due.
- 11.2 If the purchase price, including interest, has still not been paid ten days after the demand for payment has been made, BRK is entitled to seek the purchase price paid by making a set-off against the deposit/by drawing on the bank guarantee or to cancel the purchase.
- 11.3 If the purchase is cancelled, BRK is entitled to sell the item at a new auction and demand the costs and any difference between the new and the earlier hammer price (including the buyer's premium) covered by the defaulting buyer.
- 11.4 In addition to debt collection, BRK may seek recovery of all due claims (including costs) not paid in a timely manner in the following ways:
- A: Making the buyer cover the costs of selling items consigned to auction by or on behalf of the buyer. The sale can be conducted without regard to an agreed reserve price. Items consigned for auction cannot be collected as long as overdue debts are unpaid.
- B: Seizing the buyer's remaining balance with BRK, including the balance from the sale of items consigned by or on behalf of the buyer, regardless of whether such receivables derive from auction sales prior to or after the date of the buyer's default on the payment.

12 PICK-UP & COLLECTION

- 12.1 The title to a purchased item passes to the buyer when the full purchase price, including any interest and fees, has been paid, and only then can the collection of an item take place.
- 12.2 In connection with the collection of a purchased item, BRK reserves the right to demand satisfactory documentation that the person who wants to pick up the item is either the buyer himself/herself or authorized by the buyer to receive the item on his/her behalf.
- 12.3 The collection of certain weapons requires presentation of a valid weapons certificate. Items with such requirements are listed with the text: "The purchase of this item requires the presentation of a valid weapons certificate" in the catalogue and on bruun-rasmussen.dk.
- 12.4 Purchased items are stored after the auction at the buyer's expense and risk. Pick-up must take place no later than eight working days after the last auction day.
- 12.5 If the item(s) is/are not picked up on time, the purchased items will be transported to a warehouse at the buyer's risk and expense. The transport costs are DKK 150 including VAT per item and the storage costs are DKK 150 including VAT per item for each week or part of a week. If an item is left unclaimed for an amount of time that results in the storage costs exceeding the value of the item, BRK will be entitled to, at the buyer's expense and risk and without regard to the reserve price, sell the item at an auction or privately. The buyer is still liable for the costs of transportation and storage not covered by such sale.
- 12.6 In accordance with current anti-money laundering laws, the buyer must in certain cases submit personal information and present a photo ID to BRK before the buyer can have the purchased item placed in his possession.

13 SHIPPING

- 13.1 If the buyer is unable to pick up the purchased item, BRK offers to pack and arrange delivery either by mail or by freight forwarder at the buyer's risk and expense. See paragraph 12.2 regarding identification.

14 EXPORT LICENSE

- 14.1 To ensure that Danish cultural heritage of vital importance remains in Denmark, the Danish Cultural Assets Commission can place an export ban on certain items. If the buyer wishes to export an item that is subject to an export ban in Denmark, the purchase will be cancelled and the Danish Cultural Assets Commission is obliged to acquire ownership of the item for the price obtained at auction. The buyer cannot raise any claims against BRK as a result of an export ban.
- 14.2 Certain items are included in the Washington Convention, also known as CITES. The purpose of CITES is to stop the trade of items made with endangered species and flora. If the item is included in the Washington Convention, CITES, Appendix 1, this will appear in the description of the item on bruun-rasmussen.dk and be marked with the symbol "☉" in the catalogue. The following rules are applicable:
- A: Items that are included in the Washington Convention, CITES, Appendix 1, can only be traded when a dispensation in the form of a CITES certificate has been obtained. BRK obtains the required certificate from the Danish Nature Agency that allows trade and export to countries within the EU. Items that were produced before 1947 can, however, be freely traded within the EU without a certificate.
- B: It is only items included in the Washington Convention, CITES, Appendix 1 that are marked individually on bruun-rasmussen.dk and in our catalogue. Items included in the Washington Convention, CITES, Appendix 2, which can be freely sold and transported within the EU, are not individually marked.
- C: Export to countries outside the EU must, regardless of the year of the item's production, always procure a CITES re-export permit from the Danish Nature Agency if the item is included in the Washington Convention, Appendix 1 and 2. This export permit can usually be

obtained without problems, if the item is either sold with a CITES certificate or was made prior to 1947. Appendix 2 items usually also receive a re-export permit without problems. Any fees charged by the Danish authorities in connection with the issuance of a re-export permit will be added to the buyer's invoice.

D: In connection with export to other countries outside the EU, special rules may apply concerning the subsequent import, and the buyer is encouraged to consult the relevant local authorities about this issue.

15 DEFECTS IN THE PURCHASED ITEMS

- 15.1 The lack of conformity rules of the Danish Sale of Goods Act may apply. Below is a non-exhaustive excerpt of the buyer's remedies in regard to lack of conformity.
- 15.2 The buyer is entitled to cancel a purchase if the description contained significant errors that have led to a higher hammer price than a correct description would have resulted in. In such cases, the total purchase price will be refunded. The buyer cannot demand payment of interest on the purchase price or demand payment of any other expenses or losses.
- 15.3 A purchase cannot be cancelled and the buyer cannot demand a refund of the purchase price or raise any other claims against BRK if the description of the item is in compliance with paragraph 15.2. The same applies if evidence of forgery has required the use of scientific methods that were either not available at the time of sale, were excessively costly to use or led to the damage of the item in question.
- 15.4 Claims for a cancellation of a purchase must be notified to BRK when the buyer has discovered the fact that entitles the buyer to cancel the purchase. This notice, however, has to be given no later than two years after the final pick-up date according to paragraph 12.4. The item purchased must be returned to BRK in the same condition as it was on the day it was sold at auction. If these conditions are not met, the buyer loses the right to cancel the purchase and cannot claim a refund of the purchase price. The buyer is responsible for paying the costs associated with the return of the item.

16 OBJECTIONS & LIMITATIONS OF LIABILITY

- 16.1 BRK is aware that errors, technical difficulties and external abuse or disruptive influences may occur during the auction. Bidders cannot raise any claims against BRK as a result of such events.
- 16.2 The buyer is always responsible for the correct payment of VAT and other costs, fees etc. in accordance with Danish and foreign regulations.
- 16.3 Unless otherwise stated in these conditions of purchase, BRK may never be held liable for bidders'/buyers' operating loss, loss of profits, other indirect losses or consequential loss.

17 PRIVACY POLICY

- 17.1 It is important to BRK to ensure confidentiality and security regarding the bidder's/buyer's personal information. The privacy policy can be found on bruun-rasmussen.dk.

18 COMPLAINTS, DISPUTE RESOLUTION AND APPLICABLE LAW

- 18.1 BRK can always be contacted if the bidder/buyer has a complaint.
- 18.2 If the dispute cannot be resolved, the consumer can submit a complaint to the Complaint Resolution Centre, Nævnenes Hus, Toldboden 2, 8800 Viborg, Denmark, email: naevne-neshus.dk. Consumers residing in another EU country than Denmark can submit their complaint to the European Commission's Online Dispute Resolution platform via the website: <http://ec.europa.eu/odr>.
- 18.3 In Denmark, disputes must be brought before the City Court of Copenhagen, but see paragraphs 18.2. The mandatory rules on jurisdiction apply to consumer interests.

Bruun Rasmussen Auctioneers

The above is an English translation of the Danish version of the Conditions of Purchase. In case of a dispute, only the Danish version of the present Conditions of Purchase of Bruun Rasmussen is valid.

COMMISSION BIDS

KOMMISSIONSBUD

It is possible to leave commission bids if you can not be present at the auction yourself. This service is free of charge.

When leaving a commission bid, you are instructing our customer service to bid up to a specified amount on your behalf.

The situation can occur that another buyer has already bid the same as you were prepared to. Are you then willing to bid further? If not the lot will be sold to another buyer.

If you do not wish to exceed your bid then write "Max", for maximum, next to the amount. You can also allow us to raise your bid by approx. 15% or approx. 25%.

The hammer price may be higher or lower than the estimated price, so it is possible to buy below the estimate. Bruun Rasmussen will always buy at the lowest price possible, as if you yourself had been present at the auction.

All commission bids are strictly confidential.

Commission bids must be submitted no later than **24 hours** prior to the start of the auction.

HOW TO MAKE A COMMISSION BID:

Complete the commission form with all pertinent information.

Indicate the lot number.

Indicate the amount you are prepared to bid.

Should this amount be the absolute maximum, please write "Max" in the appropriate column.

You can also allow us to bid by up to approx. 15% or approx. 25% more by indicating so.

Sign the commission form and make sure that Bruun Rasmussen receives it **24 hours** prior to the start of the auction.

If the information should be insufficient, Bruun Rasmussen can abstain from bidding. Bruun Rasmussen can not be held responsible for error in bidding or failure to execute bids.

INTERNET:

Commission bids can be submitted via website bruun-rasmussen.dk directly from the page with the item you want to submit a bid for.

Deadline for submissions of bids via the website is **3 hours** prior to the start of the auction.

Submitted bids are shown under "Your bids" when you are logged in. Please contact technical support on +45 8818 1114 for questions about the registration and submission of bids on the website.

For additional information, please consult "Conditions of Purchase" §1.

TELEPHONE BIDDING:

Should you wish to bid at auction by telephone, please inform Bruun Rasmussen of your name and telephone number, as well as which catalogue numbers you are interested in, no later than **3 hours** prior to the start of the auction. You will then be contacted shortly before the relevant lot comes under the hammer, thereby allowing you to participate without being in the auction room yourself.

For additional information, please consult "Conditions of Purchase" §1.

Det er muligt at afgive kommissionsbud, hvis De ikke selv kan være til stede på auktionens dag. Denne service er gratis.

Når De afgiver en kommission, beder De vores kundeservice på Deres vegne byde op til et af Dem bestemt beløb i hammerslag.

Der kan opstå den situation, at en anden køber allerede har budt det beløb, som De ønsker at afgive. Er De da villig til at gå et bud højere eller er De indforstået med at nummeret sælges til anden side?

Ønsker De ikke at byde højere så skriv "Max" ud for beløbet. Er De i tvivl om hvor højt De vil byde, kan De hæve budet med op til ca. 15% eller ca. 25%.

Salgsprisen kan blive højere eller lavere end vurderingen, så der er også mulighed for at købe til under den angivne vurdering. Vor kundeservice køber altid så billigt som muligt til Dem, som havde De selv været tilstede på auktionen.

Alle kommissioner behandles strengt fortroligt.

Kommissionsbud skal være Bruun Rasmussen i hænde senest **24 timer** før auktionens start.

SÅDAN BYDER DE:

Udfyld blanketten kommissionsbud med alle oplysninger.

Angiv katalognummer.

Angiv beløbet De ønsker at byde.

Er dette Deres absolutte maximum bedes De anføre "Max" i kolonnen.

De kan også forhøje Deres bud med henholdsvis ca. 15% eller ca. 25%, ved at indikere dette i kolonnen.

De bedes underskrive kommissionsblanketten og sikre Dem, at Bruun Rasmussen modtager den senest **24 timer** før auktionens start.

Hvis Deres oplysninger ikke er tilstrækkelige, kan Bruun Rasmussen undlade at byde for Dem, ligesom Bruun Rasmussen ikke kan gøres ansvarlig for fejl ved budgivning.

INTERNET:

Kommissionsbud kan afgives på hjemmesiden bruun-rasmussen.dk direkte fra siden med den effekt, De ønsker at byde på.

Seneste afgivelse af bud via hjemmesiden er **3 timer** før auktionens start.

Afgivne bud kan ses på hjemmesiden under "Deres bud", når de er logget ind. Kontakt teknisk support på 8818 1114 for spørgsmål om registrering og budgivning via internettet.

For yderligere information, se "Købskonditioner", §1.

TELEFONBUD:

Såfremt De ønsker at byde pr. telefon, bedes De oplyse Bruun Rasmussen Deres navn og telefonnummer samt hvilke katalognumre, De ønsker at byde på, senest **3 timer** før auktionens start. De vil så blive ringet op kort før, den aktuelle vare kommer under hammeren, og De kan på denne måde deltage i auktionen uden selv at være til stede.

For yderligere information, se "Købskonditioner" på bruun-rasmussen.dk under "Guide".

COMMISSION BIDS

KOMMISSIONSBUD

BREDGADE

Skal være Bruun Rasmussen i hænde senest **24 timer** før auktionens start.

Must be submitted no later than 24 hours prior to the start of the auction.

AUKTION NR AUCTION NO: **915**

Navn Name: *

Adresse Address: *

Postnr./by City: *

Land Country: * Fax:

Tel: *

e-mail: CVR-nr. VAT No.:

Bank: Konto nr. Acct. No.:

Adresse Address:

Postnr./By City: Land Country:

Tel: Kontaktperson Contact:

Obligatoriske felter er mærket med en stjerne * *Mandatory fields are marked with an asterisk **

Undertegnede giver hermed fuldmagt til Bruun Rasmussen Kunstauktioner A/S om på mine vegne at købe nedennævnte katalognumre så fordelagtigt som muligt, inden for det af mig anførte beløb, i hammerslag. *I hereby request that Bruun Rasmussen bid on my behalf on the following lots up at the prices indicated below.*

Undertegnede har udfyldt ovennævnte med de ønskede oplysninger, samt har accepteret købskonditionerne. *The undersigned has supplied the required information and agrees to be bound by the conditions of purchase.*

Signatur: * B.R. kunde-nr. Client No.:

Jeg ønsker at modtage salgsresultater på de emner jeg har budt på via email dagligt efter auktion
 I wish to receive sales results on the items I have been bidding on via e-mail *every day* *after the auction*

på e-mail adressen *on this e-mail address:*

Katalog nr. Lot. No.	Beskrivelse Description	Bud kr. Bid DKK	Max	+15%	+25%

BRUUN RASMUSSEN KUNSTAUKTIONER A/S

Bredgade 33 · DK-1260 København K · Tel +45 8818 1111 · Fax +45 8818 1112 · bids@bruun-rasmussen.dk · bruun-rasmussen.dk

Fortsættes næste side *Please turn over*

Ret til ændringer forbeholdes © 2023 Bruun Rasmussen Kunstauktioner
Foto: Bent Lange, Henrik Wichmann & Peter Madsen · Tryk: Cool Gray
Grafik og dtp: Jorge Figueiredo & Bettina Stefansen



 DESIGN

